


Product datasheet

Anti-ALDH1L1 antibody - Astrocyte Marker ab190298

★★★★★ [1 Abreviews](#) [14 References](#) [2 Images](#)

Overview

Product name	Anti-ALDH1L1 antibody - Astrocyte Marker
Description	Rabbit polyclonal to ALDH1L1 - Astrocyte Marker
Host species	Rabbit
Tested applications	Suitable for: WB, ICC/IF
Species reactivity	Reacts with: Rat, Human Predicted to work with: Orangutan 
Immunogen	Recombinant full length protein corresponding to Human ALDH1L1 aa 1 to the C-terminus. Immunogen expressed and purified from E. coli. Database link: O75891

 [Run BLAST with](#)

 [Run BLAST with](#)

General notes

The Life Science industry has been in the grips of a reproducibility crisis for a number of years. Abcam is leading the way in addressing this with our range of recombinant monoclonal antibodies and knockout edited cell lines for gold-standard validation. Please check that this product meets your needs before purchasing.

If you have any questions, special requirements or concerns, please send us an inquiry and/or contact our Support team ahead of purchase. Recommended alternatives for this product can be found below, along with publications, customer reviews and Q&As

Properties

Form	Liquid
Storage instructions	Shipped at 4°C. Store at +4°C short term (1-2 weeks). Upon delivery aliquot. Store at -20°C long term. Avoid freeze / thaw cycle.
Storage buffer	Preservative: 0.03% Sodium azide
Purity	Whole antiserum
Clonality	Polyclonal
Isotype	IgG

Applications

The Abpromise guarantee

Our **Abpromise guarantee** covers the use of ab190298 in the following tested applications.

The application notes include recommended starting dilutions; optimal dilutions/concentrations should be determined by the end user.

Application	Abreviews	Notes
WB	★★★★★ (1)	1/5000 - 1/10000. Predicted molecular weight: 99 kDa.
ICC/IF		1/2000.

Target

Tissue specificity

Highly expressed in liver, pancreas and kidney.

Sequence similarities

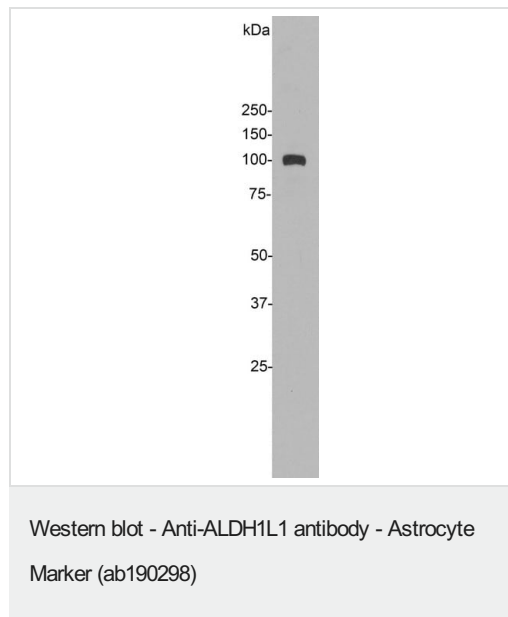
In the N-terminal section; belongs to the GART family.

In the C-terminal section; belongs to the aldehyde dehydrogenase family. ALDH1L subfamily.
Contains 1 acyl carrier domain.

Cellular localization

Cytoplasm.

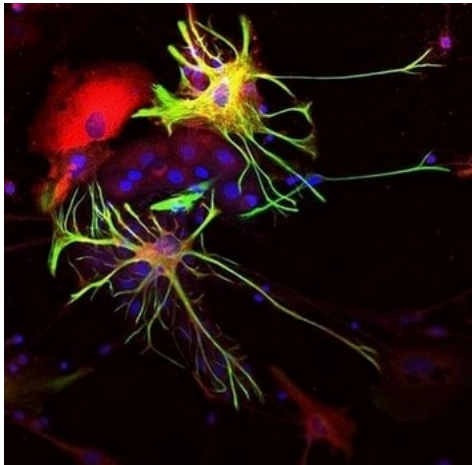
Images



Anti-ALDH1L1 antibody - Astrocyte Marker (ab190298) at 1/5000 dilution + Rat liver tissue homogenate

Predicted band size: 99 kDa

Observed band size: ~100 kDa



Immunocytochemistry/ Immunofluorescence - Anti-ALDH1L1 antibody - Astrocyte Marker (ab190298)

Immunofluorescent analysis of human neuron-glia cell mixture cultures labeling ALDH1L1 with ab190298 at 1/2000 (red) and a monoclonal antibody against GFAP (green). Blue is a DNA stain. Astrocytes labeled by ab190298 and anti-GFAP appear yellow.

Please note: All products are "FOR RESEARCH USE ONLY. NOT FOR USE IN DIAGNOSTIC PROCEDURES"

Our Abpromise to you: Quality guaranteed and expert technical support

- Replacement or refund for products not performing as stated on the datasheet
- Valid for 12 months from date of delivery
- Response to your inquiry within 24 hours
- We provide support in Chinese, English, French, German, Japanese and Spanish
- Extensive multi-media technical resources to help you
- We investigate all quality concerns to ensure our products perform to the highest standards

If the product does not perform as described on this datasheet, we will offer a refund or replacement. For full details of the Abpromise, please visit <https://www.abcam.com/abpromise> or contact our technical team.

Terms and conditions

- Guarantee only valid for products bought direct from Abcam or one of our authorized distributors