


### Anti-ALDH1L2 antibody ab113496

[3 References](#) [2 Images](#)

#### Overview

<b>Product name</b>	Anti-ALDH1L2 antibody
<b>Description</b>	Rabbit polyclonal to ALDH1L2
<b>Host species</b>	Rabbit
<b>Tested applications</b>	<b>Suitable for:</b> WB, IHC-P
<b>Species reactivity</b>	<b>Reacts with:</b> Human <b>Predicted to work with:</b> Mouse, Rat 
<b>Immunogen</b>	Recombinant fragment, corresponding to amino acids 2-247 of Human ALDH1L2 (BC103935).
<b>Positive control</b>	Human Fetal Kidney, Human Fetal Heart, and Human Fetal Liver lysates, Human Fetal Heart tissue
<b>General notes</b>	<p>The Life Science industry has been in the grips of a reproducibility crisis for a number of years. Abcam is leading the way in addressing this with our range of recombinant monoclonal antibodies and knockout edited cell lines for gold-standard validation. Please check that this product meets your needs before purchasing.</p> <p>If you have any questions, special requirements or concerns, please send us an inquiry and/or contact our Support team ahead of purchase. Recommended alternatives for this product can be found below, along with publications, customer reviews and Q&amp;As</p>

#### Properties

<b>Form</b>	Lyophilized:Reconstitute in 200ul sterile H2O.
<b>Storage instructions</b>	Shipped at 4°C. Upon delivery aliquot and store at -20°C. Avoid repeated freeze / thaw cycles.
<b>Storage buffer</b>	pH: 7.20 Preservative: 0.02% Sodium azide Constituent: 1% BSA
<b>Purity</b>	Immunogen affinity purified
<b>Clonality</b>	Polyclonal
<b>Isotype</b>	IgG

#### Applications

## The Abpromise guarantee

Our **Abpromise guarantee** covers the use of ab113496 in the following tested applications.

The application notes include recommended starting dilutions; optimal dilutions/concentrations should be determined by the end user.

Application	Abreviews	Notes
WB		1/1000 - 1/2000. Predicted molecular weight: 102 kDa.
IHC-P		1/100 - 1/500.

## Target

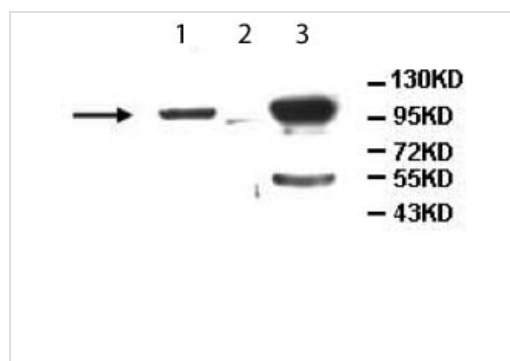
### Sequence similarities

In the N-terminal section; belongs to the GART family.

In the C-terminal section; belongs to the aldehyde dehydrogenase family. ALDH1L subfamily.

Contains 1 acyl carrier domain.

## Images



Western blot - Anti-ALDH1L2 antibody (ab113496)

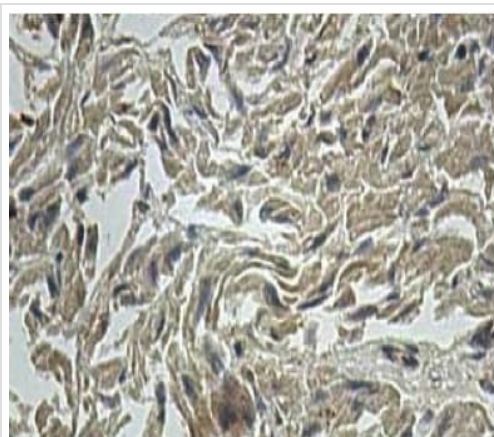
**All lanes :** Anti-ALDH1L2 antibody (ab113496) at 1/1000 dilution

**Lane 1 :** Human Fetal Kidney Lysate

**Lane 2 :** Human Fetal Heart Lysate

**Lane 3 :** Human Fetal Liver Lysate

**Predicted band size:** 102 kDa



Immunohistochemistry (Formalin/PFA-fixed paraffin-embedded sections) - Anti-ALDH1L2 antibody (ab113496)

Staining of Human ALDH1L2 in a Formalin/PFA-fixed paraffin-embedded section of Human Fetal Heart using ab113496 at a dilution of 1/100.

### **Our Abpromise to you: Quality guaranteed and expert technical support**

---

- Replacement or refund for products not performing as stated on the datasheet
- Valid for 12 months from date of delivery
- Response to your inquiry within 24 hours
- We provide support in Chinese, English, French, German, Japanese and Spanish
- Extensive multi-media technical resources to help you
- We investigate all quality concerns to ensure our products perform to the highest standards

If the product does not perform as described on this datasheet, we will offer a refund or replacement. For full details of the Abpromise, please visit <https://www.abcam.com/abpromise> or contact our technical team.

### **Terms and conditions**

---

- Guarantee only valid for products bought direct from Abcam or one of our authorized distributors