




Product datasheet

Anti-ALDH2 antibody ab194587

[2 References](#) [4 Images](#)

Overview

| | |
|----------------------------|---|
| Product name | Anti-ALDH2 antibody |
| Description | Rabbit polyclonal to ALDH2 |
| Host species | Rabbit |
| Tested applications | Suitable for: IHC-P, WB |
| Species reactivity | Reacts with: Mouse, Rat, Human Predicted to work with: Horse, Cow, Pig, Orangutan  |
| Immunogen | Recombinant fragment corresponding to Human ALDH2 aa 1-400. Database link: P05091 <div>  Run BLAST with  Run BLAST with </div> |
| Positive control | Extracts of rat liver and mouse lung cell lines; Mouse esophagus tissue; Human stomach tissue; Human lung cancer tissue. |
| General notes | <p>The Life Science industry has been in the grips of a reproducibility crisis for a number of years. Abcam is leading the way in addressing this with our range of recombinant monoclonal antibodies and knockout edited cell lines for gold-standard validation. Please check that this product meets your needs before purchasing.</p> <p>If you have any questions, special requirements or concerns, please send us an inquiry and/or contact our Support team ahead of purchase. Recommended alternatives for this product can be found below, along with publications, customer reviews and Q&As</p> |

Properties

| | |
|-----------------------------|---|
| Form | Liquid |
| Storage instructions | Shipped at 4°C. Store at +4°C short term (1-2 weeks). Upon delivery aliquot. Store at -20°C long term. Avoid freeze / thaw cycle. |
| Storage buffer | pH: 7.30 Preservative: 0.02% Sodium azide Constituents: 49% PBS, 50% Glycerol |
| Purity | Immunogen affinity purified |
| Clonality | Polyclonal |
| Isotype | IgG |

Applications

The Abpromise guarantee

Our **Abpromise guarantee** covers the use of ab194587 in the following tested applications.

The application notes include recommended starting dilutions; optimal dilutions/concentrations should be determined by the end user.

| Application | Abreviews | Notes |
|-------------|-----------|---|
| IHC-P | | 1/50 - 1/200. ab171870 - Rabbit polyclonal IgG, is suitable for use as an isotype control with this antibody. |
| WB | | 1/500 - 1/2000. Predicted molecular weight: 56 kDa. |

Target

Pathway

Alcohol metabolism; ethanol degradation; acetate from ethanol: step 2/2.

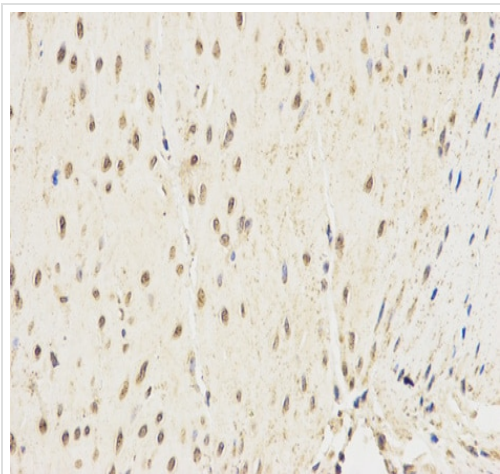
Sequence similarities

Belongs to the aldehyde dehydrogenase family.

Cellular localization

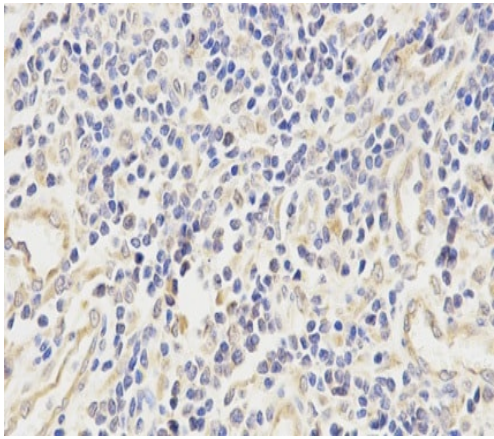
Mitochondrion matrix.

Images



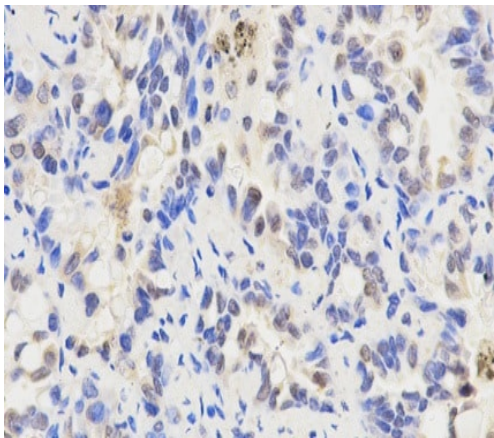
Immunohistochemical analysis of paraffin embedded Mouse esophagus tissue labeling ALDH2 with ab194587 at 1/200 dilution.

Immunohistochemistry (Formalin/PFA-fixed paraffin-embedded sections) - Anti-ALDH2 antibody (ab194587)



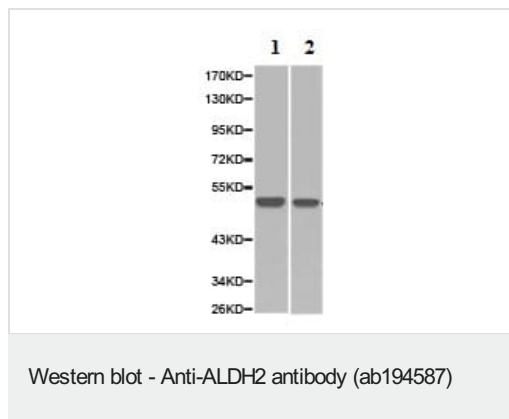
Immunohistochemistry analysis of paraffin embedded Human stomach tissue labeling ALDH2 with ab194587 at 1/200 dilution.

Immunohistochemistry (Formalin/PFA-fixed paraffin-embedded sections) - Anti-ALDH2 antibody (ab194587)



Immunohistochemistry analysis of Human lung cancer tissue labeling ALDH2 with ab194587 at 1/200 dilution.

Immunohistochemistry (Formalin/PFA-fixed paraffin-embedded sections) - Anti-ALDH2 antibody (ab194587)



All lanes : Anti-ALDH2 antibody (ab194587) at 1/500 dilution

Lane 1 : Extract of rat liver cell line

Lane 2 : Extract of mouse lung cell line

Predicted band size: 56 kDa

Please note: All products are "FOR RESEARCH USE ONLY. NOT FOR USE IN DIAGNOSTIC PROCEDURES"

Our Abpromise to you: Quality guaranteed and expert technical support

- Replacement or refund for products not performing as stated on the datasheet
- Valid for 12 months from date of delivery
- Response to your inquiry within 24 hours
- We provide support in Chinese, English, French, German, Japanese and Spanish
- Extensive multi-media technical resources to help you
- We investigate all quality concerns to ensure our products perform to the highest standards

If the product does not perform as described on this datasheet, we will offer a refund or replacement. For full details of the Abpromise, please visit <https://www.abcam.com/abpromise> or contact our technical team.

Terms and conditions

- Guarantee only valid for products bought direct from Abcam or one of our authorized distributors