


## Product datasheet

### Anti-Aldolase antibody [EPR9725] $\alpha$ b150396

Recombinant RabMAb

[1 References](#) [2 Images](#)

#### Overview

<b>Product name</b>	Anti-Aldolase antibody [EPR9725]
<b>Description</b>	Rabbit monoclonal [EPR9725] to Aldolase
<b>Host species</b>	Rabbit
<b>Tested applications</b>	<b>Suitable for:</b> WB <b>Unsuitable for:</b> Flow Cyt, ICC/IF, IHC-P or IP
<b>Species reactivity</b>	<b>Reacts with:</b> Human <b>Predicted to work with:</b> Rat 
<b>Immunogen</b>	Synthetic peptide within Human Aldolase aa 300-400 (C terminal). The exact sequence is proprietary.
<b>Positive control</b>	MCF7, HepG2, and A549 cell lysates.
<b>General notes</b>	<p>This product is a recombinant monoclonal antibody, which offers several advantages including:</p> <ul style="list-style-type: none"> <li>- High batch-to-batch consistency and reproducibility</li> <li>- Improved sensitivity and specificity</li> <li>- Long-term security of supply</li> <li>- Animal-free production</li> </ul> <p>For more information <a href="#">see here</a>.</p> <p>Our RabMAb<sup>®</sup> technology is a patented hybridoma-based technology for making rabbit monoclonal antibodies. For details on our patents, please refer to <a href="#">RabMAb<sup>®</sup> patents</a>.</p> <p>Mouse: We have preliminary internal testing data to indicate this antibody may not react with this species. Please contact us for more information.</p>

#### Properties

<b>Form</b>	Liquid
<b>Storage instructions</b>	Shipped at 4°C. Upon delivery aliquot and store at -20°C. Avoid repeated freeze / thaw cycles.
<b>Storage buffer</b>	pH: 7.2 Preservative: 0.01% Sodium azide Constituents: 9% PBS, 40% Glycerol (glycerin, glycerine), 0.05% BSA, 50% Tissue culture supernatant

<b>Purity</b>	Protein A purified
<b>Clonality</b>	Monoclonal
<b>Clone number</b>	EPR9725
<b>Isotype</b>	IgG

## Applications

**The Abpromise guarantee** Our **Abpromise guarantee** covers the use of ab150396 in the following tested applications.

The application notes include recommended starting dilutions; optimal dilutions/concentrations should be determined by the end user.

Application	Abreviews	Notes
<b>WB</b>		1/1000 - 1/10000. Predicted molecular weight: 39 kDa.

**Application notes** Is unsuitable for Flow Cyt, ICC/IF, IHC-P or IP.

## Target

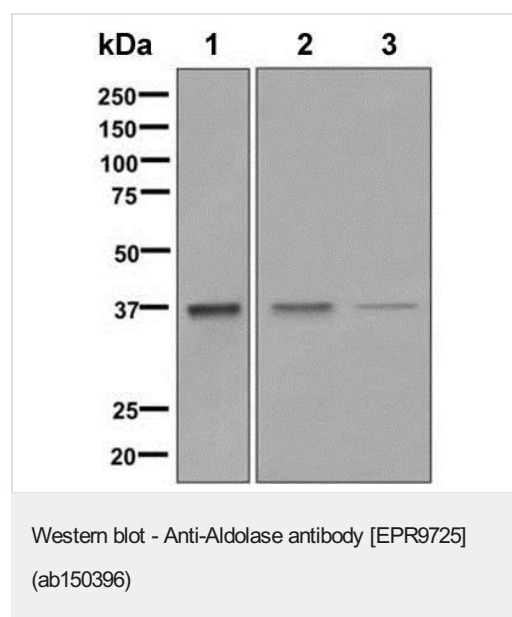
**Function** Plays a key role in glycolysis and gluconeogenesis. In addition, may also function as scaffolding protein.

**Pathway** Carbohydrate degradation; glycolysis; D-glyceraldehyde 3-phosphate and glyceralone phosphate from D-glucose: step 4/4.

**Involvement in disease** Defects in ALDOA are the cause of glycogen storage disease type 12 (GSD12) [MIM:611881]; also known as red cell aldolase deficiency. A metabolic disorder associated with increased hepatic glycogen and hemolytic anemia. It may lead to myopathy with exercise intolerance and rhabdomyolysis.

**Sequence similarities** Belongs to the class I fructose-bisphosphate aldolase family.

## Images



**All lanes** : Anti-Aldolase antibody [EPR9725] (ab150396) at 1/1000 dilution

**Lane 1** : MCF7 cell lysate

**Lane 2** : HepG2 cell lysate

**Lane 3** : A549 cell lysate

Lysates/proteins at 10 µg per lane.

**Secondary**

**All lanes** : HRP labelled goat anti-rabbit at 1/2000 dilution

**Predicted band size:** 39 kDa

### Why choose a recombinant antibody?



**Research with confidence**  
Consistent and reproducible results



**Long-term and scalable supply**  
Recombinant technology



**Success from the first experiment**  
Confirmed specificity



**Ethical standards compliant**  
Animal-free production

Anti-Aldolase antibody [EPR9725] (ab150396)

**Please note:** All products are "FOR RESEARCH USE ONLY. NOT FOR USE IN DIAGNOSTIC PROCEDURES"

### Our Abpromise to you: Quality guaranteed and expert technical support

---

- Replacement or refund for products not performing as stated on the datasheet
- Valid for 12 months from date of delivery
- Response to your inquiry within 24 hours
- We provide support in Chinese, English, French, German, Japanese and Spanish
- Extensive multi-media technical resources to help you
- We investigate all quality concerns to ensure our products perform to the highest standards

If the product does not perform as described on this datasheet, we will offer a refund or replacement. For full details of the Abpromise, please visit <https://www.abcam.com/abpromise> or contact our technical team.

### Terms and conditions

---

- Guarantee only valid for products bought direct from Abcam or one of our authorized distributors