

Alexa Fluor® 405 Rabbit IgG, monoclonal [EPR25A] - Isotype Control ab208150

Recombinant RabMAb

[1 References](#) [3 Images](#)

Overview

Product name	Alexa Fluor® 405 Rabbit IgG, monoclonal [EPR25A] - Isotype Control
Conjugation	Alexa Fluor® 405. Ex: 402nm, Em: 421nm
Tested applications	Suitable for: Flow Cyt (Intra), ICC/IF
Immunogen	Chemical/ Small Molecule conjugated to keyhole limpet haemocyanin. KLH is a copper containing oxygen carrier occurring freely dissolved in the hemolymph of many molluscs and arthropods. KLH forms a large complex composed of ~50 kDa subunits.
General notes	<p>KLH is often used in molecular immunology as a carrier protein conjugated to low molecular weight molecules such as peptides, amino acids, nucleic acids, drugs or toxins to render them more immunogenic due to the size of the conjugate complex and the immunogenicity of KLH.</p> <p>This product is a recombinant monoclonal antibody, which offers several advantages including:</p> <ul style="list-style-type: none"> - High batch-to-batch consistency and reproducibility - Improved sensitivity and specificity - Long-term security of supply - Animal-free production <p>For more information see here.</p> <p>Our RabMAb® technology is a patented hybridoma-based technology for making rabbit monoclonal antibodies. For details on our patents, please refer to RabMAb® patents.</p> <p>Alexa Fluor® is a registered trademark of Molecular Probes, Inc, a Thermo Fisher Scientific Company. The Alexa Fluor® dye included in this product is provided under an intellectual property license from Life Technologies Corporation. As this product contains the Alexa Fluor® dye, the purchase of this product conveys to the buyer the non-transferable right to use the purchased product and components of the product only in research conducted by the buyer (whether the buyer is an academic or for-profit entity). As this product contains the Alexa Fluor® dye the sale of this product is expressly conditioned on the buyer not using the product or its components, or any materials made using the product or its components, in any activity to generate revenue, which may include, but is not limited to use of the product or its components: in manufacturing; (ii) to provide a service, information, or data in return for payment (iii) for therapeutic, diagnostic or prophylactic purposes; or (iv) for resale, regardless of whether they are sold for use in research. For information on purchasing a license to this product for purposes other than research, contact Life Technologies Corporation, 5781 Van Allen Way, Carlsbad, CA 92008 USA or</p>

Properties

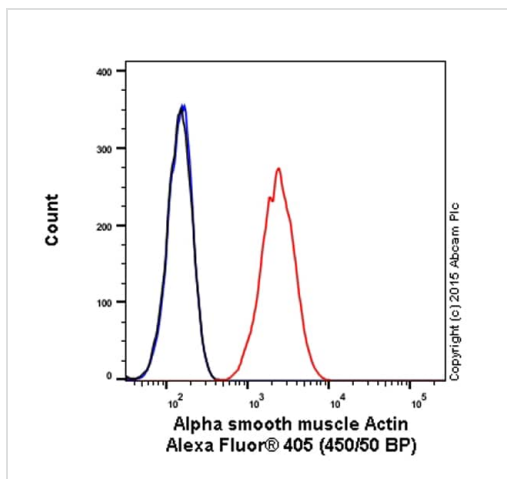
Form	Liquid
Storage instructions	Shipped at 4°C. Store at +4°C short term (1-2 weeks). Upon delivery aliquot. Store at -20°C long term. Avoid freeze / thaw cycle. Store In the Dark.
Storage buffer	pH: 7.40 Preservative: 0.02% Sodium azide Constituents: PBS, 30% Glycerol (glycerin, glycerine), 1% BSA
Purity	Protein A purified
Clonality	Monoclonal
Clone number	EPR25A
Isotype	IgG
Cellular localization	Secreted

Applications

The Abpromise guarantee Our **Abpromise guarantee** covers the use of ab208150 in the following tested applications. The application notes include recommended starting dilutions; optimal dilutions/concentrations should be determined by the end user.

Application	Abreviews	Notes
Flow Cyt (Intra)		Use at an assay dependent concentration. Please note: This product should be diluted to the same concentration (not dilution) of the primary antibody to be used.
ICC/IF		Use at an assay dependent concentration. Please note: This product should be diluted to the same concentration (not dilution) of the primary antibody to be used.

Images



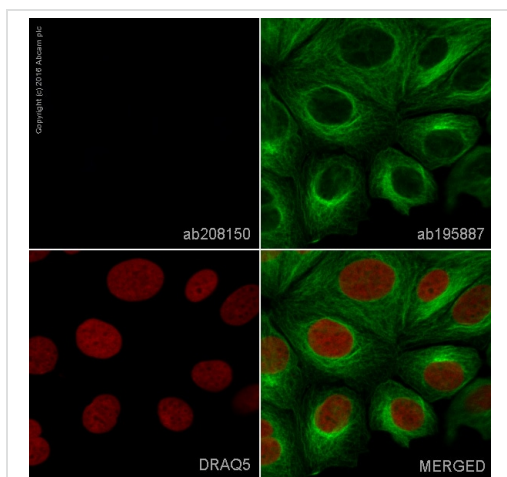
Flow Cytometry (Intracellular) - Alexa Fluor® 405
Rabbit IgG, monoclonal [EPR25A] - Isotype Control
(ab208150)

Overlay histogram showing HeLa cells stained with **ab210128** (red line). The cells were fixed with 4% formaldehyde (10 min) and then permeabilized with 0.1% PBS-Triton X-100 for 15 min, blocked with Image-iT® FX Signal Enhancer for 30 min at 22°C and then blocked with 1x PBS / 10% normal goat serum for 1 hr at 22°C. Cells were then incubated with the antibody (**ab210128**, 1/50 dilution) for 30 min at 22°C.

Isotype control antibody (black line) was rabbit IgG (monoclonal) Alexa Fluor® 405 (ab208150) used at the same concentration and conditions as the primary antibody. Unlabelled sample (blue line) was also used as a control.

Acquisition of >5,000 events were collected using a 50mW violet laser (405nm) and 450/50 bandpass filter.

This antibody gave a positive signal in HeLa cells fixed with 80% methanol (5 min)/permeabilized with 0.1% PBS-Triton X-100 for 15 min used under the same conditions.



Immunocytochemistry/ Immunofluorescence - Alexa
Fluor® 405 Rabbit IgG, monoclonal [EPR25A] -
Isotype Control (ab208150)

Immunofluorescent analysis of MCF7 (human breast cancer) cells, fixed with 4% formaldehyde (10 min). The cells were permeabilized with 0.1% Triton X-100 for 5 minutes, blocked with Image-iT® FX Signal Enhancer at room temperature for 30 minutes and then blocked with 1% BSA/10% normal goat serum/0.3M glycine in 0.1% PBS-Tween for 1h. The cells were then incubated overnight at +4°C with ab208150 (Rabbit IgG, monoclonal [EPR25A] - Isotype Control) at 1/100 dilution (showing no signal) and **ab195887**, Mouse monoclonal to alpha Tubulin (Alexa Fluor® 488), at 1/250 dilution (shown in green). Nuclear DNA was labelled with **ab108410**, DRAQ5™ at 1.25uM (1/4000 dilution) (shown in red).

Image was taken with a confocal microscope (Leica-Microsystems, TCS SP8).

This product also gave a positive signal under the same testing conditions in MCF7 cells fixed with 100% methanol (5min).

Why choose a recombinant antibody?



Research with confidence
Consistent and reproducible results



Long-term and scalable supply
Recombinant technology



Success from the first experiment
Confirmed specificity



Ethical standards compliant
Animal-free production

Alexa Fluor® 405 Rabbit IgG, monoclonal [EPR25A]

- Isotype Control (ab208150)

Please note: All products are "FOR RESEARCH USE ONLY. NOT FOR USE IN DIAGNOSTIC PROCEDURES"

Our Abpromise to you: Quality guaranteed and expert technical support

- Replacement or refund for products not performing as stated on the datasheet
- Valid for 12 months from date of delivery
- Response to your inquiry within 24 hours
- We provide support in Chinese, English, French, German, Japanese and Spanish
- Extensive multi-media technical resources to help you
- We investigate all quality concerns to ensure our products perform to the highest standards

If the product does not perform as described on this datasheet, we will offer a refund or replacement. For full details of the Abpromise, please visit <https://www.abcam.com/abpromise> or contact our technical team.

Terms and conditions

- Guarantee only valid for products bought direct from Abcam or one of our authorized distributors