

## Product datasheet

# Alexa Fluor® 647 Anti-beta 2 Microglobulin antibody [B2M01] ab187602

2 Images

### Overview

<b>Product name</b>	Alexa Fluor® 647 Anti-beta 2 Microglobulin antibody [B2M01]
<b>Description</b>	Alexa Fluor® 647 Mouse monoclonal [B2M01] to beta 2 Microglobulin
<b>Host species</b>	Mouse
<b>Conjugation</b>	Alexa Fluor® 647. Ex: 652nm, Em: 668nm
<b>Specificity</b>	ab187602 reacts with beta 2 microglobulin associated with cell-surface MHC Class I molecules and other membrane antigens as well as with soluble beta 2 microglobulin.
<b>Tested applications</b>	<b>Suitable for:</b> Flow Cyt, ICC/IF
<b>Species reactivity</b>	<b>Reacts with:</b> Human <b>Does not react with:</b> Mouse, Rabbit, Chicken, Cow, Dog
<b>Immunogen</b>	Full length native protein (purified) corresponding to Human beta 2 Microglobulin. Database link: <a href="#">P61769</a>
<b>General notes</b>	<p>The Life Science industry has been in the grips of a reproducibility crisis for a number of years. Abcam is leading the way in addressing this with our range of recombinant monoclonal antibodies and knockout edited cell lines for gold-standard validation. Please check that this product meets your needs before purchasing.</p> <p>If you have any questions, special requirements or concerns, please send us an inquiry and/or contact our Support team ahead of purchase. Recommended alternatives for this product can be found below, along with publications, customer reviews and Q&amp;As</p>

### Properties

<b>Form</b>	Liquid
<b>Storage instructions</b>	Shipped at 4°C. Store at +4°C. Store In the Dark.
<b>Storage buffer</b>	pH: 7.40 Preservative: 0.097% Sodium azide Constituent: 99% PBS
<b>Purity</b>	Size exclusion
<b>Clonality</b>	Monoclonal
<b>Clone number</b>	B2M01

## Applications

---

**The Abpromise guarantee** Our **Abpromise guarantee** covers the use of ab187602 in the following tested applications.

The application notes include recommended starting dilutions; optimal dilutions/concentrations should be determined by the end user.

Application	Abreviews	Notes
Flow Cyt		Use a concentration of 1 - 5 µg/ml.
ICC/IF		Use at an assay dependent concentration.

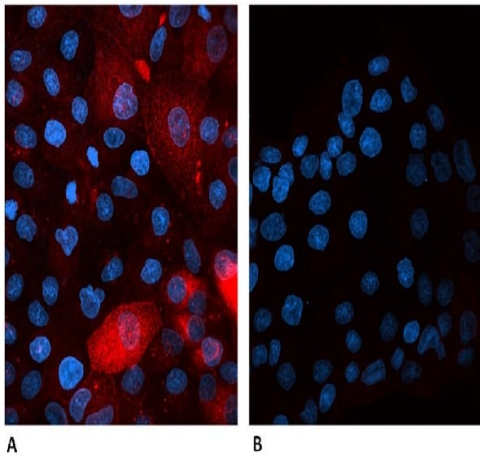
## Target

---

<b>Function</b>	Component of the class I major histocompatibility complex (MHC). Involved in the presentation of peptide antigens to the immune system.
<b>Involvement in disease</b>	Defects in B2M are the cause of hypercatabolic hypoproteinemia (HYCATHYP) [MIM:241600]. Affected individuals show marked reduction in serum concentrations of immunoglobulin and albumin, probably due to rapid degradation. Note=Beta-2-microglobulin may adopt the fibrillar configuration of amyloid in certain pathologic states. The capacity to assemble into amyloid fibrils is concentration dependent. Persistently high beta(2)-microglobulin serum levels lead to amyloidosis in patients on long-term hemodialysis.
<b>Sequence similarities</b>	Belongs to the beta-2-microglobulin family. Contains 1 Ig-like C1-type (immunoglobulin-like) domain.
<b>Post-translational modifications</b>	Glycation of Ile-21 is observed in long-term hemodialysis patients.
<b>Cellular localization</b>	Secreted. Detected in serum and urine.

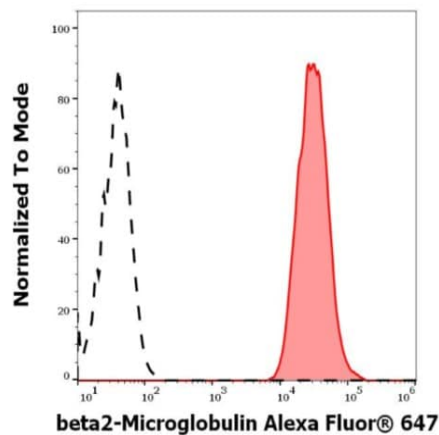
## Images

---



Immunocytochemistry/ Immunofluorescence - Alexa Fluor® 647 Anti-beta 2 Microglobulin antibody [B2M01] (ab187602)

Immunocytochemistry/ Immunofluorescence of Human beta 2 Microglobulin-transfected canine cells labeled A) with ab187602 and B) with Alexa Fluor® 647 conjugated Mouse IgG2a Isotype Control. Cells were fixed with 4% PFA and permeabilized with 0.1% PBS-Tween20 containing 2% BSA. Antibody concentration 2µg/ml.



Flow Cytometry - Alexa Fluor® 647 Anti-beta 2 Microglobulin antibody [B2M01] (ab187602)

Flow Cytometry analysis of lymphocytes stained using ab187602 (red) at 5µg/ml, separated from unstained lymphocytes (black-dashed).

**Please note:** All products are "FOR RESEARCH USE ONLY. NOT FOR USE IN DIAGNOSTIC PROCEDURES"

### Our Abpromise to you: Quality guaranteed and expert technical support

- Replacement or refund for products not performing as stated on the datasheet
- Valid for 12 months from date of delivery
- Response to your inquiry within 24 hours
- We provide support in Chinese, English, French, German, Japanese and Spanish
- Extensive multi-media technical resources to help you
- We investigate all quality concerns to ensure our products perform to the highest standards

If the product does not perform as described on this datasheet, we will offer a refund or replacement. For full details of the Abpromise, please visit <https://www.abcam.com/abpromise> or contact our technical team.

## Terms and conditions

---

- Guarantee only valid for products bought direct from Abcam or one of our authorized distributors