


## Product datasheet

### Anti-ALIX antibody ab76608

[20 References](#) [2 Images](#)

#### Overview

<b>Product name</b>	Anti-ALIX antibody
<b>Description</b>	Rabbit polyclonal to ALIX
<b>Host species</b>	Rabbit
<b>Tested applications</b>	<b>Suitable for:</b> WB, IHC-P
<b>Species reactivity</b>	<b>Reacts with:</b> Human <b>Predicted to work with:</b> Mouse, Rat, Chicken, Orangutan 
<b>Immunogen</b>	Synthetic peptide corresponding to Human ALIX aa 450-550 conjugated to keyhole limpet haemocyanin. (Peptide available as <a href="#">ab88953</a> )
<b>Positive control</b>	This antibody gave a positive signal in the following whole cell lysates: HeLa, SHSY5Y and HUVEC. This antibody gave a positive result in IHC in the following FFPE tissue: Human breast cancer.
<b>General notes</b>	<p>The Life Science industry has been in the grips of a reproducibility crisis for a number of years. Abcam is leading the way in addressing this with our range of recombinant monoclonal antibodies and knockout edited cell lines for gold-standard validation. Please check that this product meets your needs before purchasing.</p> <p>If you have any questions, special requirements or concerns, please send us an inquiry and/or contact our Support team ahead of purchase. Recommended alternatives for this product can be found below, along with publications, customer reviews and Q&amp;As</p>

#### Properties

<b>Form</b>	Liquid
<b>Storage instructions</b>	Shipped at 4°C. Store at +4°C short term (1-2 weeks). Upon delivery aliquot. Store at -20°C or -80°C. Avoid freeze / thaw cycle.
<b>Storage buffer</b>	pH: 7.40 Preservative: 0.02% Sodium azide Constituent: PBS  Batches of this product that have a concentration < 1mg/ml may have BSA added as a stabilising agent. If you would like information about the formulation of a specific lot, please contact our scientific support team who will be happy to help.

<b>Purity</b>	Immunogen affinity purified
<b>Clonality</b>	Polyclonal
<b>Isotype</b>	IgG

## Applications

**The Abpromise guarantee** Our **Abpromise guarantee** covers the use of ab76608 in the following tested applications.

The application notes include recommended starting dilutions; optimal dilutions/concentrations should be determined by the end user.

Application	Abreviews	Notes
<b>WB</b>		Use a concentration of 1 µg/ml. Detects a band of approximately 100 kDa (predicted molecular weight: 96 kDa).
<b>IHC-P</b>		Use a concentration of 5 µg/ml.

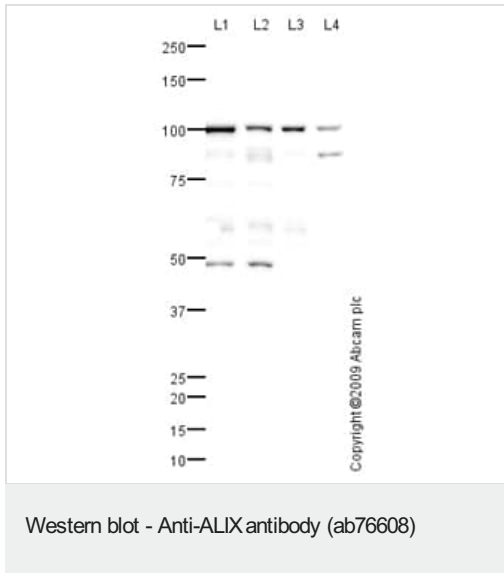
## Target

**Function** Class E VPS protein involved in concentration and sorting of cargo proteins of the multivesicular body (MVB) for incorporation into intraluminal vesicles (ILVs) that are generated by invagination and scission from the limiting membrane of the endosome. Binds to the phospholipid lysobisphosphatidic acid (LBPA) which is abundant in MVBs internal membranes. The MVB pathway appears to require the sequential function of ESCRT-O, -I, -II and -III complexes. The ESCRT machinery also functions in topologically equivalent membrane fission events, such as the terminal stages of cytokinesis and enveloped virus budding (HIV-1 and other lentiviruses). Appears to be an adapter for a subset of ESCRT-III proteins, such as CHMP4, to function at distinct membranes. Required for completion of cytokinesis. Involved in HIV-1 virus budding. Can replace TSG101 in its role of supporting HIV-1 release; this function implies the interaction with CHMP4B. May play a role in the regulation of both apoptosis and cell proliferation.

**Sequence similarities** Contains 1 BRO1 domain.

**Cellular localization** Cytoplasm > cytosol. Melanosome. Cytoplasm > cytoskeleton > centrosome. Identified by mass spectrometry in melanosome fractions from stage I to stage IV. Colocalized with CEP55 in the midbody during cytokinesis. Colocalized with CEP55 at centrosomes of non-dividing cells.

## Images



**All lanes :** Anti-ALIX antibody (ab76608) at 1 µg/ml

**Lane 1 :** HeLa (Human epithelial carcinoma cell line) Whole Cell Lysate

**Lane 2 :** HepG2 (Human hepatocellular liver carcinoma cell line) Whole Cell Lysate

**Lane 3 :** SHSY-5Y (Human neuroblastoma cell line) Whole Cell Lysate

**Lane 4 :** HUVEC (Human Umbilical Vein Endothelial Cell) Whole Cell Lysate

Lysates/proteins at 10 µg per lane.

### Secondary

**All lanes :** Goat polyclonal to Rabbit IgG - H&L - Pre-Adsorbed (HRP) at 1/3000 dilution

Developed using the ECL technique.

Performed under reducing conditions.

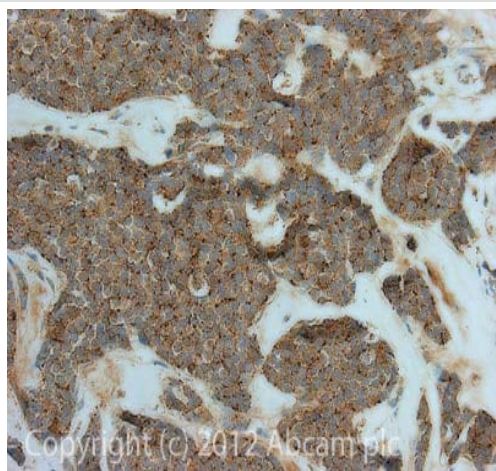
**Predicted band size:** 96 kDa

**Observed band size:** 100 kDa

**Additional bands at:** 48 kDa, 90 kDa. We are unsure as to the identity of these extra bands.

**Exposure time:** 2 minutes

Programmed cell death 6-interacting protein (PDC6I) contains a number of potential phosphorylation sites (SwissProt) which may explain its migration at a higher molecular weight (100 kDa) than predicted (96 kDa).



Immunohistochemistry (Formalin/PFA-fixed paraffin-embedded sections) - Anti-ALIX antibody (ab76608)

IHC image of PDC6I staining in Human breast cancer formalin fixed paraffin embedded tissue section, performed on a Leica Bond<sup>TM</sup> system using the standard protocol F. The section was pre-treated using heat mediated antigen retrieval with sodium citrate buffer (pH6, epitope retrieval solution 1) for 20 mins. The section was then incubated with ab76608, 5µg/ml, for 15 mins at room temperature and detected using an HRP conjugated compact polymer system. DAB was used as the chromogen. The section was then counterstained with haematoxylin and mounted with DPX.

For other IHC staining systems (automated and non-automated) customers should optimize variable parameters such as antigen retrieval conditions, primary antibody concentration and antibody incubation times.

**Please note:** All products are "FOR RESEARCH USE ONLY. NOT FOR USE IN DIAGNOSTIC PROCEDURES"

### Our Abpromise to you: Quality guaranteed and expert technical support

---

- Replacement or refund for products not performing as stated on the datasheet
- Valid for 12 months from date of delivery
- Response to your inquiry within 24 hours
- We provide support in Chinese, English, French, German, Japanese and Spanish
- Extensive multi-media technical resources to help you
- We investigate all quality concerns to ensure our products perform to the highest standards

If the product does not perform as described on this datasheet, we will offer a refund or replacement. For full details of the Abpromise, please visit <https://www.abcam.com/abpromise> or contact our technical team.

### Terms and conditions

---

- Guarantee only valid for products bought direct from Abcam or one of our authorized distributors