




Product datasheet

Anti-alpha 1 Fetoprotein antibody [C2] - BSA and Azide free ab212325

1 Image

Overview

| | |
|----------------------------|---|
| Product name | Anti-alpha 1 Fetoprotein antibody [C2] - BSA and Azide free |
| Description | Mouse monoclonal [C2] to alpha 1 Fetoprotein - BSA and Azide free |
| Host species | Mouse |
| Tested applications | Suitable for: IHC-P |
| Species reactivity | Reacts with: Human Predicted to work with: Chimpanzee, Gorilla  Does not react with: Rat, Cow, Dog |
| Immunogen | Full length native protein (purified) corresponding to Human alpha 1 Fetoprotein aa 1 to the C-terminus. purified from serum of a hepatoma patient. Database link: P02771  Run BLAST with  Run BLAST with |
| Positive control | HepG2 cells; Human fetal liver or hepatocellular carcinoma tissues. |
| General notes | <p>The Life Science industry has been in the grips of a reproducibility crisis for a number of years. Abcam is leading the way in addressing this with our range of recombinant monoclonal antibodies and knockout edited cell lines for gold-standard validation. Please check that this product meets your needs before purchasing.</p> <p>If you have any questions, special requirements or concerns, please send us an inquiry and/or contact our Support team ahead of purchase. Recommended alternatives for this product can be found below, along with publications, customer reviews and Q&As</p> |

Properties

| | |
|-----------------------------|---|
| Form | Liquid |
| Storage instructions | Shipped at 4°C. Store at +4°C short term (1-2 weeks). Upon delivery aliquot. Store at -20°C long term. Avoid freeze / thaw cycle. |
| Storage buffer | pH: 7.2 Constituent: 100% PBS |
| Carrier free | Yes |
| Purity | Protein A/G purified |
| Purification notes | ab212325 is purified from Bioreactor Concentrate by Protein A/G. |

| | |
|-------------------------|------------|
| Clonality | Monoclonal |
| Clone number | C2 |
| Isotype | IgG1 |
| Light chain type | kappa |

Applications

The Abpromise guarantee Our **Abpromise guarantee** covers the use of ab212325 in the following tested applications.

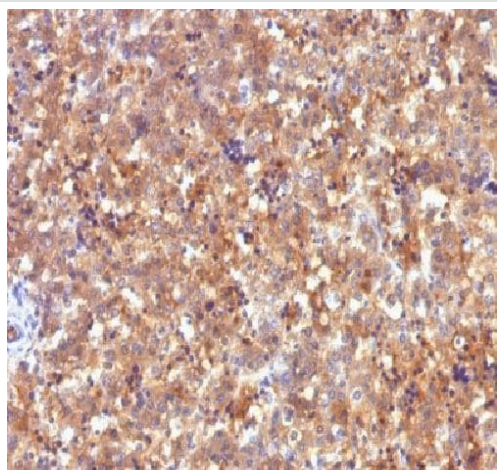
The application notes include recommended starting dilutions; optimal dilutions/concentrations should be determined by the end user.

| Application | Abreviews | Notes |
|-------------|-----------|---|
| IHC-P | | Use a concentration of 1 - 2 µg/ml. Perform heat mediated antigen retrieval with citrate buffer pH 6 before commencing with IHC staining protocol. for 30 minutes at RT |

Target

| | |
|---|--|
| Function | Binds copper, nickel, and fatty acids as well as, and bilirubin less well than, serum albumin. Only a small percentage (less than 2%) of the human AFP shows estrogen-binding properties. |
| Tissue specificity | Plasma. Synthesized by the fetal liver and yolk sac. |
| Sequence similarities | Belongs to the ALB/AFP/VDB family. Contains 3 albumin domains. |
| Developmental stage | Occurs in the plasma of fetuses more than 4 weeks old, reaches the highest levels during the 12th-16th week of gestation, and drops to trace amounts after birth. The serum level in adults is usually less than 40 ng/ml. AFP occurs also at high levels in the plasma and ascitic fluid of adults with hepatoma. |
| Post-translational modifications | Independent studies suggest heterogeneity of the N-terminal sequence of the mature protein and of the cleavage site of the signal sequence. Sulfated. |
| Cellular localization | Secreted. |

Images



Immunohistochemical analysis of formalin fixed, paraffin embedded Human fetal liver tissue labeling alpha 1 Fetoprotein with ab212325 at 2 ug/ml.

Immunohistochemistry (Formalin/PFA-fixed paraffin-embedded sections) - Anti-alpha 1 Fetoprotein antibody [C2] - BSA and Azide free (ab212325)

Please note: All products are "FOR RESEARCH USE ONLY. NOT FOR USE IN DIAGNOSTIC PROCEDURES"

Our Abpromise to you: Quality guaranteed and expert technical support

- Replacement or refund for products not performing as stated on the datasheet
- Valid for 12 months from date of delivery
- Response to your inquiry within 24 hours
- We provide support in Chinese, English, French, German, Japanese and Spanish
- Extensive multi-media technical resources to help you
- We investigate all quality concerns to ensure our products perform to the highest standards

If the product does not perform as described on this datasheet, we will offer a refund or replacement. For full details of the Abpromise, please visit <https://www.abcam.com/abpromise> or contact our technical team.

Terms and conditions

- Guarantee only valid for products bought direct from Abcam or one of our authorized distributors