


Product datasheet

Anti-alpha 1 Sodium Potassium ATPase (phospho S16) antibody ab194532

[1 Image](#)

Overview

Product name	Anti-alpha 1 Sodium Potassium ATPase (phospho S16) antibody
Description	Rabbit polyclonal to alpha 1 Sodium Potassium ATPase (phospho S16)
Host species	Rabbit
Tested applications	Suitable for: WB
Species reactivity	Reacts with: Human Predicted to work with: Mouse, Rat 
Immunogen	Synthetic peptide corresponding to Human alpha 1 Sodium Potassium ATPase (phospho S16) conjugated to Keyhole Limpet Haemocyanin (KLH). Peptide sequence around phosphorylation site of serine 16 (A-V-S(p)-E-Q) derived from Human alpha 1 Sodium Potassium ATPase. Database link: P05023
Positive control	293 cell extract, treated with PMA.
General notes	<p>The Life Science industry has been in the grips of a reproducibility crisis for a number of years. Abcam is leading the way in addressing this with our range of recombinant monoclonal antibodies and knockout edited cell lines for gold-standard validation. Please check that this product meets your needs before purchasing.</p> <p>If you have any questions, special requirements or concerns, please send us an inquiry and/or contact our Support team ahead of purchase. Recommended alternatives for this product can be found below, along with publications, customer reviews and Q&As</p>

Properties

Form	Liquid
Storage instructions	Shipped at 4°C. Store at +4°C short term (1-2 weeks). Upon delivery aliquot. Store at -20°C long term. Avoid freeze / thaw cycle.
Storage buffer	pH: 7.40 Preservative: 0.02% Sodium azide Constituents: 50% Glycerol (glycerin, glycerine), 0.87% Sodium chloride, 49% PBS PBS (without Mg ²⁺ and Ca ²⁺)
Purity	Immunogen affinity purified

Purification notes	ab194532 was purified by affinity-chromatography using epitope-specific phosphopeptide. Non-phospho specific antibodies were removed by chromatography using non-phosphopeptide.
Clonality	Polyclonal
Isotype	IgG

Applications

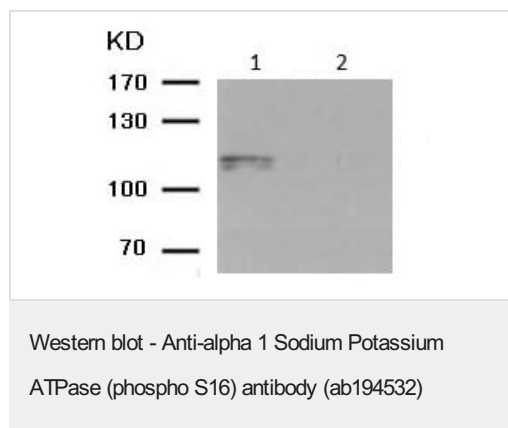
The Abpromise guarantee Our **Abpromise guarantee** covers the use of ab194532 in the following tested applications. The application notes include recommended starting dilutions; optimal dilutions/concentrations should be determined by the end user.

Application	Abreviews	Notes
WB		1/500 - 1/1000. Predicted molecular weight: 113 kDa.

Target

Function	This is the catalytic component of the active enzyme, which catalyzes the hydrolysis of ATP coupled with the exchange of sodium and potassium ions across the plasma membrane. This action creates the electrochemical gradient of sodium and potassium ions, providing the energy for active transport of various nutrients.
Sequence similarities	Belongs to the cation transport ATPase (P-type) (TC 3.A.3) family. Type IIC subfamily.
Post-translational modifications	Phosphorylation on Tyr-10 modulates pumping activity.
Cellular localization	Cell membrane. Melanosome. Identified by mass spectrometry in melanosome fractions from stage I to stage IV.

Images



All lanes : Anti-alpha 1 Sodium Potassium ATPase (phospho S16) antibody (ab194532) at 1/500 dilution

Lane 1 : 293 cell extract, treated with PMA

Lane 2 : 293 cell extract, treated with PMA with antigen-specific peptide

Predicted band size: 113 kDa

Please note: All products are "FOR RESEARCH USE ONLY. NOT FOR USE IN DIAGNOSTIC PROCEDURES"

Our Abpromise to you: Quality guaranteed and expert technical support

- Replacement or refund for products not performing as stated on the datasheet
- Valid for 12 months from date of delivery
- Response to your inquiry within 24 hours

- We provide support in Chinese, English, French, German, Japanese and Spanish
- Extensive multi-media technical resources to help you
- We investigate all quality concerns to ensure our products perform to the highest standards

If the product does not perform as described on this datasheet, we will offer a refund or replacement. For full details of the Abpromise, please visit <https://www.abcam.com/abpromise> or contact our technical team.

Terms and conditions

- Guarantee only valid for products bought direct from Abcam or one of our authorized distributors