


Anti-alpha Adducin (phospho S726) antibody [EP734Y] ab40760

RabMAb

[2 References](#) [4 Images](#)

Overview

Product name	Anti-alpha Adducin (phospho S726) antibody [EP734Y]
Description	Rabbit monoclonal [EP734Y] to alpha Adducin (phospho S726)
Host species	Rabbit
Tested applications	Suitable for: WB, IHC-P, ICC/IF Unsuitable for: Flow Cyt or IP
Species reactivity	Reacts with: Human Predicted to work with: Mouse, Rat 
Immunogen	Synthetic peptide. This information is proprietary to Abcam and/or its suppliers.
Positive control	WB: HeLa cell lysate. IHC-P: Human lung tissue. ICC/IF: HeLa cells.
General notes	<p>Our RabMAb[®] technology is a patented hybridoma-based technology for making rabbit monoclonal antibodies. For details on our patents, please refer to RabMAb[®] patents.</p> <p>The Life Science industry has been in the grips of a reproducibility crisis for a number of years. Abcam is leading the way in addressing this with our range of recombinant monoclonal antibodies and knockout edited cell lines for gold-standard validation. Please check that this product meets your needs before purchasing.</p> <p>If you have any questions, special requirements or concerns, please send us an inquiry and/or contact our Support team ahead of purchase. Recommended alternatives for this product can be found below, along with publications, customer reviews and Q&As</p>

Properties

Form	Liquid
Storage instructions	Shipped at 4°C. Upon delivery aliquot and store at -20°C. Avoid freeze / thaw cycles.
Storage buffer	pH: 7.20 Preservative: 0.05% Sodium azide Constituents: 99% Tissue culture supernatant, 0.1% BSA
Purity	Tissue culture supernatant

Clonality	Monoclonal
Clone number	EP734Y
Isotype	IgG

Applications

The Abpromise guarantee Our **Abpromise guarantee** covers the use of ab40760 in the following tested applications. The application notes include recommended starting dilutions; optimal dilutions/concentrations should be determined by the end user.

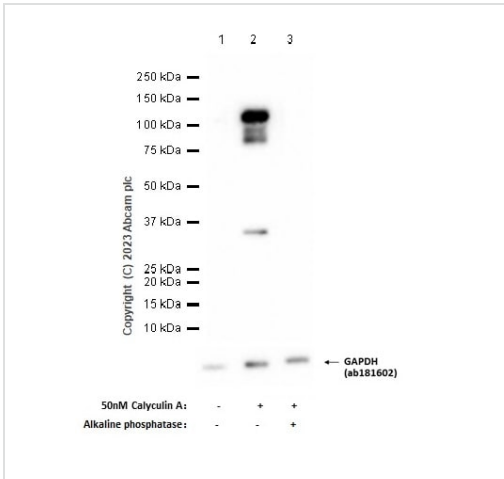
Application	Abreviews	Notes
WB		1/5000 - 1/50000. Detects a band of approximately 120 kDa (predicted molecular weight: 120 kDa).
IHC-P		1/250 - 1/500. Perform heat mediated antigen retrieval with citrate buffer pH 6 before commencing with IHC staining protocol.
ICC/IF		1/250 - 1/500.

Application notes Is unsuitable for Flow Cyt or IP.

Target

Function	Membrane-cytoskeleton-associated protein that promotes the assembly of the spectrin-actin network. Binds to calmodulin.
Tissue specificity	Expressed in all tissues. Found in much higher levels in reticulocytes than the beta subunit.
Sequence similarities	Belongs to the aldolase class II family. Adducin subfamily.
Domain	Each subunit is comprised of three regions: a NH2-terminal protease-resistant globular head region, a short connecting subdomain, and a protease-sensitive tail region.
Cellular localization	Cytoplasm > cytoskeleton. Cell membrane.

Images



Western blot - Anti-alpha Adducin (phospho S726) antibody [EP734Y] (ab40760)

All lanes : Anti-alpha Adducin (phospho S726) antibody [EP734Y] (ab40760) at 1/1000 dilution

Lane 1 : Untreated HeLa (Human cervix adenocarcinoma epithelial cell) whole cell lysate

Lane 2 : HeLa (Human cervix adenocarcinoma epithelial cell) treated with 50nM Calyculin A for 3 hours whole cell lysate

Lane 3 : HeLa (Human cervix adenocarcinoma epithelial cell) treated with 50nM Calyculin A for 3 hours whole cell lysate 20ug, then the membrane was treated with alkaline phosphatase for 1 hour

Lysates/proteins at 20 µg per lane.

Secondary

All lanes : Goat Anti-Rabbit IgG H&L (HRP) (**ab97051**) at 1/20000 dilution

Predicted band size: 120 kDa

Observed band size: 110 kDa

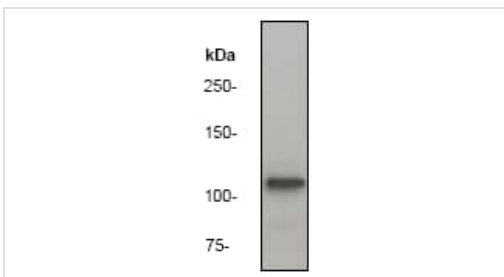
Exposure time: 7 seconds

Blocking and diluting buffer: 5% NFDm/TBST

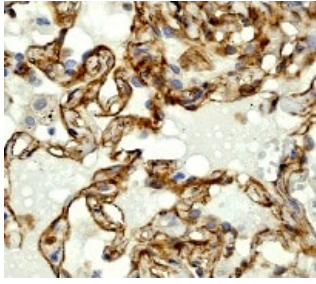
Anti-alpha Adducin (phospho S726) antibody [EP734Y] (ab40760) at 1/50000 dilution + HeLa cell lysate at 10 µg

Predicted band size: 120 kDa

Observed band size: 120 kDa



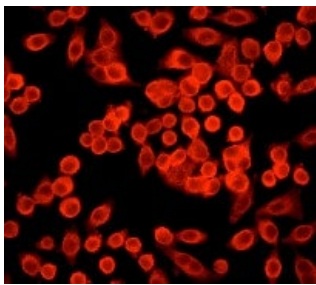
Western blot - Anti-alpha Adducin (phospho S726) antibody [EP734Y] (ab40760)



Immunohistochemistry (Formalin/PFA-fixed paraffin-embedded sections) - Anti-alpha Adducin (phospho S726) antibody [EP734Y] (ab40760)

ab40760 (1/250), staining human lung by immunohistochemistry, paraffin embedded tissue.

Perform heat mediated antigen retrieval with citrate buffer pH 6 before commencing with IHC staining protocol.



Immunocytochemistry/ Immunofluorescence - Anti-alpha Adducin (phospho S726) antibody [EP734Y] (ab40760)

ab40760, (1/250) staining HeLa cells by immunofluorescence.

Please note: All products are "FOR RESEARCH USE ONLY. NOT FOR USE IN DIAGNOSTIC PROCEDURES"

Our Abpromise to you: Quality guaranteed and expert technical support

- Replacement or refund for products not performing as stated on the datasheet
- Valid for 12 months from date of delivery
- Response to your inquiry within 24 hours
- We provide support in Chinese, English, French, German, Japanese and Spanish
- Extensive multi-media technical resources to help you
- We investigate all quality concerns to ensure our products perform to the highest standards

If the product does not perform as described on this datasheet, we will offer a refund or replacement. For full details of the Abpromise, please visit <https://www.abcam.com/abpromise> or contact our technical team.

Terms and conditions

- Guarantee only valid for products bought direct from Abcam or one of our authorized distributors