




Product datasheet

Anti-Alpha B Crystallin antibody ab65940

1 Image

Overview

Product name	Anti-Alpha B Crystallin antibody
Description	Goat polyclonal to Alpha B Crystallin
Host species	Goat
Tested applications	Suitable for: WB
Species reactivity	Reacts with: Mouse, Rat Predicted to work with: Sheep, Rabbit, Chicken, Guinea pig, Hamster, Cow, Pig, Cynomolgus monkey, Orangutan 
Immunogen	Synthetic peptide: RLEKDRFSVNLD , from the internal region of human alpha B Crystallin  Run BLAST with  Run BLAST with

General notes

The Life Science industry has been in the grips of a reproducibility crisis for a number of years. Abcam is leading the way in addressing this with our range of recombinant monoclonal antibodies and knockout edited cell lines for gold-standard validation. Please check that this product meets your needs before purchasing.

If you have any questions, special requirements or concerns, please send us an inquiry and/or contact our Support team ahead of purchase. Recommended alternatives for this product can be found below, along with publications, customer reviews and Q&As

Properties

Form	Liquid
Storage instructions	Shipped at 4°C. Store at -20°C. Stable for 12 months at -20°C.
Storage buffer	pH: 7.30 Preservative: 0.02% Sodium azide Constituents: Tris buffered saline, 0.5% BSA
Purity	Immunogen affinity purified
Purification notes	Purified from goat serum by ammonium sulphate precipitation followed by antigen affinity chromatography using the immunizing peptide.
Clonality	Polyclonal
Isotype	IgG

Applications

The Abpromise guarantee

Our **Abpromise guarantee** covers the use of ab65940 in the following tested applications.

The application notes include recommended starting dilutions; optimal dilutions/concentrations should be determined by the end user.

Application	Abreviews	Notes
WB		Use a concentration of 0.03 - 0.1 µg/ml. Detects a band of approximately 18-19 kDa (predicted molecular weight: 20 kDa). A 1 hour primary incubation is recommended for this product. Approx 22kDa band observed in Mouse and Rat Eye lysates (calculated MW of 20.1kDa according to Mouse NP_034094.1 and Rat NP_037067.1).

Target

Function

May contribute to the transparency and refractive index of the lens.

Tissue specificity

Lens as well as other tissues.

Involvement in disease

Defects in CRYAB are the cause of myofibrillar alpha-B crystallin-related (MFM-CRYAB) [MIM:608810]. A neuromuscular disorder that results in weakness of the proximal and distal limb muscles, weakness of the neck, velopharynx and trunk muscles, hypertrophic cardiomyopathy, and cataract in a subset of patients.

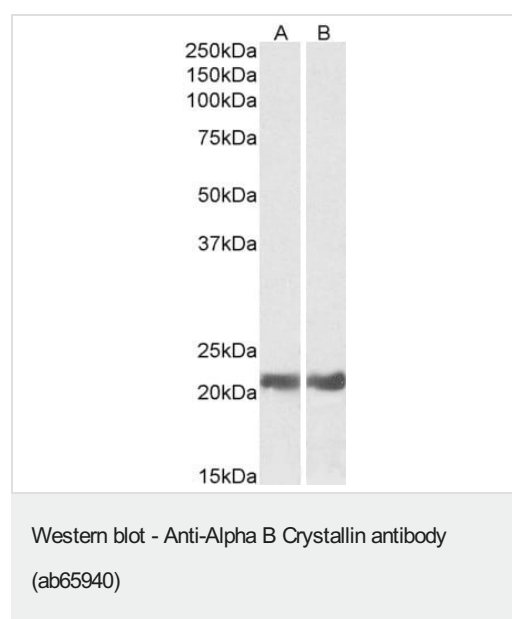
Sequence similarities

Belongs to the small heat shock protein (HSP20) family.

Cellular localization

Cytoplasm. Nucleus. Translocates to the nucleus during heat shock and resides in sub-nuclear structures known as SC35 speckles or nuclear splicing speckles.

Images



All lanes : Anti-Alpha B Crystallin antibody (ab65940) at 0.05 µg/ml

Lane 1 : Mouse eye lysate

Lane 2 : Rat eye lysate

Lysates/proteins at 35 µg per lane.

Predicted band size: 20 kDa

Please note: All products are "FOR RESEARCH USE ONLY. NOT FOR USE IN DIAGNOSTIC PROCEDURES"

Our Abpromise to you: Quality guaranteed and expert technical support

- Replacement or refund for products not performing as stated on the datasheet
- Valid for 12 months from date of delivery
- Response to your inquiry within 24 hours
- We provide support in Chinese, English, French, German, Japanese and Spanish
- Extensive multi-media technical resources to help you
- We investigate all quality concerns to ensure our products perform to the highest standards

If the product does not perform as described on this datasheet, we will offer a refund or replacement. For full details of the Abpromise, please visit <https://www.abcam.com/abpromise> or contact our technical team.

Terms and conditions

- Guarantee only valid for products bought direct from Abcam or one of our authorized distributors