

Product datasheet

Anti-alpha Lactalbumin antibody [EPR12460] ab178431

Recombinant RabMAb

2 Images

Overview

Product name	Anti-alpha Lactalbumin antibody [EPR12460]
Description	Rabbit monoclonal [EPR12460] to alpha Lactalbumin
Host species	Rabbit
Tested applications	Suitable for: WB Unsuitable for: ICC/IF, IHC or IP
Species reactivity	Reacts with: Human
Immunogen	Synthetic peptide. This information is proprietary to Abcam and/or its suppliers.
Positive control	Human milk lysate.
General notes	<p>This product is a recombinant monoclonal antibody, which offers several advantages including:</p> <ul style="list-style-type: none"> - High batch-to-batch consistency and reproducibility - Improved sensitivity and specificity - Long-term security of supply - Animal-free production <p>For more information see here.</p> <p>Our RabMAb[®] technology is a patented hybridoma-based technology for making rabbit monoclonal antibodies. For details on our patents, please refer to RabMAb[®] patents.</p> <p>Mouse, Rat: We have preliminary internal testing data to indicate this antibody may not react with these species. Please contact us for more information.</p>

Properties

Form	Liquid
Storage instructions	Shipped at 4°C. Store at +4°C short term (1-2 weeks). Upon delivery aliquot. Store at -20°C long term. Avoid freeze / thaw cycle.
Storage buffer	<p>pH: 7.20</p> <p>Preservative: 0.01% Sodium azide</p> <p>Constituents: 9% PBS, 40% Glycerol (glycerin, glycerine), 0.05% BSA, 50% Tissue culture supernatant</p>
Purity	Tissue culture supernatant

Clonality	Monoclonal
Clone number	EPR12460
Isotype	IgG

Applications

The Abpromise guarantee Our **Abpromise guarantee** covers the use of ab178431 in the following tested applications. The application notes include recommended starting dilutions; optimal dilutions/concentrations should be determined by the end user.

Application	Abreviews	Notes
WB		1/1000 - 1/10000. Detects a band of approximately 14 kDa (predicted molecular weight: 16 kDa).

Application notes Is unsuitable for ICC/IF, IHC or IP.

Target

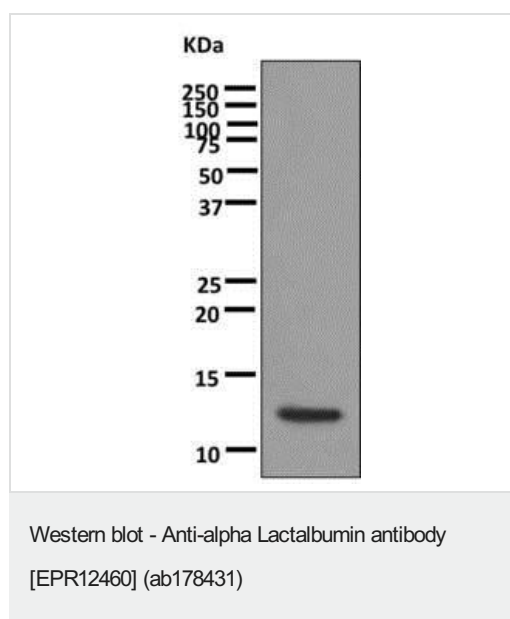
Function Regulatory subunit of lactose synthase, changes the substrate specificity of galactosyltransferase in the mammary gland making glucose a good acceptor substrate for this enzyme. This enables LS to synthesize lactose, the major carbohydrate component of milk. In other tissues, galactosyltransferase transfers galactose onto the N-acetylglucosamine of the oligosaccharide chains in glycoproteins.

Tissue specificity Mammary gland specific. Secreted in milk.

Sequence similarities Belongs to the glycosyl hydrolase 22 family.

Cellular localization Secreted.

Images



Anti-alpha Lactalbumin antibody [EPR12460] (ab178431) at 1/1000 dilution + Human milk lysate at 10 µg

Secondary

Goat anti-rabbit HRP conjugated antibody

Developed using the ECL technique.

Predicted band size: 16 kDa

Why choose a recombinant antibody?



Research with confidence
Consistent and reproducible results



Long-term and scalable supply
Recombinant technology



Success from the first experiment
Confirmed specificity



Ethical standards compliant
Animal-free production

Anti-alpha Lactalbumin antibody [EPR12460]
(ab178431)

Please note: All products are "FOR RESEARCH USE ONLY. NOT FOR USE IN DIAGNOSTIC PROCEDURES"

Our Abpromise to you: Quality guaranteed and expert technical support

- Replacement or refund for products not performing as stated on the datasheet
- Valid for 12 months from date of delivery
- Response to your inquiry within 24 hours
- We provide support in Chinese, English, French, German, Japanese and Spanish
- Extensive multi-media technical resources to help you
- We investigate all quality concerns to ensure our products perform to the highest standards

If the product does not perform as described on this datasheet, we will offer a refund or replacement. For full details of the Abpromise, please visit <https://www.abcam.com/abpromise> or contact our technical team.

Terms and conditions

- Guarantee only valid for products bought direct from Abcam or one of our authorized distributors