


Product datasheet

Anti-Alpha SNAP antibody [EPR7372] ab133673

Recombinant RabMAb

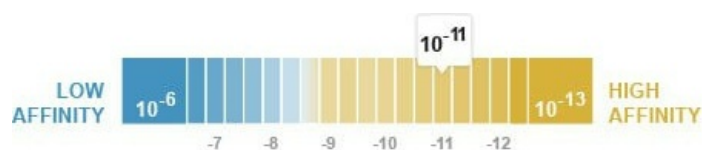
[2 References](#) [5 Images](#)

Overview

Product name	Anti-Alpha SNAP antibody [EPR7372]
Description	Rabbit monoclonal [EPR7372] to Alpha SNAP
Host species	Rabbit
Tested applications	Suitable for: WB, IHC-P, ICC/IF Unsuitable for: Flow Cyt or IP
Species reactivity	Reacts with: Human Predicted to work with: Mouse, Rat 
Immunogen	Synthetic peptide. This information is proprietary to Abcam and/or its suppliers.
Positive control	HeLa cell lysate, Molt4 cell lysate, HepG2 cells and cell lysate, Human kidney tissue.
General notes	This product is a recombinant monoclonal antibody, which offers several advantages including: <ul style="list-style-type: none"> - High batch-to-batch consistency and reproducibility - Improved sensitivity and specificity - Long-term security of supply - Animal-free production <p>For more information see here.</p> <p>Our RabMAb[®] technology is a patented hybridoma-based technology for making rabbit monoclonal antibodies. For details on our patents, please refer to RabMAb[®] patents.</p>

Properties

Form	Liquid
Storage instructions	Shipped at 4°C. Store at -20°C. Stable for 12 months at -20°C.
Dissociation constant (K_D)	K _D = 9.30 x 10 ⁻¹¹ M



[Learn more about K_D](#)

Storage buffer	pH: 7.20
-----------------------	----------

Preservative: 0.01% Sodium azide
Constituents: 9% PBS, 40% Glycerol (glycerin, glycerine), 0.05% BSA, 50% Tissue culture supernatant

Purity Protein A purified
Clonality Monoclonal
Clone number EPR7372
Isotype IgG

Applications

The Abpromise guarantee Our **Abpromise guarantee** covers the use of ab133673 in the following tested applications. The application notes include recommended starting dilutions; optimal dilutions/concentrations should be determined by the end user.

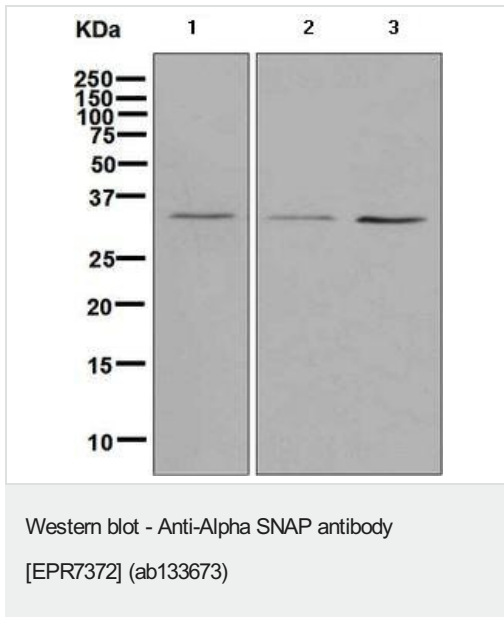
Application	Abreviews	Notes
WB		1/1000 - 1/10000. Detects a band of approximately 33 kDa (predicted molecular weight: 33 kDa).
IHC-P		1/50 - 1/100. Perform heat mediated antigen retrieval with citrate buffer pH 6 before commencing with IHC staining protocol. Perform antigen retrieval before commencing with IHC staining protocol
ICC/IF		1/100 - 1/250.

Application notes Is unsuitable for Flow Cyt or IP.

Target

Function Required for vesicular transport between the endoplasmic reticulum and the Golgi apparatus.
Sequence similarities Belongs to the SNAP family.
Cellular localization Membrane.

Images



All lanes : Anti-Alpha SNAP antibody [EPR7372] (ab133673) at 1/1000 dilution

Lane 1 : HeLa cell lysate

Lane 2 : Molt4 cell lysate

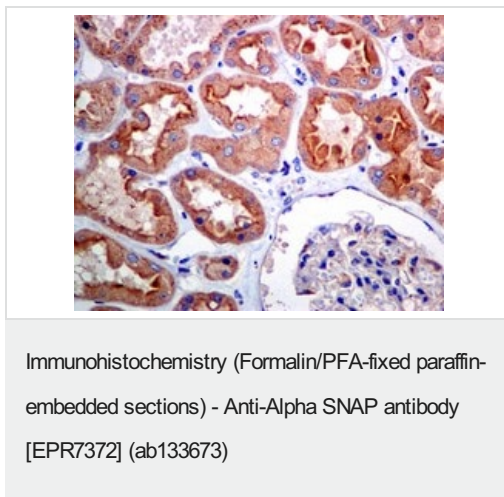
Lane 3 : HepG2 cell lysate

Lysates/proteins at 10 µg per lane.

Secondary

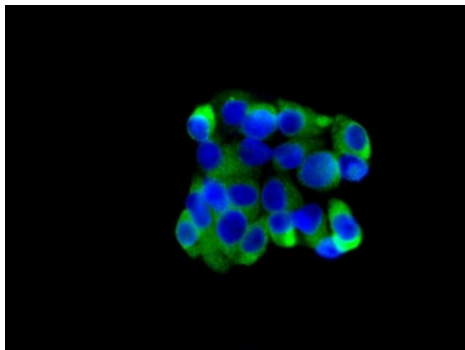
All lanes : Goat anti-rabbit HRP conjugated antibody at 1/2000 dilution

Predicted band size: 33 kDa



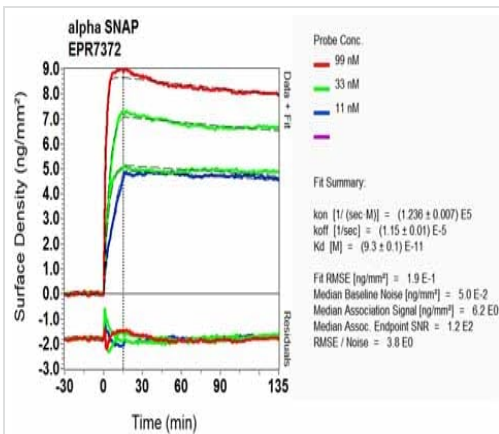
Immunohistochemical analysis of paraffin embedded Human kidney tissue labelling Alpha SNAP with ab133673 at 1/50.

Perform heat mediated antigen retrieval with citrate buffer pH 6 before commencing with IHC staining protocol.



Immunocytochemistry/ Immunofluorescence - Anti-Alpha SNAP antibody [EPR7372] (ab133673)

Immunofluorescent staining of HepG2 cells labelling Alpha SNAP with ab133673 at 1/100.



OI-RD Scanning - Anti-Alpha SNAP antibody [EPR7372] (ab133673)

Equilibrium dissociation constant (K_D)

Learn more about K_D

[Click here to learn more about \$K_D\$](#)

Why choose a recombinant antibody?

Research with confidence
Consistent and reproducible results

Long-term and scalable supply
Recombinant technology

Success from the first experiment
Confirmed specificity

Ethical standards compliant
Animal-free production

Anti-Alpha SNAP antibody [EPR7372] (ab133673)

Please note: All products are "FOR RESEARCH USE ONLY. NOT FOR USE IN DIAGNOSTIC PROCEDURES"

Our Abpromise to you: Quality guaranteed and expert technical support

- Replacement or refund for products not performing as stated on the datasheet
- Valid for 12 months from date of delivery
- Response to your inquiry within 24 hours
- We provide support in Chinese, English, French, German, Japanese and Spanish
- Extensive multi-media technical resources to help you
- We investigate all quality concerns to ensure our products perform to the highest standards

If the product does not perform as described on this datasheet, we will offer a refund or replacement. For full details of the Abpromise, please visit <https://www.abcam.com/abpromise> or contact our technical team.

Terms and conditions

- Guarantee only valid for products bought direct from Abcam or one of our authorized distributors