


Product datasheet

Anti-alpha Tubulin antibody - Microtubule Marker ab15246

★★★★★ [18 Abreviews](#) [254 References](#) [3 Images](#)

Overview

Product name	Anti-alpha Tubulin antibody - Microtubule Marker
Description	Rabbit polyclonal to alpha Tubulin - Microtubule Marker
Host species	Rabbit
Specificity	Homology to both Tubulin alpha-3E chain and Tubulin alpha-4A chain
Tested applications	Suitable for: WB, IHC-P
Species reactivity	Reacts with: Human Predicted to work with: Mouse, Rat, Sheep, Rabbit, Chicken, Guinea pig, Cow, Pig, Xenopus laevis, Drosophila melanogaster, Zebrafish, Gerbil, Newt 
Immunogen	Synthetic peptide within Human alpha Tubulin aa 400 to the C-terminus. The exact sequence is proprietary. Database link: Q6PEY2
General notes	<p>This product is FOR RESEARCH USE ONLY. For commercial use, please contact partnerships@abcam.com.</p> <p>The Life Science industry has been in the grips of a reproducibility crisis for a number of years. Abcam is leading the way in addressing this with our range of recombinant monoclonal antibodies and knockout edited cell lines for gold-standard validation. Please check that this product meets your needs before purchasing.</p> <p>If you have any questions, special requirements or concerns, please send us an inquiry and/or contact our Support team ahead of purchase. Recommended alternatives for this product can be found below, along with publications, customer reviews and Q&As</p>

Properties

Form	Liquid
Storage instructions	Shipped at 4°C. Upon delivery aliquot and store at -20°C. Avoid freeze / thaw cycles.
Storage buffer	pH: 7.60 Preservative: 0.1% Sodium azide Constituents: PBS, 1% BSA
Purity	Immunogen affinity purified

Clonality	Polyclonal
Isotype	IgG

Applications

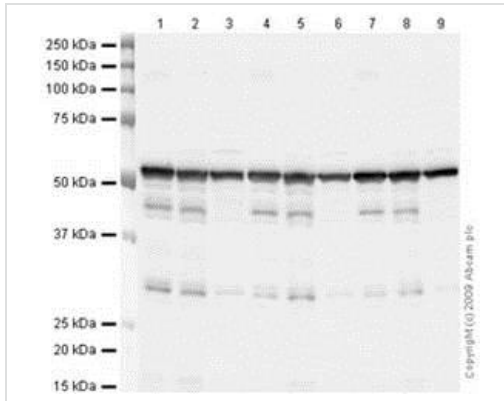
The Abpromise guarantee Our **Abpromise guarantee** covers the use of ab15246 in the following tested applications. The application notes include recommended starting dilutions; optimal dilutions/concentrations should be determined by the end user.

Application	Abreviews	Notes
WB	★★★★★ (14)	Use at an assay dependent concentration. Detects a band of approximately 55 kDa (predicted molecular weight: 50 kDa).
IHC-P	★★★★★ (1)	1/100. Perform heat mediated antigen retrieval before commencing with IHC staining protocol.

Target

Function	Tubulin is the major constituent of microtubules. It binds two moles of GTP, one at an exchangeable site on the beta chain and one at a non-exchangeable site on the alpha chain.
Sequence similarities	Belongs to the tubulin family.
Post-translational modifications	<p>Some glutamate residues at the C-terminus are polyglutamylated. This modification occurs exclusively on glutamate residues and results in polyglutamate chains on the gamma-carboxyl group. Also monoglycylated but not polyglycylated due to the absence of functional TTL10 in human. Monoglycylation is mainly limited to tubulin incorporated into axonemes (cilia and flagella) whereas glutamylation is prevalent in neuronal cells, centrioles, axonemes, and the mitotic spindle. Both modifications can coexist on the same protein on adjacent residues, and lowering glycylation levels increases polyglutamylation, and reciprocally. The precise function of such modifications is still unclear but they regulate the assembly and dynamics of axonemal microtubules.</p> <p>Acetylation of alpha chains at Lys-40 stabilizes microtubules and affects affinity and processivity of microtubule motors. This modification has a role in multiple cellular functions, ranging from cell motility, cell cycle progression or cell differentiation to intracellular trafficking and signaling.</p>
Cellular localization	Cytoplasm > cytoskeleton.

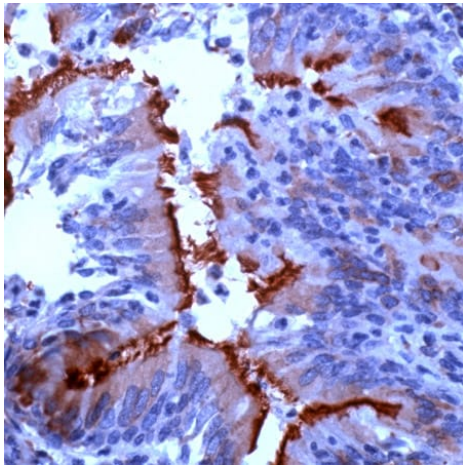
Images



Western blot - Anti-alpha Tubulin antibody -
Microtubule Marker (ab15246)

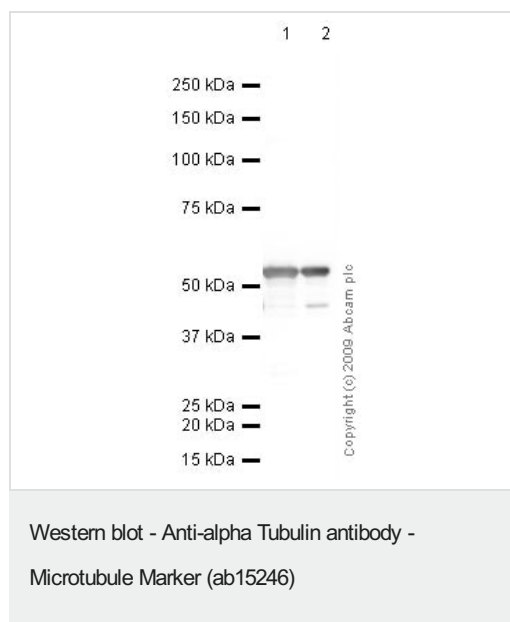
Lanes: 1, 4, 7 - SK NBE; 2, 5, 8 - TE 671; 3, 6, 9 - HeLa

Lanes: 1-3: 4°C (1 freeze/thaw); 4-6: 4°C (2 freeze/thaws); 7-9 : 4°C (4 freeze/thaws)



Immunohistochemistry (Formalin/PFA-fixed paraffin-
embedded sections) - Anti-alpha Tubulin antibody -
Microtubule Marker (ab15246)

ab15246 at 1/200 dilution, staining alpha Tubulin in Human lung
tissue section by Immunohistochemistry (Formalin/ PFA fixed
paraffin- embedded tissue sections).



All lanes : Anti-alpha Tubulin antibody - Microtubule Marker (ab15246) at 1 µg/ml

Lane 1 : SK N BE (Human neuroblastoma) Whole Cell Lysate

Lane 2 : TE 671 (Human Rhabdomyosarcoma) Whole Cell Lysate

Lysates/proteins at 10 µg per lane.

Secondary

All lanes : Goat polyclonal to Rabbit IgG - H&L - Pre-Adsorbed (HRP) at 1/3000 dilution

Predicted band size: 50 kDa

Observed band size: 55 kDa

Please note: All products are "FOR RESEARCH USE ONLY. NOT FOR USE IN DIAGNOSTIC PROCEDURES"

Our Abpromise to you: Quality guaranteed and expert technical support

- Replacement or refund for products not performing as stated on the datasheet
- Valid for 12 months from date of delivery
- Response to your inquiry within 24 hours
- We provide support in Chinese, English, French, German, Japanese and Spanish
- Extensive multi-media technical resources to help you
- We investigate all quality concerns to ensure our products perform to the highest standards

If the product does not perform as described on this datasheet, we will offer a refund or replacement. For full details of the Abpromise, please visit <https://www.abcam.com/abpromise> or contact our technical team.

Terms and conditions

- Guarantee only valid for products bought direct from Abcam or one of our authorized distributors