

Anti-Amphiregulin antibody ab180722

★★★★★ [3 Abreviews](#) [3 References](#) [3 Images](#)

Overview

Product name	Anti-Amphiregulin antibody
Description	Rabbit polyclonal to Amphiregulin
Host species	Rabbit
Tested applications	Suitable for: WB
Species reactivity	Reacts with: Mouse, Human
Immunogen	Recombinant full length protein corresponding to Human Amphiregulin aa 20-252. Mature Protein without signal peptide. Database link: P15514
Positive control	WB: MCF7, A549, HT29 and Mouse brain lysates.
General notes	<p>The Life Science industry has been in the grips of a reproducibility crisis for a number of years. Abcam is leading the way in addressing this with our range of recombinant monoclonal antibodies and knockout edited cell lines for gold-standard validation. Please check that this product meets your needs before purchasing.</p> <p>If you have any questions, special requirements or concerns, please send us an inquiry and/or contact our Support team ahead of purchase. Recommended alternatives for this product can be found below, along with publications, customer reviews and Q&As</p>

Properties

Form	Liquid
Storage instructions	Shipped at 4°C. Store at +4°C short term (1-2 weeks). Upon delivery aliquot. Store at -20°C long term. Avoid freeze / thaw cycle.
Storage buffer	pH: 7.30 Preservative: 0.02% Sodium azide Constituents: 49% PBS, 50% Glycerol
Purity	Immunogen affinity purified
Clonality	Polyclonal
Isotype	IgG

Applications

The Abpromise guarantee

Our **Abpromise guarantee** covers the use of ab180722 in the following tested applications.

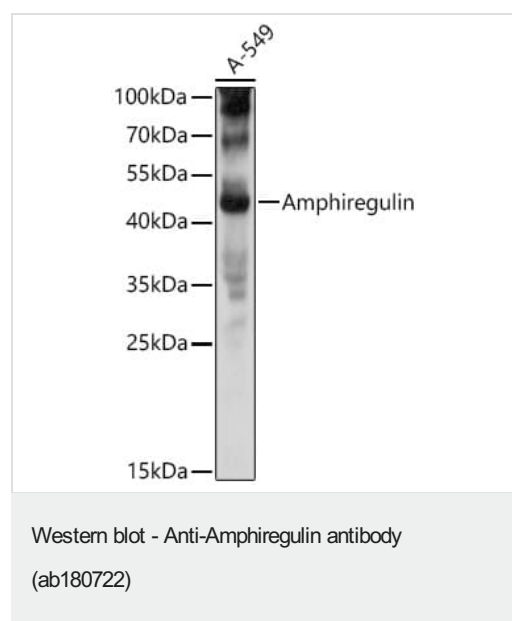
The application notes include recommended starting dilutions; optimal dilutions/concentrations should be determined by the end user.

Application	Abreviews	Notes
WB	★★★★★ (2)	1/500 - 1/2000. Predicted molecular weight: 28 kDa.

Target

Function	Bifunctional growth-modulating glycoprotein. Inhibits growth of several human carcinoma cells in culture and stimulates proliferation of human fibroblasts and certain other tumor cells.
Sequence similarities	Belongs to the amphiregulin family. Contains 1 EGF-like domain.
Cellular localization	Membrane.

Images



Anti-Amphiregulin antibody (ab180722) at 1/1000 dilution + A549
(Human lung carcinoma cell line) whole cell lysate at 25 µg

Secondary

HRP Goat Anti-Rabbit IgG (H+L) at 1/10000 dilution

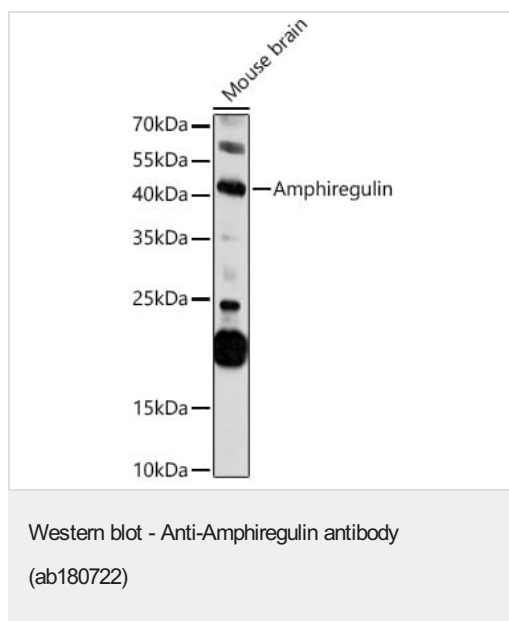
Predicted band size: 28 kDa

Observed band size: 43 kDa

Exposure time: 3 seconds

Blocking buffer: 3% nonfat dry milk in TBST.

PMID: 9642297.



Anti-Amphiregulin antibody (ab180722) at 1/1000 dilution + Mouse brain lysate at 25 µg

Secondary

HRP Goat Anti-Rabbit IgG (H+L) at 1/10000 dilution

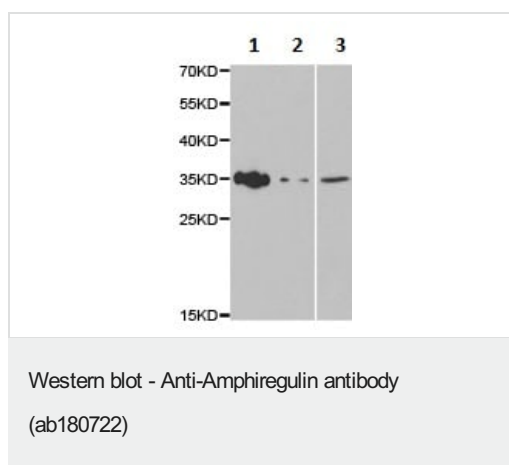
Predicted band size: 28 kDa

Observed band size: 43 kDa

Exposure time: 300 seconds

Blocking buffer: 3% nonfat dry milk in TBST.

PMID: 9642297.



All lanes : Anti-Amphiregulin antibody (ab180722) at 1/500 dilution

Lane 1 : MCF7 cell extracts

Lane 2 : A549 cell extracts

Lane 3 : HT29 cell extracts

Predicted band size: 28 kDa

Please note: All products are "FOR RESEARCH USE ONLY. NOT FOR USE IN DIAGNOSTIC PROCEDURES"

Our Promise to you: Quality guaranteed and expert technical support

- Replacement or refund for products not performing as stated on the datasheet
- Valid for 12 months from date of delivery

- Response to your inquiry within 24 hours
- We provide support in Chinese, English, French, German, Japanese and Spanish
- Extensive multi-media technical resources to help you
- We investigate all quality concerns to ensure our products perform to the highest standards

If the product does not perform as described on this datasheet, we will offer a refund or replacement. For full details of the Abpromise, please visit <https://www.abcam.com/abpromise> or contact our technical team.

Terms and conditions

- Guarantee only valid for products bought direct from Abcam or one of our authorized distributors