

Product datasheet

Anti-Angiotensin II Type 1 Receptor antibody ab124505

★ ★ ★ ★ ★ [2 Abreviews](#) [26 References](#) [4 Images](#)

Overview

Product name	Anti-Angiotensin II Type 1 Receptor antibody
Description	Rabbit polyclonal to Angiotensin II Type 1 Receptor
Host species	Rabbit
Specificity	ab124505 is specific for Angiotensin II Type 1 Receptor (AGTR1) and will not cross-react with AGTR2.
Tested applications	Suitable for: ICC/IF, WB, IHC-P
Species reactivity	Reacts with: Mouse
Immunogen	Synthetic peptide corresponding to Human Angiotensin II Type 1 Receptor (internal sequence). Database link: P30556 (Peptide available as ab176148)
Positive control	Mouse kidney tissue lysate; Mouse kidney tissue, mouse kidney cells.
General notes	<p>The Life Science industry has been in the grips of a reproducibility crisis for a number of years. Abcam is leading the way in addressing this with our range of recombinant monoclonal antibodies and knockout edited cell lines for gold-standard validation. Please check that this product meets your needs before purchasing.</p> <p>If you have any questions, special requirements or concerns, please send us an inquiry and/or contact our Support team ahead of purchase. Recommended alternatives for this product can be found below, along with publications, customer reviews and Q&As</p>

Properties

Form	Liquid
Storage instructions	Shipped at 4°C. Store at +4°C short term (1-2 weeks). Upon delivery aliquot. Store at -20°C. Avoid freeze / thaw cycle.
Storage buffer	pH: 7.2 Preservative: 0.02% Sodium azide Constituent: 99% PBS
Purity	Immunogen affinity purified
Clonality	Polyclonal
Isotype	IgG

Applications

The Abpromise guarantee

Our **Abpromise guarantee** covers the use of ab124505 in the following tested applications.

The application notes include recommended starting dilutions; optimal dilutions/concentrations should be determined by the end user.

Application	Abreviews	Notes
ICC/IF		Use a concentration of 20 µg/ml.
WB	★☆☆☆☆ (1)	Use a concentration of 1 - 2 µg/ml. Predicted molecular weight: 41 kDa. Can be blocked with Angiotensin II Type 1 Receptor peptide (ab176148) .
IHC-P		Use a concentration of 2.5 µg/ml.

Target

Function

Receptor for angiotensin II. Mediates its action by association with G proteins that activate a phosphatidylinositol-calcium second messenger system.

Tissue specificity

Liver, lung, adrenal and adrenocortical adenomas.

Involvement in disease

Defects in AGTR1 are a cause of renal tubular dysgenesis (RTD) [MIM:267430]. RTD is an autosomal recessive severe disorder of renal tubular development characterized by persistent fetal anuria and perinatal death, probably due to pulmonary hypoplasia from early-onset oligohydramnios (the Potter phenotype).

Sequence similarities

Belongs to the G-protein coupled receptor 1 family.

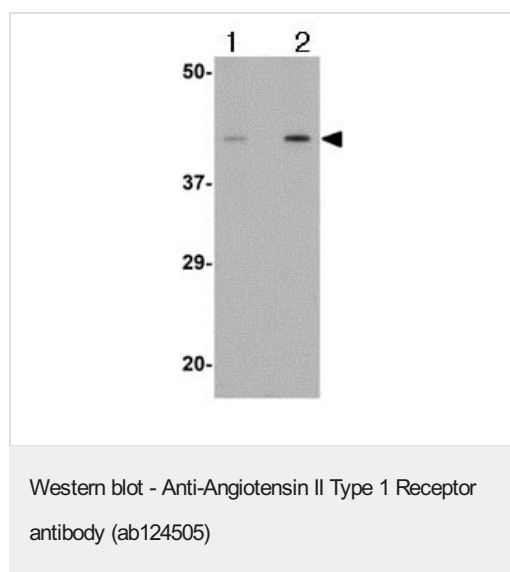
Post-translational modifications

C-terminal Ser or Thr residues may be phosphorylated.

Cellular localization

Cell membrane.

Images



Lane 1 : Anti-Angiotensin II Type 1 Receptor antibody (ab124505) at 1 µg/ml

Lane 2 : Anti-Angiotensin II Type 1 Receptor antibody (ab124505) at 2 µg/ml

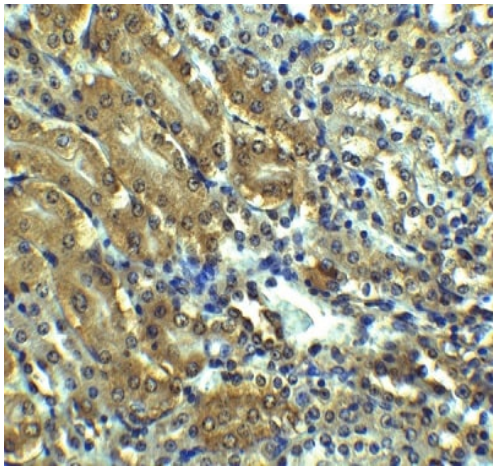
All lanes : Mouse kidney tissue lysate

Lysates/proteins at 15 µg per lane.

Predicted band size: 41 kDa

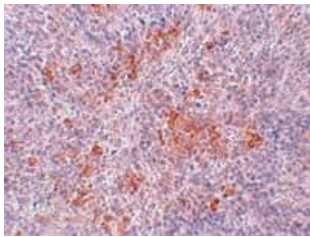
Immunocytochemistry/ Immunofluorescence - Anti-Angiotensin II Type 1 Receptor antibody (ab124505)

Immunofluorescence of AGTR1 in mouse kidney cells using ab124505 at 20 $\mu\text{g/ml}$.



Immunohistochemical analysis of mouse kidney tissue section labelling Angiotensin II Type 1 Receptor with ab124505, at 2.5 $\mu\text{g/ml}$.

Immunohistochemistry (Formalin/PFA-fixed paraffin-embedded sections) - Anti-Angiotensin II Type 1 Receptor antibody (ab124505)



ab124505, at 2.5 $\mu\text{g/ml}$, staining Angiotensin II Type 1 Receptor in paraffin-embedded Mouse kidney tissue by Immunohistochemistry.

Immunohistochemistry (Formalin/PFA-fixed paraffin-embedded sections) - Anti-Angiotensin II Type 1 Receptor antibody (ab124505)

Please note: All products are "FOR RESEARCH USE ONLY. NOT FOR USE IN DIAGNOSTIC PROCEDURES"

Our Abpromise to you: Quality guaranteed and expert technical support

- Replacement or refund for products not performing as stated on the datasheet
- Valid for 12 months from date of delivery
- Response to your inquiry within 24 hours
- We provide support in Chinese, English, French, German, Japanese and Spanish
- Extensive multi-media technical resources to help you
- We investigate all quality concerns to ensure our products perform to the highest standards

If the product does not perform as described on this datasheet, we will offer a refund or replacement. For full details of the Abpromise, please visit <https://www.abcam.com/abpromise> or contact our technical team.

Terms and conditions

- Guarantee only valid for products bought direct from Abcam or one of our authorized distributors