

Anti-Angiotensinogen antibody ab97381

5 Images

Overview

Product name	Anti-Angiotensinogen antibody
Description	Rabbit polyclonal to Angiotensinogen
Host species	Rabbit
Tested applications	Suitable for: ICC/IF, WB, IHC-P
Species reactivity	Reacts with: Mouse, Rat, Human
Immunogen	Recombinant fragment corresponding to Human Angiotensinogen aa 1-446. Sequence:

MRKRAPQSEMAPAGVSLRATILCLLAWAGLAAGDRVYIHP
FHLVIHNEST
CEQLAKANAGKPKDPTFIPAPIQAKTSPVDEKALQDQLVL
VAAKLDTEDEK
LRAAMVGMLANFLGFRIYGMHSELWGVVHGATVLSPTAV
FGTLASLYLGA
LDHTADRLQAILGVPWKDKNCTSRDLAHKVL SALQAVQG
LLVAQGRADSQ
AQLLLSTVVGFTAPGLHLKQPFVQGLALYTPVVLPRSLD
FTELDVAAEK
IDRFMQAVTGWKTGCSLMGASVDSTLAFNTYVHFQGKMK
GFSLLAEPQEF
WVDNSTSVSVPMLSGMGTFQHWSDIQDNFSVTQVPFTE
SACLLLIQPHYA
SDLDKVEGLTFQQNSLNWMKKLSPRTHLTMPQLVLQGSY
DLQDLLAQAE
LPAILHTELNQLKLSNDRIRVGEVLNSIFFELEADEREPTES
TQQL

Database link: [P01019](#)

 [Run BLAST with](#)

 [Run BLAST with](#)

Positive control	WB: HepG2 lysate. Mouse and Rat plasma. IHC-P: Hepatocellular carcinoma Huh7 xenograft. ICC/IF: HepG2 cells.
-------------------------	---

General notes	The Life Science industry has been in the grips of a reproducibility crisis for a number of years. Abcam is leading the way in addressing this with our range of recombinant monoclonal antibodies and knockout edited cell lines for gold-standard validation. Please check that this product meets your needs before purchasing.
----------------------	--

If you have any questions, special requirements or concerns, please send us an inquiry and/or contact our Support team ahead of purchase. Recommended alternatives for this product can be found below, along with publications, customer reviews and Q&As

Properties

Form	Liquid
Storage instructions	Shipped at 4°C. Store at +4°C short term (1-2 weeks). Upon delivery aliquot. Store at -20°C or -80°C. Avoid freeze / thaw cycle.
Storage buffer	pH: 7.00 Preservative: 0.01% Thimerosal (merthiolate) Constituents: 1.21% Tris, 0.75% Glycine, 10% Glycerol (glycerin, glycerine)
Purity	Immunogen affinity purified
Clonality	Polyclonal
Isotype	IgG

Applications

The Abpromise guarantee Our **Abpromise guarantee** covers the use of ab97381 in the following tested applications. The application notes include recommended starting dilutions; optimal dilutions/concentrations should be determined by the end user.

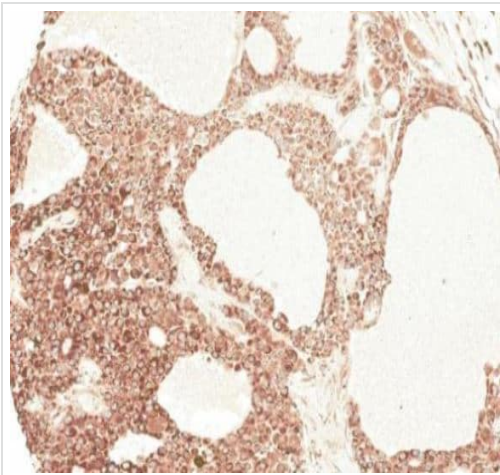
Application	Abreviews	Notes
ICC/IF		1/100 - 1/1000.
WB		1/500 - 1/3000. Predicted molecular weight: 53 kDa.
IHC-P		1/100 - 1/250.

Target

Function Essential component of the renin-angiotensin system (RAS), a potent regulator of blood pressure, body fluid and electrolyte homeostasis. In response to lowered blood pressure, the enzyme renin cleaves angiotensinogen to produce angiotensin-1 (angiotensin 1-10). Angiotensin-1 is a substrate of ACE (angiotensin converting enzyme) that removes a dipeptide to yield the physiologically active peptide angiotensin-2 (angiotensin 1-8). Angiotensin-1 and angiotensin-2 can be further processed to generate angiotensin-3 (angiotensin 2-8), angiotensin-4 (angiotensin 3-8). Angiotensin 1-7 is cleaved from angiotensin-2 by ACE2 or from angiotensin-1 by MME (neprilysin). Angiotensin 1-9 is cleaved from angiotensin-1 by ACE2. Angiotensin-2 acts directly on vascular smooth muscle as a potent vasoconstrictor, affects cardiac contractility and heart rate through its action on the sympathetic nervous system, and alters renal sodium and water absorption through its ability to stimulate the zona glomerulosa cells of the adrenal cortex to synthesize and secrete aldosterone. Angiotensin-3 stimulates aldosterone release. Angiotensin 1-7 is a ligand for the G-protein coupled receptor MAS1 (By similarity). Has vasodilator and antidiuretic effects (By similarity). Has an antithrombotic effect that involves

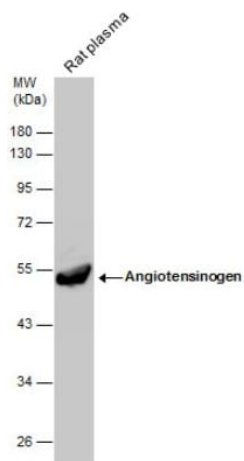
	MAS1-mediated release of nitric oxide from platelets.
Tissue specificity	Expressed by the liver and secreted in plasma.
Involvement in disease	<p>Genetic variations in AGT are a cause of susceptibility to essential hypertension (EHT) [MIM:145500]. Essential hypertension is a condition in which blood pressure is consistently higher than normal with no identifiable cause.</p> <p>Defects in AGT are a cause of renal tubular dysgenesis (RTD) [MIM:267430]. RTD is an autosomal recessive severe disorder of renal tubular development characterized by persistent fetal anuria and perinatal death, probably due to pulmonary hypoplasia from early-onset oligohydramnios (the Potter phenotype).</p>
Sequence similarities	Belongs to the serpin family.
Post-translational modifications	<p>Beta-decarboxylation of Asp-34 in angiotensin-2, by mononuclear leukocytes produces alanine.</p> <p>The resulting peptide form, angiotensin-A, has the same affinity for the AT1 receptor as angiotensin-2, but a higher affinity for the AT2 receptor.</p>
Cellular localization	Secreted.

Images



Immunohistochemical analysis of paraffin-embedded Hepatocellular carcinoma Huh7, using Angiotensinogen antibody (ab97381) at 1/100 dilution.

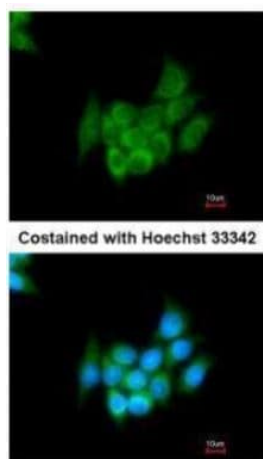
Immunohistochemistry (Formalin/PFA-fixed paraffin-embedded sections) - Anti-Angiotensinogen antibody (ab97381)



Western blot - Anti-Angiotensinogen antibody (ab97381)

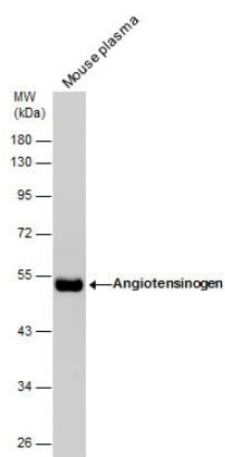
Anti-Angiotensinogen antibody (ab97381) at 1/1000 dilution + Rat plasma at 50 µg

Predicted band size: 53 kDa



Immunocytochemistry/ Immunofluorescence - Anti-Angiotensinogen antibody (ab97381)

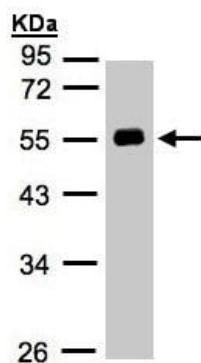
HepG2 cells stained for Angiotensinogen using ab97381 at 1/200 dilution in ICC/IF.



Western blot - Anti-Angiotensinogen antibody (ab97381)

Anti-Angiotensinogen antibody (ab97381) at 1/1000 dilution + Mouse plasma at 50 µg

Predicted band size: 53 kDa



Western blot - Anti-Angiotensinogen antibody
(ab97381)

Anti-Angiotensinogen antibody (ab97381) at 1/1000 dilution +
HepG2 whole cell lysate at 30 µg

Predicted band size: 53 kDa

10% SDS PAGE

Please note: All products are "FOR RESEARCH USE ONLY. NOT FOR USE IN DIAGNOSTIC PROCEDURES"

Our Abpromise to you: Quality guaranteed and expert technical support

- Replacement or refund for products not performing as stated on the datasheet
- Valid for 12 months from date of delivery
- Response to your inquiry within 24 hours
- We provide support in Chinese, English, French, German, Japanese and Spanish
- Extensive multi-media technical resources to help you
- We investigate all quality concerns to ensure our products perform to the highest standards

If the product does not perform as described on this datasheet, we will offer a refund or replacement. For full details of the Abpromise, please visit <https://www.abcam.com/abpromise> or contact our technical team.

Terms and conditions

- Guarantee only valid for products bought direct from Abcam or one of our authorized distributors