


Product datasheet

Anti-ANKRD1 antibody ab64963

[3 References](#) [1 Image](#)

Overview

Product name	Anti-ANKRD1 antibody
Description	Rabbit polyclonal to ANKRD1
Host species	Rabbit
Tested applications	Suitable for: WB
Species reactivity	Reacts with: Human Predicted to work with: Mouse 
Immunogen	Synthetic peptide (Human) from an internal region
General notes	<p>The Life Science industry has been in the grips of a reproducibility crisis for a number of years. Abcam is leading the way in addressing this with our range of recombinant monoclonal antibodies and knockout edited cell lines for gold-standard validation. Please check that this product meets your needs before purchasing.</p> <p>If you have any questions, special requirements or concerns, please send us an inquiry and/or contact our Support team ahead of purchase. Recommended alternatives for this product can be found below, along with publications, customer reviews and Q&As</p>

Properties

Form	Liquid
Storage instructions	Shipped at 4°C. Store at -20°C. Stable for 12 months at -20°C.
Storage buffer	pH: 7.40 Preservative: 0.02% Sodium azide Constituents: PBS, 50% Glycerol (glycerin, glycerine), 0.87% Sodium chloride
Purity	Immunogen affinity purified
Clonality	Polyclonal
Isotype	IgG

Applications

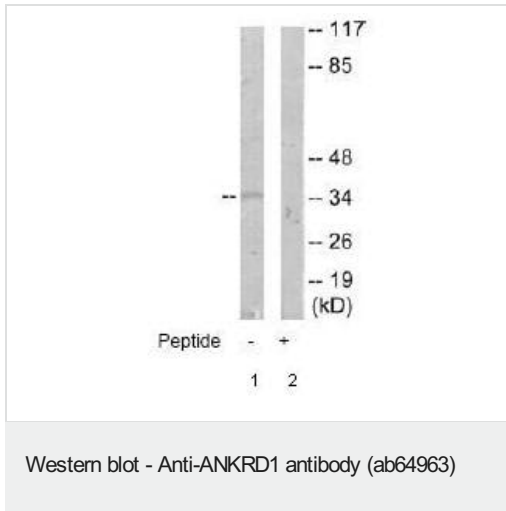
The Abpromise guarantee Our **Abpromise guarantee** covers the use of ab64963 in the following tested applications. The application notes include recommended starting dilutions; optimal dilutions/concentrations should be determined by the end user.

Application	Abreviews	Notes
WB		1/500 - 1/1000. Detects a band of approximately 36 kDa (predicted molecular weight: 36 kDa).

Target

Function	May play an important role in endothelial cell activation. May act as a nuclear transcription factor that negatively regulates the expression of cardiac genes. Induction seems to be correlated with apoptotic cell death in hepatoma cells.
Tissue specificity	Mainly expressed in activated vascular endothelial cells. To a lower extent, also expressed in hepatoma cells.
Involvement in disease	Defects in ANKRD1 may be a cause of total anomalous pulmonary venous return (TAPVR) [MIM:106700]. TAPVR is a rare congenital heart disease (CHD) in which the pulmonary veins fail to connect to the left atrium during cardiac development, draining instead into either the right atrium or one of its venous tributaries. This disease accounts for 1.5% of all CHDs and has a prevalence of approximately 1 out of 15'000 live births.
Sequence similarities	Contains 5 ANK repeats.
Cellular localization	Nucleus.

Images



All lanes : Anti-ANKRD1 antibody (ab64963) at 1/500 dilution

Lane 1 : COLO205 cell extract

Lane 2 : COLO205 cell extract with immunising peptide at 5 µg

Lysates/proteins at 5 µg per lane.

Predicted band size: 36 kDa

Observed band size: 36 kDa

Please note: All products are "FOR RESEARCH USE ONLY. NOT FOR USE IN DIAGNOSTIC PROCEDURES"

Our Abpromise to you: Quality guaranteed and expert technical support

- Replacement or refund for products not performing as stated on the datasheet
- Valid for 12 months from date of delivery
- Response to your inquiry within 24 hours
- We provide support in Chinese, English, French, German, Japanese and Spanish

- Extensive multi-media technical resources to help you
- We investigate all quality concerns to ensure our products perform to the highest standards

If the product does not perform as described on this datasheet, we will offer a refund or replacement. For full details of the Abpromise, please visit <https://www.abcam.com/abpromise> or contact our technical team.

Terms and conditions

- Guarantee only valid for products bought direct from Abcam or one of our authorized distributors