


## Product datasheet

### Anti-Annexin-6/ANXA6 antibody ab31026

★★★★★ [5 Abreviews](#) [16 References](#) [4 Images](#)

#### Overview

Product name	Anti-Annexin-6/ANXA6 antibody
Description	Rabbit polyclonal to Annexin-6/ANXA6
Host species	Rabbit
Tested applications	<b>Suitable for:</b> WB, IHC-P
Species reactivity	<b>Reacts with:</b> Human <b>Predicted to work with:</b> Mouse, Rat 
Immunogen	Synthetic peptide within Human Annexin-6/ANXA6 aa 1-100. The exact sequence is proprietary. Database link: <a href="#">P08133</a>
Positive control	IHC-P: Human L8 cells. Liver.
General notes	<b>This product is FOR RESEARCH USE ONLY. For commercial use, please contact <a href="mailto:partnerships@abcam.com">partnerships@abcam.com</a>.</b>  The Life Science industry has been in the grips of a reproducibility crisis for a number of years. Abcam is leading the way in addressing this with our range of recombinant monoclonal antibodies and knockout edited cell lines for gold-standard validation. Please check that this product meets your needs before purchasing.  If you have any questions, special requirements or concerns, please send us an inquiry and/or contact our Support team ahead of purchase. Recommended alternatives for this product can be found below, along with publications, customer reviews and Q&As

#### Properties

Form	Liquid
Storage instructions	Shipped at 4°C. Upon delivery aliquot and store at -20°C. Avoid freeze / thaw cycles.
Storage buffer	pH: 7.60 Preservative: 0.1% Sodium azide Constituents: PBS, 1% BSA
Purity	Immunogen affinity purified
Clonality	Polyclonal
Isotype	IgG

## Applications

### The Abpromise guarantee

Our **Abpromise guarantee** covers the use of ab31026 in the following tested applications.

The application notes include recommended starting dilutions; optimal dilutions/concentrations should be determined by the end user.

Application	Abreviews	Notes
WB	★★★★★ (3)	Use at an assay dependent concentration. Detects a band of approximately 76 kDa (predicted molecular weight: 76 kDa).
IHC-P		1/50. 1/50 for 30 min at room temperature. Requires boiling of tissue sections in 10mM citrate buffer, pH 6.0 for 10 minutes followed by cooling at room temperature for 20 minutes.

## Target

### Function

May associate with CD21. May regulate the release of Ca(2+) from intracellular stores.

### Sequence similarities

Belongs to the annexin family.  
Contains 8 annexin repeats.

### Domain

A pair of annexin repeats may form one binding site for calcium and phospholipid.

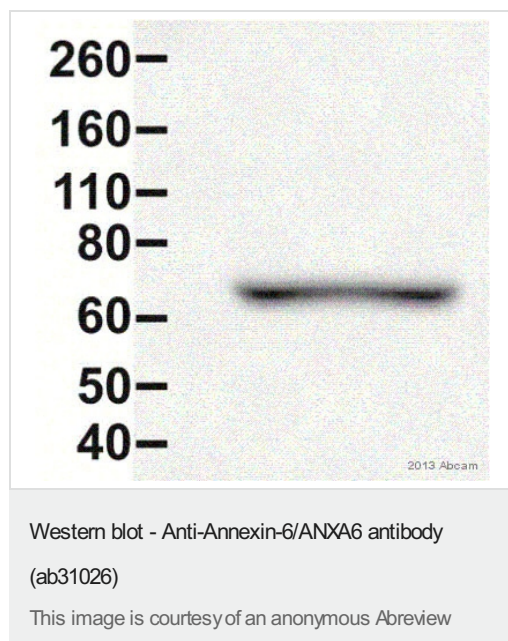
### Post-translational modifications

Phosphorylated in response to growth factor stimulation.

### Cellular localization

Cytoplasm. Melanosome. Identified by mass spectrometry in melanosome fractions from stage I to stage IV.

## Images



Anti-Annexin-6/ANXA6 antibody (ab31026) at 1/500 dilution +  
Mouse heart tissue lysate at 50 µg

### Secondary

HRP-conjugated Goat anti-rabbit IgG at 1/7500 dilution

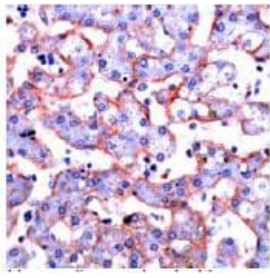
Developed using the ECL technique.

Performed under reducing conditions.

**Predicted band size:** 76 kDa

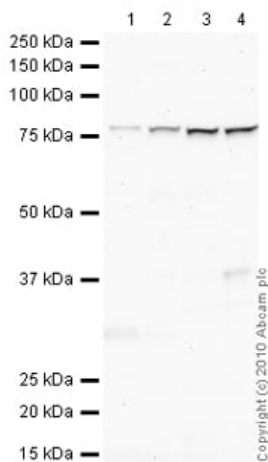
**Observed band size:** 76 kDa

**Exposure time:** 5 seconds



Immunohistochemistry (Formalin/PFA-fixed paraffin-embedded sections) - Anti-Annexin-6/ANXA6 antibody (ab31026)

Ab31026, at a dilution of 1/50, staining formalin fixed paraffin embedded Annexin-6/ANXA6 in human liver tissue by Immunohistochemistry.



Western blot - Anti-Annexin-6/ANXA6 antibody (ab31026)

**All lanes :** Anti-Annexin-6/ANXA6 antibody (ab31026) at 1 µg/ml

**Lane 1 :** Human placenta tissue lysate - total protein ([ab29745](#))

**Lane 2 :** Human kidney tissue lysate - total protein ([ab30203](#))

**Lane 3 :** JEG-3 (Human placental choriocarcinoma cell line) Whole Cell Lysate

**Lane 4 :** A498 (Human Kidney Carcinoma) Whole Cell Lysate

Lysates/proteins at 10 µg per lane.

### Secondary

**All lanes :** Goat Anti-Rabbit IgG H&L (HRP) preadsorbed ([ab97080](#)) at 1/5000 dilution

Developed using the ECL technique.

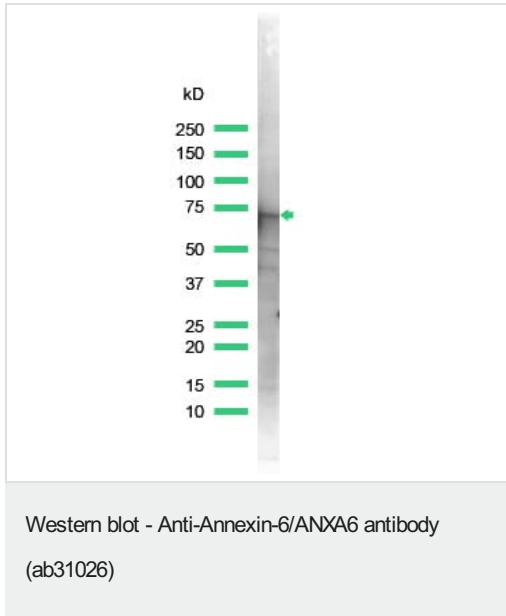
Performed under reducing conditions.

**Predicted band size:** 76 kDa

**Observed band size:** 76 kDa

**Additional bands at:** 37 kDa. We are unsure as to the identity of these extra bands.

**Exposure time:** 2 minutes



Anti-Annexin-6/ANXA6 antibody (ab31026) at 1/25 dilution + lysate prepared from 293 cells

**Predicted band size:** 76 kDa

**Observed band size:** 70 kDa

**Please note:** All products are "FOR RESEARCH USE ONLY. NOT FOR USE IN DIAGNOSTIC PROCEDURES"

### Our Abpromise to you: Quality guaranteed and expert technical support

---

- Replacement or refund for products not performing as stated on the datasheet
- Valid for 12 months from date of delivery
- Response to your inquiry within 24 hours
- We provide support in Chinese, English, French, German, Japanese and Spanish
- Extensive multi-media technical resources to help you
- We investigate all quality concerns to ensure our products perform to the highest standards

If the product does not perform as described on this datasheet, we will offer a refund or replacement. For full details of the Abpromise, please visit <https://www.abcam.com/abpromise> or contact our technical team.

### Terms and conditions

---

- Guarantee only valid for products bought direct from Abcam or one of our authorized distributors