

Product datasheet

Anti-Annexin-6/ANXA6 antibody [EPR19536] ab201024

KO VALIDATED Recombinant RabMAB

★★★★★ [1 Abreviews](#) [10 Images](#)

Overview

Product name	Anti-Annexin-6/ANXA6 antibody [EPR19536]
Description	Rabbit monoclonal [EPR19536] to Annexin-6/ANXA6
Host species	Rabbit
Tested applications	Suitable for: WB, ICC/IF, IP, IHC-P, Flow Cyt (Intra)
Species reactivity	Reacts with: Human
Immunogen	This product was produced with the following immunogens: Synthetic peptide. This information is proprietary to Abcam and/or its suppliers. Synthetic peptide. This information is proprietary to Abcam and/or its suppliers.
Positive control	WB: Human fetal liver, fetal heart, fetal kidney, spleen and skeletal muscle lysates; Jurkat, Raji, HeLa and HepG2 whole cell lysates. IHC-P: Human tonsil and pancreas tissues. ICC/IF: HepG2 and Raji cells. Flow Cyt (intra): HepG2 cells. IP: Human fetal liver whole cell lysate.
General notes	This product is a recombinant monoclonal antibody, which offers several advantages including: <ul style="list-style-type: none">- High batch-to-batch consistency and reproducibility- Improved sensitivity and specificity- Long-term security of supply- Animal-free production For more information see here . Our RabMAB [®] technology is a patented hybridoma-based technology for making rabbit monoclonal antibodies. For details on our patents, please refer to RabMAB[®] patents .

Properties

Form	Liquid
Storage instructions	Shipped at 4°C. Store at +4°C short term (1-2 weeks). Upon delivery aliquot. Store at -20°C long term. Avoid freeze / thaw cycle.
Storage buffer	pH: 7.2 Preservative: 0.01% Sodium azide Constituents: 59% PBS, 40% Glycerol (glycerin, glycerine), 0.05% BSA
Purity	Protein A purified

Clonality	Monoclonal
Clone number	EPR19536
Isotype	IgG

Applications

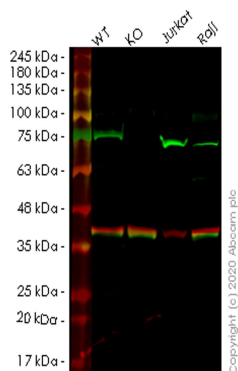
The Abpromise guarantee Our **Abpromise guarantee** covers the use of ab201024 in the following tested applications. The application notes include recommended starting dilutions; optimal dilutions/concentrations should be determined by the end user.

Application	Abreviews	Notes
WB	★★★★★ (1)	1/1000. Detects a band of approximately 72 kDa (predicted molecular weight: 76 kDa).
ICC/IF		1/500.
IP		1/30.
IHC-P		1/8000. Perform heat mediated antigen retrieval with Tris/EDTA buffer pH 9.0 before commencing with IHC staining protocol.
Flow Cyt (Intra)		1/600.

Target

Function	May associate with CD21. May regulate the release of Ca(2+) from intracellular stores.
Sequence similarities	Belongs to the annexin family. Contains 8 annexin repeats.
Domain	A pair of annexin repeats may form one binding site for calcium and phospholipid.
Post-translational modifications	Phosphorylated in response to growth factor stimulation.
Cellular localization	Cytoplasm. Melanosome. Identified by mass spectrometry in melanosome fractions from stage I to stage IV.

Images



Western blot - Anti-Annexin-6/ANXA6 antibody [EPR19536] (ab201024)

All lanes : Anti-Annexin-6/ANXA6 antibody [EPR19536] (ab201024) at 1/1000 dilution

Lane 1 : Wild-type HeLa cell lysate

Lane 2 : ANXA6 knockout HeLa cell lysate

Lane 3 : Jurkat cell lysate

Lane 4 : Raji cell lysate

Lysates/proteins at 20 µg per lane.

Secondary

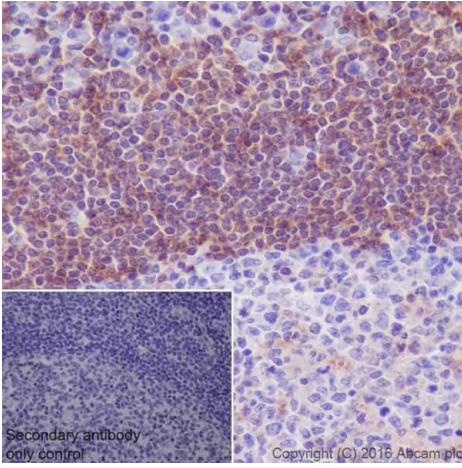
All lanes : Goat anti-Rabbit IgG H&L (IRDye® 800CW) preadsorbed ([ab216773](#)) at 1/10000 dilution

Predicted band size: 76 kDa

Observed band size: 75 kDa

Lanes 1-4: Merged signal (red and green). Green - ab201024 observed at 75 kDa. Red - loading control [ab8245](#) observed at 36 kDa.

ab201024 Anti-Annexin-6/ANXA6 antibody [EPR19536] was shown to specifically react with Annexin-6/ANXA6 in wild-type HeLa cells. Loss of signal was observed when knockout cell line [ab265677](#) (knockout cell lysate [ab257351](#)) was used. Wild-type and Annexin-6/ANXA6 knockout samples were subjected to SDS-PAGE. ab201024 and Anti-GAPDH antibody [6C5] - Loading Control ([ab8245](#)) were incubated at room temperature for 2.5 hours at 1 in 1000 dilution and 1 in 20000 dilution respectively. Blots were developed with Goat anti-Rabbit IgG H&L (IRDye® 800CW) preadsorbed ([ab216773](#)) and Goat anti-Mouse IgG H&L (IRDye® 680RD) preadsorbed ([ab216776](#)) secondary antibodies at 1 in 20000 dilution for 1 hour at room temperature before imaging.



Immunohistochemistry (Formalin/PFA-fixed paraffin-embedded sections) - Anti-Annexin-6/ANXA6 antibody [EPR19536] (ab201024)

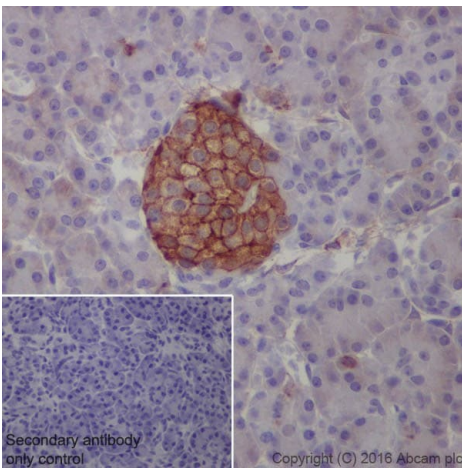
Immunohistochemical analysis of paraffin-embedded Human tonsil tissue labeling Annexin-6/ANXA6 with ab201024 at 1/8000 dilution, followed by Goat Anti-Rabbit IgG H&L (HRP) ([ab97051](#)) at 1/500 dilution.

Cytoplasm staining on Human tonsil is observed.

Counter stained with Hematoxylin.

Secondary antibody only control: Used PBS instead of primary antibody, secondary antibody is [ab97051](#) at 1/500 dilution.

Perform heat mediated antigen retrieval with Tris/EDTA buffer pH 9.0 before commencing with IHC staining protocol.



Immunohistochemistry (Formalin/PFA-fixed paraffin-embedded sections) - Anti-Annexin-6/ANXA6 antibody [EPR19536] (ab201024)

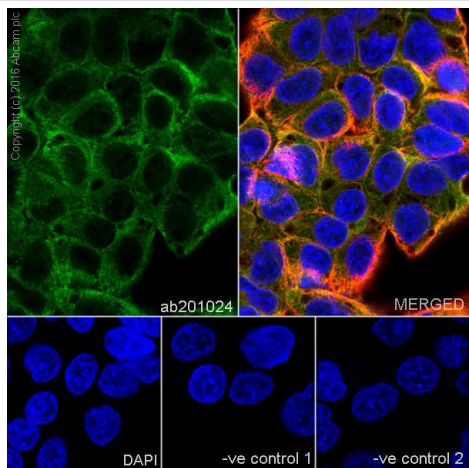
Immunohistochemical analysis of paraffin-embedded Human pancreas tissue labeling Annexin-6/ANXA6 with ab201024 at 1/8000 dilution, followed by Goat Anti-Rabbit IgG H&L (HRP) ([ab97051](#)) at 1/500 dilution.

Cytoplasm and membrane staining on the Human pancreas islet is observed.

Counter stained with Hematoxylin.

Secondary antibody only control: Used PBS instead of primary antibody, secondary antibody is [ab97051](#) at 1/500 dilution.

Perform heat mediated antigen retrieval with Tris/EDTA buffer pH 9.0 before commencing with IHC staining protocol.



Immunocytochemistry/ Immunofluorescence - Anti-Annexin-6/ANXA6 antibody [EPR19536] (ab201024)

Immunofluorescent analysis of 4% paraformaldehyde-fixed, 0.1% Triton X-100 permeabilized HepG2 (Human liver hepatocellular carcinoma cell line) cells labeling Annexin-6/ANXA6 with ab201024 at 1/500 dilution, followed by Goat Anti-Rabbit IgG (Alexa Fluor® 488) (**ab150077**) secondary antibody at 1/1000 dilution (green).

Confocal image showing cytoplasmic staining on HepG2 cells.

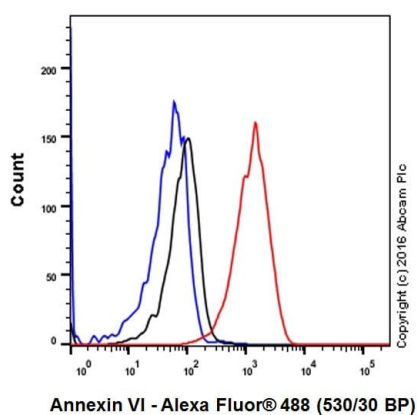
The nuclear counterstain is DAPI (blue).

Tubulin is detected with Anti-alpha Tubulin antibody [DM1A] - Loading Control (**ab7291**) at 1/1000 dilution and Goat Anti-Mouse IgG H&L (Alexa Fluor® 594) preadsorbed (**ab150120**) at 1/1000 dilution (red).

The negative controls are as follows:-

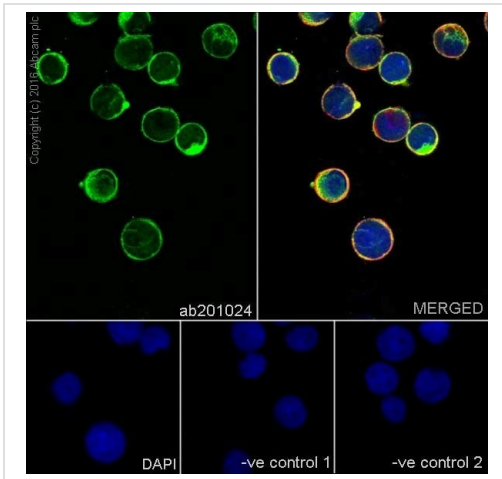
-ve control 1: ab201024 at 1/500 dilution followed by **ab150120** at 1/1000 dilution.

-ve control 2: **ab7291** at 1/1000 dilution followed by **ab150077** at 1/1000 dilution.



Flow Cytometry (Intracellular) - Anti-Annexin-6/ANXA6 antibody [EPR19536] (ab201024)

Intracellular flow cytometric analysis of 4% paraformaldehyde-fixed HepG2 (Human liver hepatocellular carcinoma cell line) cells labeling Annexin-6/ANXA6 with ab201024 at 1/600 dilution (red) compared with a a Rabbit IgG, monoclonal [EPR25A] - Isotype Control (**ab172730**) (black) and an unlabelled control (cells without incubation with primary antibody and secondary antibody) (blue). Goat anti Rabbit IgG (Alexa Fluor® 488) at 1/2000 dilution was used as the secondary antibody.



Immunocytochemistry/ Immunofluorescence - Anti-Annexin-6/ANXA6 antibody [EPR19536] (ab201024)

Immunofluorescent analysis of 4% paraformaldehyde-fixed, 0.1% Triton X-100 permeabilized Raji (Human Burkitt's lymphoma cell line) cells labeling Annexin-6/ANXA6 with ab201024 at 1/500 dilution, followed by Goat Anti-Rabbit IgG (Alexa Fluor® 488) (**ab150077**) secondary antibody at 1/1000 dilution (green).

Confocal image showing cytoplasmic staining on Raji cells.

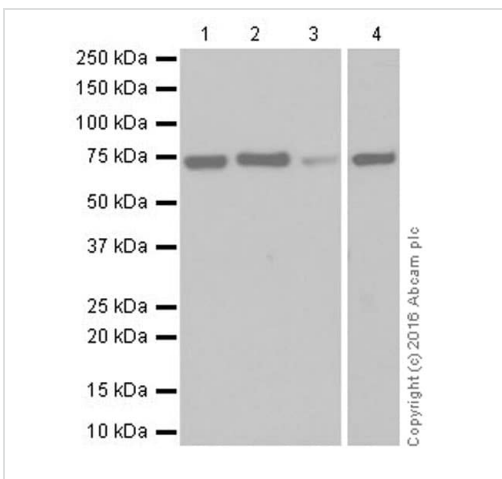
The nuclear counterstain is DAPI (blue).

Tubulin is detected with Anti-alpha Tubulin antibody [DM1A] - Loading Control (**ab7291**) at 1/1000 dilution and Goat Anti-Mouse IgG H&L (Alexa Fluor® 594) preadsorbed (**ab150120**) at 1/1000 dilution (red).

The negative controls are as follows:-

-ve control 1: ab201024 at 1/500 dilution followed by **ab150120** at 1/1000 dilution.

-ve control 2: **ab7291** at 1/1000 dilution followed by **ab150077** at 1/1000 dilution.



Western blot - Anti-Annexin-6/ANXA6 antibody [EPR19536] (ab201024)

All lanes : Anti-Annexin-6/ANXA6 antibody [EPR19536] (ab201024) at 1/1000 dilution

Lane 1 : Human fetal liver lysate

Lane 2 : Human fetal heart lysate

Lane 3 : Human fetal kidney lysate

Lane 4 : Human spleen lysate

Lysates/proteins at 10 µg per lane.

Secondary

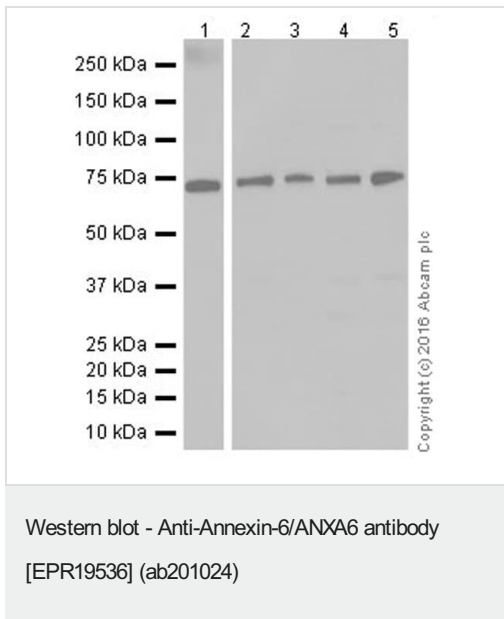
All lanes : Goat Anti-Rabbit IgG Peroxidase Conjugate, specific to the non-reduced form of IgG at 1/10000 dilution

Predicted band size: 76 kDa

Observed band size: 72 kDa

Blocking/Dilution buffer: 5% NFD/MTBST.

Exposure time: Lane 1,2 and 3: 5 seconds; Lane 4: 30 seconds.



All lanes : Anti-Annexin-6/ANXA6 antibody [EPR19536] (ab201024) at 1/5000 dilution

Lane 1 : Human skeletal muscle lysate

Lane 2 : Jurkat (Human T cell leukemia cell line from peripheral blood) whole cell lysate

Lane 3 : Raji (Human Burkitt's lymphoma cell line) whole cell lysate

Lane 4 : HeLa (Human epithelial cell line from cervix adenocarcinoma) whole cell lysate

Lane 5 : HepG2 (Human liver hepatocellular carcinoma cell line) whole cell lysate

Lysates/proteins at 20 µg per lane.

Secondary

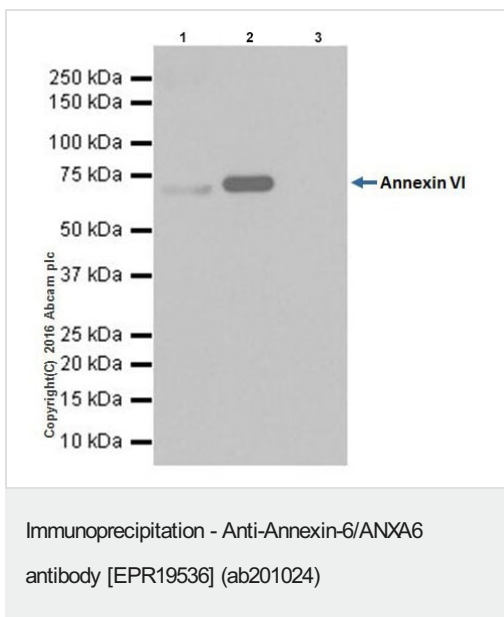
All lanes : Goat Anti-Rabbit IgG H&L (HRP) (**ab97051**) at 1/100000 dilution

Predicted band size: 76 kDa

Observed band size: 72 kDa

Blocking/Dilution buffer: 5% NFDm/TBST.

Exposure time: Lane 1: 3 minutes; Lane 2,3,4 and 5: 30 seconds.



Annexin-6/ANXA6 was immunoprecipitated from 0.35mg of Human fetal liver whole cell lysate with ab201024 at 1/30 dilution.

Western blot was performed from the immunoprecipitate using ab201024 at 1/1000 dilution.

VeriBlot for IP Detection Reagent (HRP) (**ab131366**), was used for detection at 1/10000 dilution.

Lane 1: Human fetal liver whole cell lysate, 10µg (Input).





Lane 2: ab201024 IP in Human fetal liver whole cell lysate.

Lane 3: Rabbit IgG, monoclonal [EPR25A] - Isotype Control (**ab172730**) instead of ab201024 in Human fetal liver whole cell lysate.

Blocking and dilution buffer and concentration: 5% NFDm/TBST.

Exposure time: 3 seconds.

Why choose a recombinant antibody?

 Research with confidence Consistent and reproducible results	 Long-term and scalable supply Recombinant technology
 Success from the first experiment Confirmed specificity	 Ethical standards compliant Animal-free production

Anti-Annexin-6/ANXA6 antibody [EPR19536]
(ab201024)

Please note: All products are "FOR RESEARCH USE ONLY. NOT FOR USE IN DIAGNOSTIC PROCEDURES"

Our Abpromise to you: Quality guaranteed and expert technical support

- Replacement or refund for products not performing as stated on the datasheet
- Valid for 12 months from date of delivery
- Response to your inquiry within 24 hours
- We provide support in Chinese, English, French, German, Japanese and Spanish
- Extensive multi-media technical resources to help you
- We investigate all quality concerns to ensure our products perform to the highest standards

If the product does not perform as described on this datasheet, we will offer a refund or replacement. For full details of the Abpromise, please visit <https://www.abcam.com/abpromise> or contact our technical team.

Terms and conditions

- Guarantee only valid for products bought direct from Abcam or one of our authorized distributors