

Anti-Anoctamin 7 antibody - C-terminal ab196675

3 Images

Overview

| | |
|----------------------------|---|
| Product name | Anti-Anoctamin 7 antibody - C-terminal |
| Description | Rabbit polyclonal to Anoctamin 7 - C-terminal |
| Host species | Rabbit |
| Tested applications | Suitable for: ICC/IF, IHC-P, WB |
| Species reactivity | Reacts with: Human |
| Immunogen | Synthetic peptide corresponding to Human Anoctamin 7 (C terminal). Database link: Q6IWH7 |
| Positive control | LOVO cell extract; Human prostrate carcinoma tissue; HepG2 cells. |
| General notes | <p>The Life Science industry has been in the grips of a reproducibility crisis for a number of years. Abcam is leading the way in addressing this with our range of recombinant monoclonal antibodies and knockout edited cell lines for gold-standard validation. Please check that this product meets your needs before purchasing.</p> <p>If you have any questions, special requirements or concerns, please send us an inquiry and/or contact our Support team ahead of purchase. Recommended alternatives for this product can be found below, along with publications, customer reviews and Q&As</p> |

Properties

| | |
|-----------------------------|---|
| Form | Liquid |
| Storage instructions | Shipped at 4°C. Store at +4°C short term (1-2 weeks). Upon delivery aliquot. Store at -20°C long term. Avoid freeze / thaw cycle. |
| Storage buffer | <p>pH: 7.40</p> <p>Preservative: 0.02% Sodium azide</p> <p>Constituents: 50% Glycerol (glycerin, glycerine), 0.87% Sodium chloride, 49% PBS</p> <p>PBS without Mg²⁺ and Ca²⁺.</p> |
| Purity | Immunogen affinity purified |
| Purification notes | ab196675 was affinity-purified from rabbit antiserum by affinity-chromatography using epitope-specific immunogen. |
| Clonality | Polyclonal |
| Isotype | IgG |

Applications

The Abpromise guarantee

Our **Abpromise guarantee** covers the use of ab196675 in the following tested applications.

The application notes include recommended starting dilutions; optimal dilutions/concentrations should be determined by the end user.

| Application | Abreviews | Notes |
|-------------|-----------|--|
| ICC/IF | | 1/100 - 1/500. |
| IHC-P | | 1/50 - 1/100. |
| WB | | 1/500 - 1/3000. Predicted molecular weight: 106 kDa. |

Target

Function

Does not exhibit calcium-activated chloride channel (CaCC) activity. May play a role in cell-cell interactions.

Tissue specificity

Specifically expressed in epithelial cells of the prostate (at protein level).

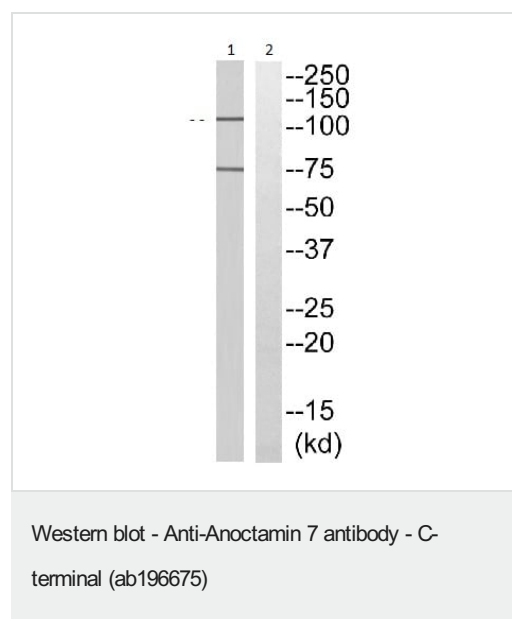
Sequence similarities

Belongs to the anoctamin family.

Cellular localization

Cytoplasm > cytosol and Cell membrane. Cell junction. Endoplasmic reticulum. Concentrates at sites of cell-cell contact. Shows an intracellular localization according to PubMed:22075693 and PubMed:20056604.

Images

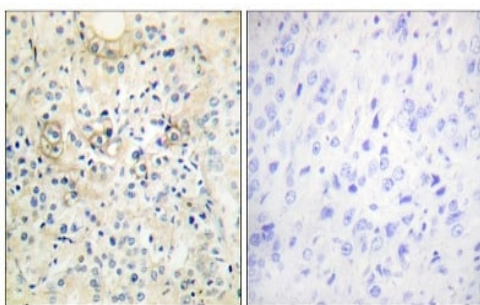


All lanes : Anti-Anoctamin 7 antibody - C-terminal (ab196675) at 1/500 dilution

Lane 1 : LOVO cell extract

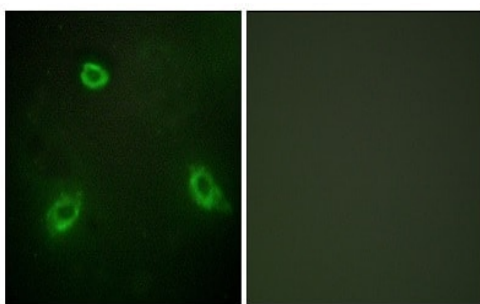
Lane 2 : LOVO cell extract with immunizing peptide

Predicted band size: 106 kDa



Immunohistochemistry (Formalin/PFA-fixed paraffin-embedded sections) - Anti-Anoctamin 7 antibody - C-terminal (ab196675)

Immunohistochemical analysis of paraffin-embedded Human prostate carcinoma tissue labeling Anoctamin 7 with ab196675 at 1/50 dilution, in the presence (right panel) or absence (left panel) of immunizing peptide.



Immunocytochemistry/ Immunofluorescence - Anti-Anoctamin 7 antibody - C-terminal (ab196675)

Immunofluorescent analysis of HepG2 cells labeling Anoctamin 7 with ab196675 at 1/100 dilution, in the presence (right panel) or absence (left panel) of immunizing peptide.

Please note: All products are "FOR RESEARCH USE ONLY. NOT FOR USE IN DIAGNOSTIC PROCEDURES"

Our Abpromise to you: Quality guaranteed and expert technical support

- Replacement or refund for products not performing as stated on the datasheet
- Valid for 12 months from date of delivery
- Response to your inquiry within 24 hours
- We provide support in Chinese, English, French, German, Japanese and Spanish
- Extensive multi-media technical resources to help you
- We investigate all quality concerns to ensure our products perform to the highest standards

If the product does not perform as described on this datasheet, we will offer a refund or replacement. For full details of the Abpromise, please visit <https://www.abcam.com/abpromise> or contact our technical team.

Terms and conditions

- Guarantee only valid for products bought direct from Abcam or one of our authorized distributors