

Product datasheet

Anti-AP-A antibody [EPR9410] ab139179

Recombinant RabMAb

★ ★ ★ ★ ★ 1 [Abreviews](#) 4 [Images](#)

Overview

Product name	Anti-AP-A antibody [EPR9410]
Description	Rabbit monoclonal [EPR9410] to AP-A
Host species	Rabbit
Tested applications	Suitable for: WB, IHC-P Unsuitable for: ICC/IF or IP
Species reactivity	Reacts with: Human
Immunogen	Synthetic peptide within Human AP-A. The exact sequence is proprietary.
Positive control	Human small intestine, fetal lung and fetal kidney lysates; Human kidney tissue.
General notes	<p>This product is a recombinant monoclonal antibody, which offers several advantages including:</p> <ul style="list-style-type: none"> - High batch-to-batch consistency and reproducibility - Improved sensitivity and specificity - Long-term security of supply - Animal-free production <p>For more information see here.</p> <p>Our RabMAb[®] technology is a patented hybridoma-based technology for making rabbit monoclonal antibodies. For details on our patents, please refer to RabMAb[®] patents.</p> <p>Mouse, Rat: We have preliminary internal testing data to indicate this antibody may not react with these species. Please contact us for more information.</p>

Properties

Form	Liquid
Storage instructions	Shipped at 4°C. Store at -20°C.
Storage buffer	<p>pH: 7.2</p> <p>Preservative: 0.01% Sodium azide</p> <p>Constituents: 9% PBS, 40% Glycerol (glycerin, glycerine), 0.05% BSA, 50% Tissue culture supernatant</p>
Purity	Protein A purified
Clonality	Monoclonal

Clone number EPR9410
Isotype IgG

Applications

The Abpromise guarantee Our **Abpromise guarantee** covers the use of ab139179 in the following tested applications.
The application notes include recommended starting dilutions; optimal dilutions/concentrations should be determined by the end user.

Application	Abreviews	Notes
WB		1/1000 - 1/10000. Predicted molecular weight: 109 kDa.
IHC-P		1/50 - 1/100. Perform heat mediated antigen retrieval with citrate buffer pH 6 before commencing with IHC staining protocol.

Application notes Is unsuitable for ICC/IF or IP.

Target

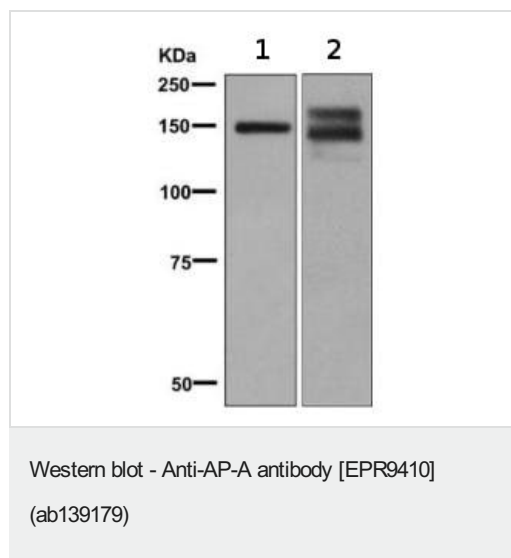
Function Appears to have a role in the catabolic pathway of the renin-angiotensin system. Probably plays a role in regulating growth and differentiation of early B-lineage cells.

Tissue specificity Expressed by epithelial cells of the proximal tubule cells and the glomerulus of the nephron. Also found in a variety of other tissues.

Sequence similarities Belongs to the peptidase M1 family.

Cellular localization Membrane.

Images



All lanes : Anti-AP-A antibody [EPR9410] (ab139179) at 1/1000 dilution

Lane 1 : Human fetal lung tissue lysate

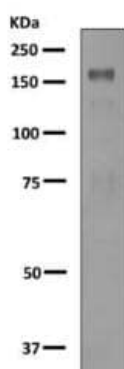
Lane 2 : Human fetal kidney tissue lysate

Lysates/proteins at 10 µg per lane.

Secondary

All lanes : HRP labelled goat anti-rabbit at 1/2000 dilution

Predicted band size: 109 kDa



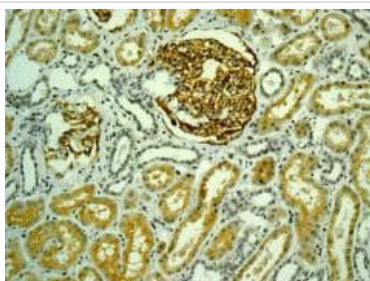
Western blot - Anti-AP-A antibody [EPR9410]
(ab139179)

Anti-AP-A antibody [EPR9410] (ab139179) at 1/1000 dilution +
Human small intestine lysate at 10 µg

Secondary

HRP labelled goat anti-rabbit at 1/2000 dilution

Predicted band size: 109 kDa



Immunohistochemistry (Formalin/PFA-fixed paraffin-
embedded sections) - Anti-AP-A antibody
[EPR9410] (ab139179)

Immunohistochemical analysis of paraffin embedded Human kidney
tissue labelling AP-A with ab139179 at 1/50 dilution.

Perform heat mediated antigen retrieval with citrate buffer pH 6
before commencing with IHC staining protocol.

Why choose a recombinant antibody?



**Research with
confidence**
Consistent and
reproducible results



**Long-term and
scalable supply**
Recombinant
technology



**Success from the
first experiment**
Confirmed
specificity



**Ethical standards
compliant**
Animal-free
production

Anti-AP-A antibody [EPR9410] (ab139179)

Please note: All products are "FOR RESEARCH USE ONLY. NOT FOR USE IN DIAGNOSTIC PROCEDURES"

Our Abpromise to you: Quality guaranteed and expert technical support

- Replacement or refund for products not performing as stated on the datasheet
- Valid for 12 months from date of delivery
- Response to your inquiry within 24 hours

- We provide support in Chinese, English, French, German, Japanese and Spanish
- Extensive multi-media technical resources to help you
- We investigate all quality concerns to ensure our products perform to the highest standards

If the product does not perform as described on this datasheet, we will offer a refund or replacement. For full details of the Abpromise, please visit <https://www.abcam.com/abpromise> or contact our technical team.

Terms and conditions

- Guarantee only valid for products bought direct from Abcam or one of our authorized distributors