




Product datasheet

Anti-AP1M1 antibody ab194384

[1 References](#) [2 Images](#)

Overview

Product name	Anti-AP1M1 antibody
Description	Mouse polyclonal to AP1M1
Host species	Mouse
Tested applications	Suitable for: WB
Species reactivity	Reacts with: Human Predicted to work with: Mouse, Rat, Cow 
Immunogen	Recombinant fragment (GST-tag) corresponding to Human AP1M1 aa 1-100. (NP_115882). Database link: Q9BXS5  Run BLAST with  Run BLAST with
Positive control	WB: recombinant human AP1M1, U-2 OS cell lysate,
General notes	<p>The Life Science industry has been in the grips of a reproducibility crisis for a number of years. Abcam is leading the way in addressing this with our range of recombinant monoclonal antibodies and knockout edited cell lines for gold-standard validation. Please check that this product meets your needs before purchasing.</p> <p>If you have any questions, special requirements or concerns, please send us an inquiry and/or contact our Support team ahead of purchase. Recommended alternatives for this product can be found below, along with publications, customer reviews and Q&As</p>

Properties

Form	Liquid
Storage instructions	Shipped at 4°C. Store at +4°C short term (1-2 weeks). Upon delivery aliquot. Store at -20°C long term. Avoid freeze / thaw cycle.
Storage buffer	Constituent: 50% Glycerol (glycerin, glycerine)
Purity	Whole antiserum
Clonality	Polyclonal
Isotype	IgG

Applications

The Abpromise guarantee

Our **Abpromise guarantee** covers the use of ab194384 in the following tested applications.

The application notes include recommended starting dilutions; optimal dilutions/concentrations should be determined by the end user.

Application	Abreviews	Notes
WB		1/500 - 1/1000. Predicted molecular weight: 49 kDa.

Target

Function

Subunit of clathrin-associated adaptor protein complex 1 that plays a role in protein sorting in the trans-Golgi network (TGN) and endosomes. The AP complexes mediate the recruitment of clathrin to membranes and the recognition of sorting signals within the cytosolic tails of transmembrane cargo molecules.

Sequence similarities

Belongs to the adaptor complexes medium subunit family.
Contains 1 MHD (mu homology) domain.

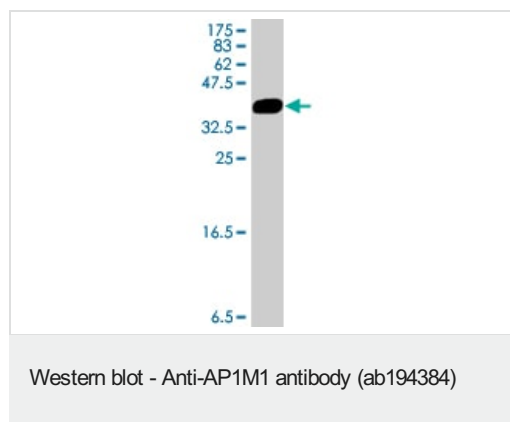
Post-translational modifications

Phosphorylation of membrane-bound AP1M1/AP1M2 increases its affinity for sorting signals.

Cellular localization

Golgi apparatus. Cytoplasmic vesicle > clathrin-coated vesicle membrane. Component of the coat surrounding the cytoplasmic face of coated vesicles located at the Golgi complex.

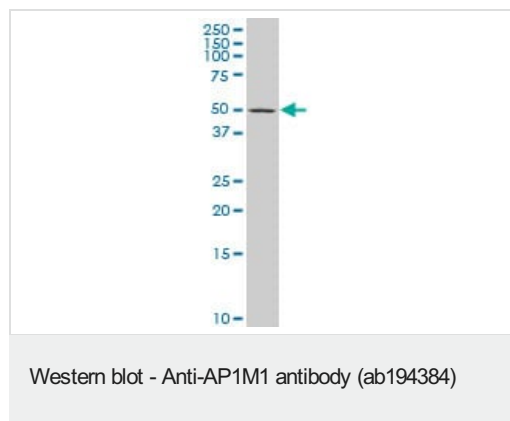
Images



Anti-AP1M1 antibody (ab194384) at 1/1000 dilution + recombinant human AP1M1 (immunogen) at 0.2 µg

Predicted band size: 49 kDa

Predicted MW of immunogen: 34.25 KDa



Anti-AP1M1 antibody (ab194384) at 1/500 dilution + U-2 OS cell lysate at 50 µg

Predicted band size: 49 kDa

Please note: All products are "FOR RESEARCH USE ONLY. NOT FOR USE IN DIAGNOSTIC PROCEDURES"

Our Abpromise to you: Quality guaranteed and expert technical support

- Replacement or refund for products not performing as stated on the datasheet
- Valid for 12 months from date of delivery
- Response to your inquiry within 24 hours
- We provide support in Chinese, English, French, German, Japanese and Spanish
- Extensive multi-media technical resources to help you
- We investigate all quality concerns to ensure our products perform to the highest standards

If the product does not perform as described on this datasheet, we will offer a refund or replacement. For full details of the Abpromise, please visit <https://www.abcam.com/abpromise> or contact our technical team.

Terms and conditions

- Guarantee only valid for products bought direct from Abcam or one of our authorized distributors