




## Product datasheet

# Anti-AP1M1 antibody ab230273

[1 References](#) [3 Images](#)

### Overview

<b>Product name</b>	Anti-AP1M1 antibody
<b>Description</b>	Rabbit polyclonal to AP1M1
<b>Host species</b>	Rabbit
<b>Tested applications</b>	<b>Suitable for:</b> WB, IHC-P
<b>Species reactivity</b>	<b>Reacts with:</b> Human <b>Predicted to work with:</b> Mouse, Rat, Cow 
<b>Immunogen</b>	Recombinant fragment corresponding to Human AP1M1 aa 1-200. Database link: <a href="#">Q9BXS5</a> <div>  <a href="#">Run BLAST with</a>  <a href="#">Run BLAST with</a> </div>
<b>Positive control</b>	WB: A-375, Jurkat, HeLa and HepG2 whole cell lysates. IHC-P: Human placenta and skin tissues.
<b>General notes</b>	<p>The Life Science industry has been in the grips of a reproducibility crisis for a number of years. Abcam is leading the way in addressing this with our range of recombinant monoclonal antibodies and knockout edited cell lines for gold-standard validation. Please check that this product meets your needs before purchasing.</p> <p>If you have any questions, special requirements or concerns, please send us an inquiry and/or contact our Support team ahead of purchase. Recommended alternatives for this product can be found below, along with publications, customer reviews and Q&amp;As</p>

### Properties

<b>Form</b>	Liquid
<b>Storage instructions</b>	Shipped at 4°C. Store at +4°C short term (1-2 weeks). Upon delivery aliquot. Store at -20°C long term. Avoid freeze / thaw cycle.
<b>Storage buffer</b>	pH: 7.30 Preservative: 0.02% Sodium azide Constituents: PBS, 50% Glycerol (glycerin, glycerine)
<b>Purity</b>	Immunogen affinity purified
<b>Clonality</b>	Polyclonal
<b>Isotype</b>	IgG

## Applications

### The Abpromise guarantee

Our **Abpromise guarantee** covers the use of ab230273 in the following tested applications.

The application notes include recommended starting dilutions; optimal dilutions/concentrations should be determined by the end user.

Application	Abreviews	Notes
WB		1/1000 - 1/5000. Predicted molecular weight: 49 kDa.
IHC-P		1/20 - 1/200.

## Target

### Function

Subunit of clathrin-associated adaptor protein complex 1 that plays a role in protein sorting in the trans-Golgi network (TGN) and endosomes. The AP complexes mediate the recruitment of clathrin to membranes and the recognition of sorting signals within the cytosolic tails of transmembrane cargo molecules.

### Sequence similarities

Belongs to the adaptor complexes medium subunit family.  
Contains 1 MHD (mu homology) domain.

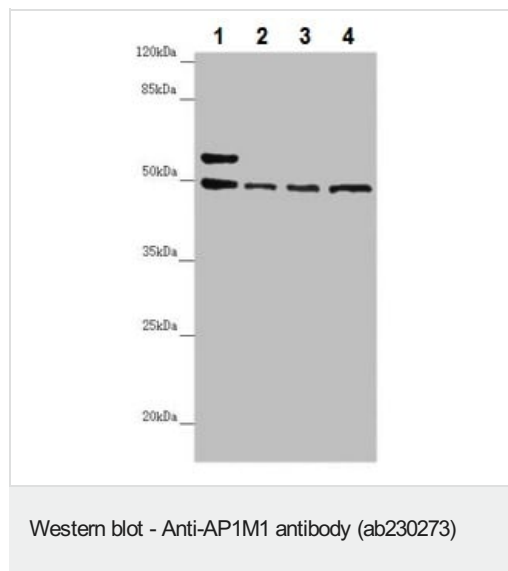
### Post-translational modifications

Phosphorylation of membrane-bound AP1M1/AP1M2 increases its affinity for sorting signals.

### Cellular localization

Golgi apparatus. Cytoplasmic vesicle > clathrin-coated vesicle membrane. Component of the coat surrounding the cytoplasmic face of coated vesicles located at the Golgi complex.

## Images



**All lanes** : Anti-AP1M1 antibody (ab230273) at 1/1000 dilution

**Lane 1** : A-375 (Human malignant melanoma cell line) whole cell lysate

**Lane 2** : Jurkat (Human T cell leukemia cell line from peripheral blood) whole cell lysate

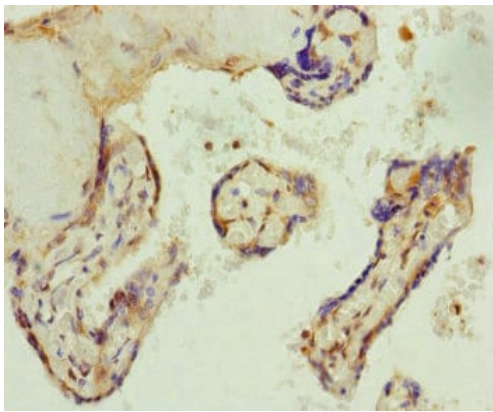
**Lane 3** : HeLa (Human epithelial cell line from cervix adenocarcinoma) whole cell lysate

**Lane 4** : HepG2 (Human liver hepatocellular carcinoma cell line) whole cell lysate

### Secondary

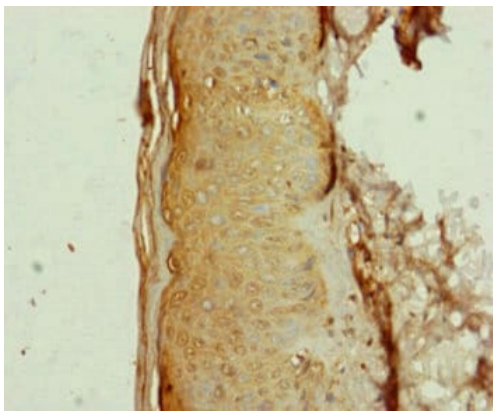
**All lanes** : Goat polyclonal to rabbit IgG at 1/10000 dilution

**Predicted band size:** 49 kDa



Paraffin-embedded human placenta tissue stained for AP1M1 using ab230273 at 1/100 dilution in immunohistochemical analysis.

Immunohistochemistry (Formalin/PFA-fixed paraffin-embedded sections) - Anti-AP1M1 antibody (ab230273)



Paraffin-embedded human skin tissue stained for AP1M1 using ab230273 at 1/100 dilution in immunohistochemical analysis.

Immunohistochemistry (Formalin/PFA-fixed paraffin-embedded sections) - Anti-AP1M1 antibody (ab230273)

**Please note:** All products are "FOR RESEARCH USE ONLY. NOT FOR USE IN DIAGNOSTIC PROCEDURES"

### Our Abpromise to you: Quality guaranteed and expert technical support

- Replacement or refund for products not performing as stated on the datasheet
- Valid for 12 months from date of delivery
- Response to your inquiry within 24 hours
- We provide support in Chinese, English, French, German, Japanese and Spanish
- Extensive multi-media technical resources to help you
- We investigate all quality concerns to ensure our products perform to the highest standards

If the product does not perform as described on this datasheet, we will offer a refund or replacement. For full details of the Abpromise, please visit <https://www.abcam.com/abpromise> or contact our technical team.

## Terms and conditions

---

- Guarantee only valid for products bought direct from Abcam or one of our authorized distributors