

## Product datasheet

### Anti-AP2 gamma/TFAP2C antibody [EP2692Y] ab76007

Recombinant RabMAb

★★★★★ [1 Abreviews](#) [3 References](#) [7 Images](#)

#### Overview

|                            |  |
|----------------------------|--|
| <b>Product name</b>        | Anti-AP2 gamma/TFAP2C antibody [EP2692Y]   |
| <b>Description</b>         | Rabbit monoclonal [EP2692Y] to AP2 gamma/TFAP2C  |
| <b>Host species</b>        | Rabbit   |
| <b>Tested applications</b> | <b>Suitable for:</b> Flow Cyt (Intra), WB, IHC-P, ICC/IF<br><b>Unsuitable for:</b> IP  |
| <b>Species reactivity</b>  | <b>Reacts with:</b> Human  |
| <b>Immunogen</b>           | Synthetic peptide within Human AP2 gamma/TFAP2C aa 100-200. The exact sequence is proprietary.   |
| <b>Positive control</b>    | WB: MCF7 and SKBR3 cell lysates. IHC-P: Human cervical carcinoma, endometrial carcinoma and prostatic carcinoma tissues. ICC/IF: MCF7 cells Flow Cyt (intra): MCF7 cells   |
| <b>General notes</b>       | <p>This product is a recombinant monoclonal antibody, which offers several advantages including:</p> <ul style="list-style-type: none"> <li>- High batch-to-batch consistency and reproducibility</li> <li>- Improved sensitivity and specificity</li> <li>- Long-term security of supply</li> <li>- Animal-free production</li> </ul> <p>For more information <a href="#">see here</a>.</p> <p>Our RabMAb<sup>®</sup> technology is a patented hybridoma-based technology for making rabbit monoclonal antibodies. For details on our patents, please refer to <a href="#">RabMAb<sup>®</sup> patents</a>.</p> <p>Mouse, Rat: We have preliminary internal testing data to indicate this antibody may not react with these species. Please contact us for more information.</p> |

#### Properties

|                             |   |
|-----------------------------|---|
| <b>Form</b>                 | Liquid  |
| <b>Storage instructions</b> | Shipped at 4°C. Store at -20°C. Stable for 12 months at -20°C.  |
| <b>Storage buffer</b>       | <p>pH: 7.20</p> <p>Preservative: 0.05% Sodium azide</p> <p>Constituents: 0.1% BSA, 40% Glycerol (glycerin, glycerine), 9.85% Tris glycine, 50% Tissue culture supernatant</p> |
| <b>Purity</b>               | Protein A purified  |

|                     |            |
|---------------------|------------|
| <b>Clonality</b>    | Monoclonal |
| <b>Clone number</b> | EP2692Y    |
| <b>Isotype</b>      | IgG        |

## Applications

**The Abpromise guarantee** Our **Abpromise guarantee** covers the use of ab76007 in the following tested applications. The application notes include recommended starting dilutions; optimal dilutions/concentrations should be determined by the end user.

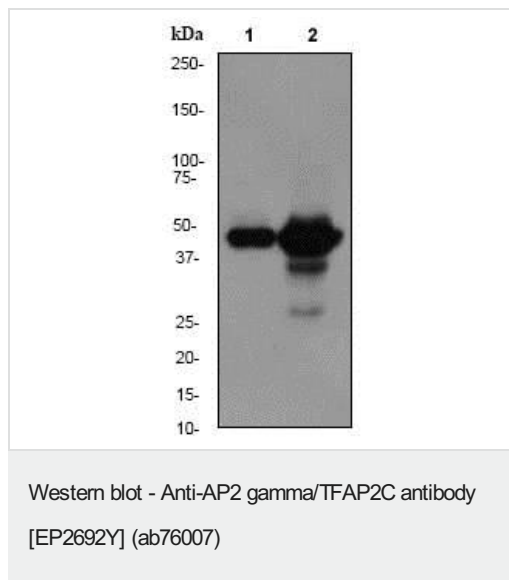
| Application      | Abreviews | Notes   |
|------------------|-----------|---|
| Flow Cyt (Intra) |           | 1/100.<br><b>ab172730</b> - Rabbit monoclonal IgG, is suitable for use as an isotype control with this antibody.              |
| WB               | ★★★★★ (1) | 1/25000 - 1/50000. Predicted molecular weight: 49 kDa.  |
| IHC-P            |           | 1/250 - 1/500. Perform heat mediated antigen retrieval with citrate buffer pH 6 before commencing with IHC staining protocol. |
| ICC/IF           |           | 1/500.  |

**Application notes** Is unsuitable for IP.

## Target

|   |  |
|---|--|
| <b>Function</b>                         | Sequence-specific DNA-binding protein that interacts with inducible viral and cellular enhancer elements to regulate transcription of selected genes. AP-2 factors bind to the consensus sequence 5'-GCCNNNGGC-3' and activate genes involved in a large spectrum of important biological functions including proper eye, face, body wall, limb and neural tube development. They also suppress a number of genes including MCAM/MUC18, C/EBP alpha and MYC. |
| <b>Sequence similarities</b>            | Belongs to the AP-2 family.  |
| <b>Domain</b>                           | The WW-binding motif mediates interaction with WWOX.   |
| <b>Post-translational modifications</b> | Sumoylated on Lys-10; which inhibits transcriptional activity.   |
| <b>Cellular localization</b>            | Nucleus.   |

## Images



**All lanes :** Anti-AP2 gamma/TFAP2C antibody [EP2692Y] (ab76007) at 1/50000 dilution

**Lane 1 :** MCF7 cell lysate

**Lane 2 :** SKBR3 cell lysate

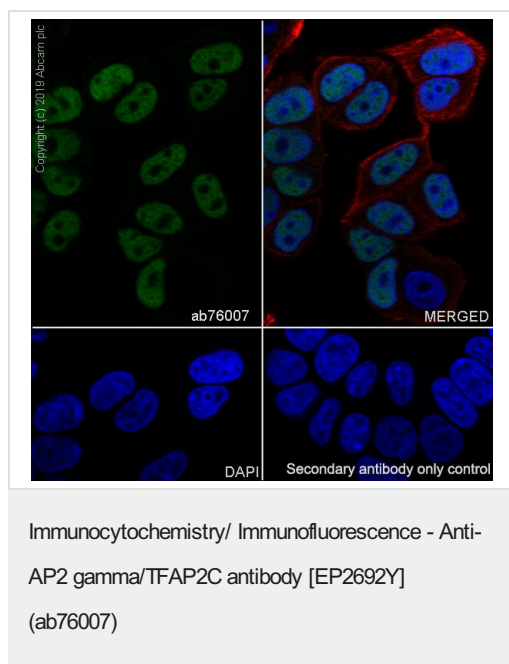
Lysates/proteins at 10 µg per lane.

#### Secondary

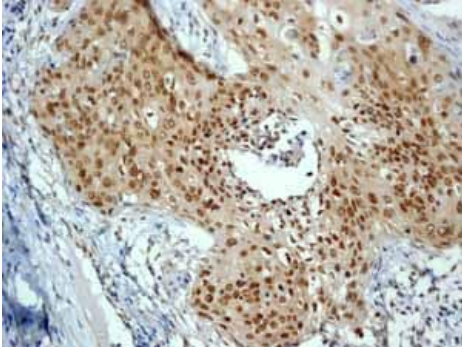
**All lanes :** Goat anti-rabbit HRP at 1/1000 dilution

**Predicted band size:** 49 kDa

**Observed band size:** 49 kDa



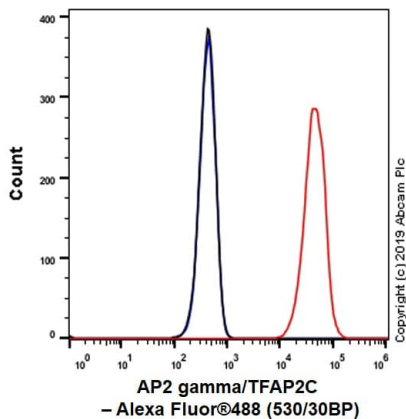
Immunocytochemistry/ Immunofluorescence analysis of MCF7 (human breast adenocarcinoma epithelial cell) cells labeling AP2 gamma/TFAP2C with purified ab76007 at 1/500 dilution (2 µg/mL). Cells were fixed in 4% Paraformaldehyde and permeabilized with 0.1% tritonX-100. Cells were counterstained with **ab195889** Anti-alpha Tubulin antibody [DM1A] - Microtubule Marker (Alexa Fluor® 594) 1/200 (2.5 µg/mL). Goat anti rabbit IgG (Alexa Fluor® 488, **ab150077**) was used as the secondary antibody at 1/1000 (2 µg/mL) dilution. DAPI (blue) was used as nuclear counterstain. **ab195889** Anti-alpha Tubulin antibody [DM1A] - Microtubule Marker (Alexa Fluor® 594) 1/200 (2.5 µg/mL) was used as the secondary antibody only control.



Immunohistochemistry (Formalin/PFA-fixed paraffin-embedded sections) - Anti-AP2 gamma/TFAP2C antibody [EP2692Y] (ab76007)

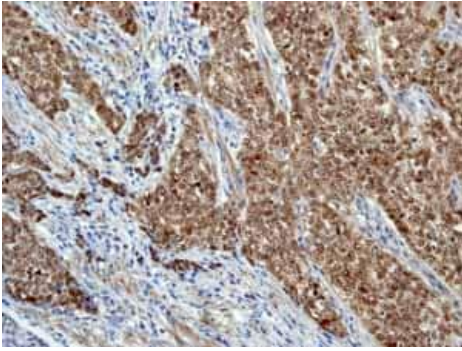
ab76007 showing positive staining in Cervical carcinoma tissue.

Perform heat mediated antigen retrieval with citrate buffer pH 6 before commencing with IHC staining protocol.



Flow Cytometry (Intracellular) - Anti-AP2 gamma/TFAP2C antibody [EP2692Y] (ab76007)

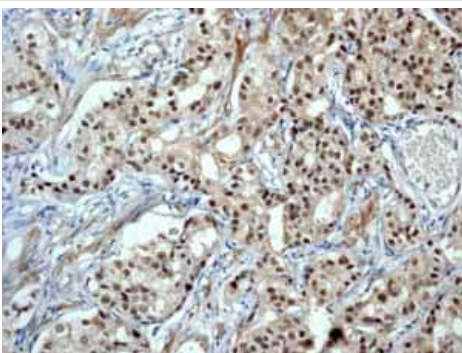
Intracellular Flow Cytometry analysis of MCF7 (Human breast adenocarcinoma epithelial cell) cells labeling AP2 gamma/TFAP2C with purified ab76007 at 1/100 dilution (10 µg/mL) (Red). Cells were fixed with 4% Paraformaldehyde and permeabilised with 90% Methanol. A Goat anti rabbit IgG (Alexa Fluor® 488, **ab150077**) secondary antibody was used at 1/2000. Isotype control - Rabbit monoclonal IgG (Black). Unlabeled control - Cells without incubation with primary antibody and secondary antibody (Blue).



Immunohistochemistry (Formalin/PFA-fixed paraffin-embedded sections) - Anti-AP2 gamma/TFAP2C antibody [EP2692Y] (ab76007)

ab76007 showing positive staining in Endometrial carcinoma tissue.

Perform heat mediated antigen retrieval with citrate buffer pH 6 before commencing with IHC staining protocol.



Immunohistochemistry (Formalin/PFA-fixed paraffin-embedded sections) - Anti-AP2 gamma/TFAP2C antibody [EP2692Y] (ab76007)

ab76007 showing positive staining in Prostatic carcinoma tissue.

Perform heat mediated antigen retrieval with citrate buffer pH 6 before commencing with IHC staining protocol.

### Why choose a recombinant antibody?



**Research with confidence**  
Consistent and reproducible results



**Long-term and scalable supply**  
Recombinant technology



**Success from the first experiment**  
Confirmed specificity



**Ethical standards compliant**  
Animal-free production

Anti-AP2 gamma/TFAP2C antibody [EP2692Y] (ab76007)

**Please note:** All products are "FOR RESEARCH USE ONLY. NOT FOR USE IN DIAGNOSTIC PROCEDURES"

### **Our Abpromise to you: Quality guaranteed and expert technical support**

---

- Replacement or refund for products not performing as stated on the datasheet
- Valid for 12 months from date of delivery
- Response to your inquiry within 24 hours
  
- We provide support in Chinese, English, French, German, Japanese and Spanish
- Extensive multi-media technical resources to help you
- We investigate all quality concerns to ensure our products perform to the highest standards

If the product does not perform as described on this datasheet, we will offer a refund or replacement. For full details of the Abpromise, please visit [\*\*https://www.abcam.com/abpromise\*\*](https://www.abcam.com/abpromise) or contact our technical team.

### **Terms and conditions**

---

- Guarantee only valid for products bought direct from Abcam or one of our authorized distributors