

Product datasheet

Anti-AP3 antibody ab85075

1 Image

Overview

Product name	Anti-AP3 antibody
Description	Rabbit polyclonal to AP3
Host species	Rabbit
Tested applications	Suitable for: WB
Species reactivity	Reacts with: Human
Immunogen	A 15 amino acid peptide from near the C terminal residues of Human AP3, swissprot O14617
Positive control	HeLa cell lysate.
General notes	<p>The Life Science industry has been in the grips of a reproducibility crisis for a number of years. Abcam is leading the way in addressing this with our range of recombinant monoclonal antibodies and knockout edited cell lines for gold-standard validation. Please check that this product meets your needs before purchasing.</p> <p>If you have any questions, special requirements or concerns, please send us an inquiry and/or contact our Support team ahead of purchase. Recommended alternatives for this product can be found below, along with publications, customer reviews and Q&As</p>

Properties

Form	Lyophilized:Reconstitute with 200ul distilled sterile water. Please note that if you receive this product in liquid form it has already been reconstituted as described and no further reconstitution is necessary.
Storage instructions	Shipped at 4°C. Store at +4°C.
Storage buffer	Preservative: 0.02% Sodium azide
Purity	Protein A purified
Clonality	Polyclonal
Isotype	IgG

Applications

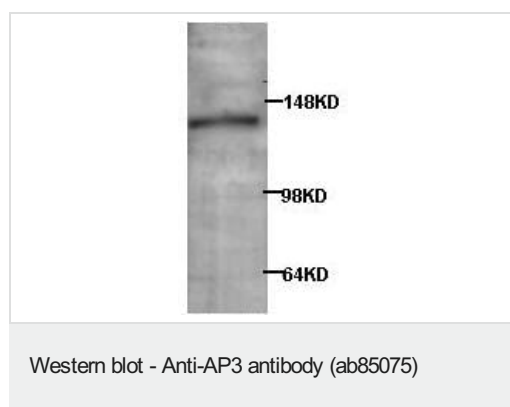
The Abpromise guarantee Our **Abpromise guarantee** covers the use of ab85075 in the following tested applications. The application notes include recommended starting dilutions; optimal dilutions/concentrations should be determined by the end user.

Application	Abreviews	Notes
WB		1/200 - 1/1000. Detects a band of approximately 130 kDa (predicted molecular weight: 130 kDa).

Target

Function	Part of the AP-3 complex, an adaptor-related complex which is not clathrin-associated. The complex is associated with the Golgi region as well as more peripheral structures. It facilitates the budding of vesicles from the Golgi membrane and may be directly involved in trafficking to lysosomes.
Tissue specificity	Present in all adult tissues examined with the highest levels in skeletal muscle, heart, pancreas and testis.
Sequence similarities	Belongs to the adaptor complexes large subunit family. Contains 11 HEAT repeats.
Cellular localization	Cytoplasm. Golgi apparatus membrane.

Images



Anti-AP3 antibody (ab85075) at 1/500 dilution + HeLa cell lysate

Predicted band size: 130 kDa

Observed band size: 130 kDa

Please note: All products are "FOR RESEARCH USE ONLY. NOT FOR USE IN DIAGNOSTIC PROCEDURES"

Our Abpromise to you: Quality guaranteed and expert technical support

- Replacement or refund for products not performing as stated on the datasheet
- Valid for 12 months from date of delivery
- Response to your inquiry within 24 hours
- We provide support in Chinese, English, French, German, Japanese and Spanish
- Extensive multi-media technical resources to help you
- We investigate all quality concerns to ensure our products perform to the highest standards

If the product does not perform as described on this datasheet, we will offer a refund or replacement. For full details of the Abpromise, please visit <https://www.abcam.com/abpromise> or contact our technical team.

Terms and conditions

- Guarantee only valid for products bought direct from Abcam or one of our authorized distributors