

Anti-AP3B2 antibody ab113100

[5 Images](#)

Overview

Product name	Anti-AP3B2 antibody
Description	Rabbit polyclonal to AP3B2
Host species	Rabbit
Specificity	At least three isoforms of AP3B2 are known to exist; this antibody will recognize the two larger isoforms.
Tested applications	Suitable for: WB, ICC/IF, IHC-P
Species reactivity	Reacts with: Mouse, Rat
Immunogen	An 18 amino acid synthetic peptide from near the amino terminus of Human AP3B2 (NP_004635).
Positive control	WB: Rat brain tissue lysate, mouse brain lysate, IHC-P: Mouse brain tissue. ICC: Mouse brain tissue.
General notes	<p>The Life Science industry has been in the grips of a reproducibility crisis for a number of years. Abcam is leading the way in addressing this with our range of recombinant monoclonal antibodies and knockout edited cell lines for gold-standard validation. Please check that this product meets your needs before purchasing.</p> <p>If you have any questions, special requirements or concerns, please send us an inquiry and/or contact our Support team ahead of purchase. Recommended alternatives for this product can be found below, along with publications, customer reviews and Q&As</p>

Properties

Form	Liquid
Storage instructions	Shipped at 4°C. Store at 4°C (stable for up to 12 months).
Storage buffer	<p>pH: 7.2</p> <p>Preservative: 0.02% Sodium azide</p> <p>Constituent: 99.98% PBS</p>
Purity	Immunogen affinity purified
Purification notes	ab113100 is purified by affinity chromatography via a peptide column.
Clonality	Polyclonal
Isotype	IgG

Applications

The Abpromise guarantee

Our **Abpromise guarantee** covers the use of ab113100 in the following tested applications.

The application notes include recommended starting dilutions; optimal dilutions/concentrations should be determined by the end user.

Application	Abreviews	Notes
WB		Use a concentration of 1 - 2 µg/ml. Predicted molecular weight: 119 kDa.
ICC/IF		Use a concentration of 20 µg/ml.
IHC-P		Use at an assay dependent concentration.

Target

Function

Subunit of non-clathrin- and clathrin-associated adaptor protein complex 3 that plays a role in protein sorting in the late-Golgi/trans-Golgi network (TGN) and/or endosomes. The AP complexes mediate both the recruitment of clathrin to membranes and the recognition of sorting signals within the cytosolic tails of transmembrane cargo molecules. AP-3 appears to be involved in the sorting of a subset of transmembrane proteins targeted to lysosomes and lysosome-related organelles.

Tissue specificity

Expression is specific to nervous system. Expressed in nerve terminal and cell body, and is associated with nerve-terminal vesicles. Expression seen in Purkinje cells, cortical neurons, neuroectodermal tumors and graded in cerebral cortex (deeper layers exhibit stronger expression).

Sequence similarities

Belongs to the adaptor complexes large subunit family.

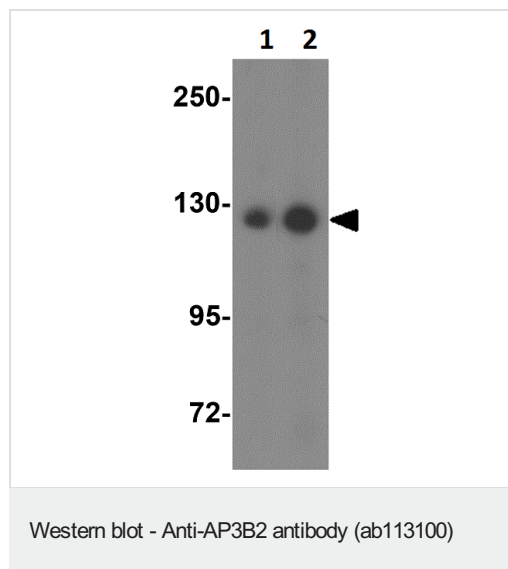
Developmental stage

Expressed from early in development through adulthood.

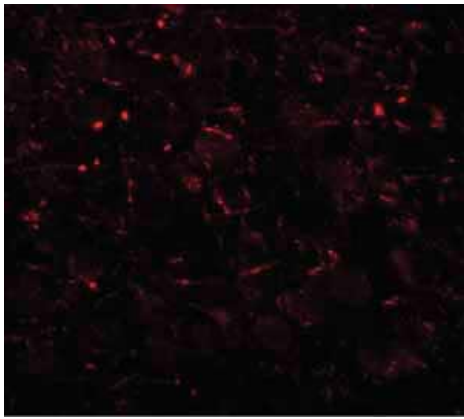
Cellular localization

Golgi apparatus. Cytoplasmic vesicle > clathrin-coated vesicle membrane. Golgi apparatus. Component of the coat surrounding the cytoplasmic face of coated vesicles located at the Golgi complex.

Images

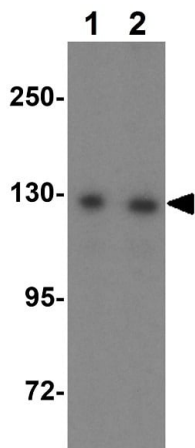


Western Blot of rat brain tissue lysate labeling AP3B2 with Anti-AP3B2 antibody (ab113100) at (1) 1 and (2) 2 µg/ml.



Immunocytochemistry/ Immunofluorescence - Anti-AP3B2 antibody (ab113100)

Immunofluorescence of AP3B2 in mouse brain tissue with ab113100 at 20 $\mu\text{g/mL}$.



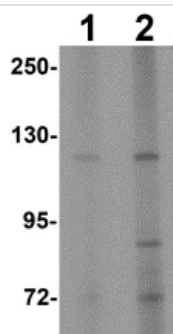
Western blot - Anti-AP3B2 antibody (ab113100)

Lane 1 : Anti-AP3B2 antibody (ab113100) at 1 $\mu\text{g/ml}$

Lane 2 : Anti-AP3B2 antibody (ab113100) at 2 $\mu\text{g/ml}$

All lanes : Mouse brain lysate

Predicted band size: 119 kDa



Western blot - Anti-AP3B2 antibody (ab113100)

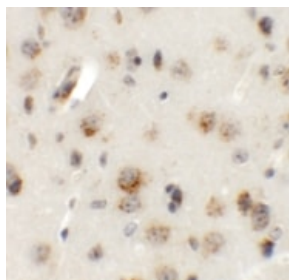
Lane 1 : Anti-AP3B2 antibody (ab113100) at 1 $\mu\text{g/ml}$

Lane 2 : Anti-AP3B2 antibody (ab113100) at 2 $\mu\text{g/ml}$

All lanes : Rat brain tissue lysate

Lysates/proteins at 15 μg per lane.

Predicted band size: 119 kDa



Immunohistochemical analysis of mouse brain tissue, staining AP3B2 with ab113100 at 5 µg/ml.

Immunohistochemistry (Formalin/PFA-fixed paraffin-embedded sections) - Anti-AP3B2 antibody (ab113100)

Please note: All products are "FOR RESEARCH USE ONLY. NOT FOR USE IN DIAGNOSTIC PROCEDURES"

Our Abpromise to you: Quality guaranteed and expert technical support

- Replacement or refund for products not performing as stated on the datasheet
- Valid for 12 months from date of delivery
- Response to your inquiry within 24 hours
- We provide support in Chinese, English, French, German, Japanese and Spanish
- Extensive multi-media technical resources to help you
- We investigate all quality concerns to ensure our products perform to the highest standards

If the product does not perform as described on this datasheet, we will offer a refund or replacement. For full details of the Abpromise, please visit <https://www.abcam.com/abpromise> or contact our technical team.

Terms and conditions

- Guarantee only valid for products bought direct from Abcam or one of our authorized distributors