

Product datasheet

Anti-APAF1 antibody ab2000

★★★★★ [2 Abreviews](#) [12 References](#) [2 Images](#)

Overview

Product name	Anti-APAF1 antibody
Description	Rabbit polyclonal to APAF1
Host species	Rabbit
Tested applications	Suitable for: IHC-P, WB
Species reactivity	Reacts with: Human
Immunogen	Synthetic peptide corresponding to Human APAF1 aa 1158-1177 (C terminal). Sequence: TFYTNGTNLKKIHVSPDFKT

(Peptide available as [ab7872](#))

 [Run BLAST with](#)

 [Run BLAST with](#)

General notes

The Life Science industry has been in the grips of a reproducibility crisis for a number of years. Abcam is leading the way in addressing this with our range of recombinant monoclonal antibodies and knockout edited cell lines for gold-standard validation. Please check that this product meets your needs before purchasing.

If you have any questions, special requirements or concerns, please send us an inquiry and/or contact our Support team ahead of purchase. Recommended alternatives for this product can be found below, along with publications, customer reviews and Q&As

Properties

Form	Liquid
Storage instructions	Shipped at 4°C. Upon delivery aliquot and store at -20°C or -80°C. Avoid repeated freeze / thaw cycles.
Storage buffer	pH: 7.2 Preservative: 0.02% Sodium azide
Purity	Immunogen affinity purified
Clonality	Polyclonal
Isotype	IgG

Applications

The Abpromise guarantee

Our **Abpromise guarantee** covers the use of ab2000 in the following tested applications.

The application notes include recommended starting dilutions; optimal dilutions/concentrations should be determined by the end user.

Application	Abreviews	Notes
IHC-P	★★★★★ (1)	Use a concentration of 20 µg/ml.
WB	★★★★★ (1)	1/500 - 1/2000. Predicted molecular weight: 130 kDa.

Target

Function

Oligomeric Apaf-1 mediates the cytochrome c-dependent autocatalytic activation of pro-caspase-9 (Apaf-3), leading to the activation of caspase-3 and apoptosis. This activation requires ATP. Isoform 6 is less effective in inducing apoptosis.

Tissue specificity

Ubiquitous. Highest levels of expression in adult spleen and peripheral blood leukocytes, and in fetal brain, kidney and lung. Isoform 1 is expressed in heart, kidney and liver.

Sequence similarities

Contains 1 CARD domain.
Contains 1 NB-ARC domain.
Contains 13 WD repeats.

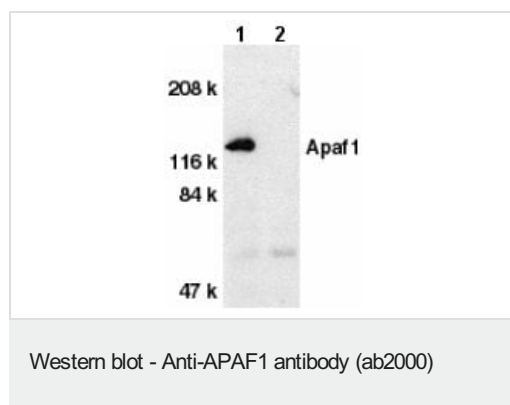
Domain

The CARD domain mediates interaction with AIP1.

Cellular localization

Cytoplasm.

Images



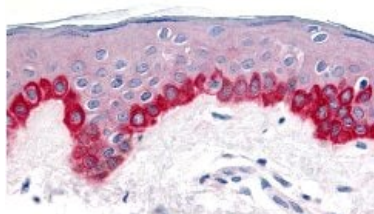
All lanes : Anti-APAF1 antibody (ab2000) at 1 µg/ml

Lane 1 : Human heart tissue lysate with absence of blocking peptide

Lane 2 : Human heart tissue lysate with presence of blocking peptide

Predicted band size: 130 kDa

Observed band size: 130 kDa



Immunohistochemistry of Apaf1 in human skin tissue with Apaf1 antibody at 20 µg/ml.

Immunohistochemistry (Formalin/PFA-fixed paraffin-embedded sections) - Anti-APAF1 antibody (ab2000)

Please note: All products are "FOR RESEARCH USE ONLY. NOT FOR USE IN DIAGNOSTIC PROCEDURES"

Our Abpromise to you: Quality guaranteed and expert technical support

- Replacement or refund for products not performing as stated on the datasheet
- Valid for 12 months from date of delivery
- Response to your inquiry within 24 hours
- We provide support in Chinese, English, French, German, Japanese and Spanish
- Extensive multi-media technical resources to help you
- We investigate all quality concerns to ensure our products perform to the highest standards

If the product does not perform as described on this datasheet, we will offer a refund or replacement. For full details of the Abpromise, please visit <https://www.abcam.com/abpromise> or contact our technical team.

Terms and conditions

- Guarantee only valid for products bought direct from Abcam or one of our authorized distributors