

APC Anti-CD15 antibody [MCS-1] ab91151

1 Image

Overview

Product name	APC Anti-CD15 antibody [MCS-1]
Description	APC Mouse monoclonal [MCS-1] to CD15
Host species	Mouse
Conjugation	APC. Ex: 645nm, Em: 660nm
Specificity	ab91151 recognizes the carbohydrate structure 3-fucosyl-N-acetyl-lactosamine. It reacts with the promyelocytes, myelocytes and polymorphonuclear cells. It specifically labels neutrophils, eosinophils and monoblastoid precursor cells of the myeloid lineage. ab91151 does not react with platelets and cells of the T and B lymphocyte lineage.
Tested applications	Suitable for: Flow Cyt
Species reactivity	Reacts with: Human
Immunogen	Human granulocytes
Positive control	Normal peripheral blood from a Human donor.
General notes	<p>The Life Science industry has been in the grips of a reproducibility crisis for a number of years. Abcam is leading the way in addressing this with our range of recombinant monoclonal antibodies and knockout edited cell lines for gold-standard validation. Please check that this product meets your needs before purchasing.</p> <p>If you have any questions, special requirements or concerns, please send us an inquiry and/or contact our Support team ahead of purchase. Recommended alternatives for this product can be found below, along with publications, customer reviews and Q&As</p>

Properties

Form	Liquid
Storage instructions	Shipped at 4°C. Store at +4°C.
Storage buffer	<p>pH: 7.20</p> <p>Preservative: 0.09% Sodium azide</p> <p>Constituent: 1% BSA</p>
Purity	Immunogen affinity purified
Clonality	Monoclonal
Clone number	MCS-1

IsotypeIgG3

Applications

The **Abpromise guarantee** Our **Abpromise guarantee** covers the use of ab91151 in the following tested applications. The application notes include recommended starting dilutions; optimal dilutions/concentrations should be determined by the end user.

Application	Abreviews	Notes
Flow Cyt		

Application notes Flow Cyt: Use 20 µl for 10⁶ cells.

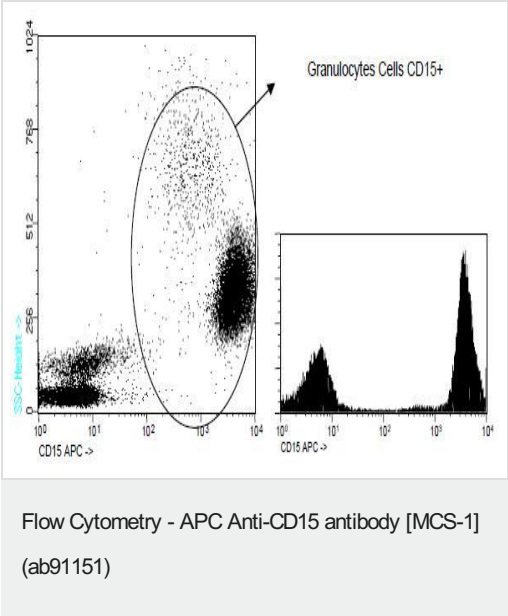
Not yet tested in other applications.
Optimal dilutions/concentrations should be determined by the end user.

Target

Relevance CD15 is a carbohydrate adhesion molecule (and not a protein) that mediates phagocytosis and chemotaxis. Synthesis is directed by FUT4 in lymphoid cells and mature granulocytes, and by FUT9 in promyelocytes and monocytes.

Cellular localization Golgi Apparatus; Membrane-bound form in trans cisternae of Golgi.

Images



Analysis of normal peripheral blood from a Human donor by Flow Cytometry, using ab91151 at 20 µl for 10⁶ cells.

Please note: All products are "FOR RESEARCH USE ONLY. NOT FOR USE IN DIAGNOSTIC PROCEDURES"

Our Abpromise to you: Quality guaranteed and expert technical support

- Replacement or refund for products not performing as stated on the datasheet
- Valid for 12 months from date of delivery
- Response to your inquiry within 24 hours
- We provide support in Chinese, English, French, German, Japanese and Spanish
- Extensive multi-media technical resources to help you
- We investigate all quality concerns to ensure our products perform to the highest standards

If the product does not perform as described on this datasheet, we will offer a refund or replacement. For full details of the Abpromise, please visit <https://www.abcam.com/abpromise> or contact our technical team.

Terms and conditions

- Guarantee only valid for products bought direct from Abcam or one of our authorized distributors