

# APC Anti-IL-2 Receptor alpha antibody [TP1/6] ab91164

[1 Image](#)

### Overview

---

<b>Product name</b>	APC Anti-IL-2 Receptor alpha antibody [TP1/6]
<b>Description</b>	APC Mouse monoclonal [TP1/6] to IL-2 Receptor alpha
<b>Host species</b>	Mouse
<b>Conjugation</b>	APC. Ex: 645nm, Em: 660nm
<b>Tested applications</b>	<b>Suitable for:</b> Flow Cyt
<b>Species reactivity</b>	<b>Reacts with:</b> Human
<b>Immunogen</b>	Tissue, cells or virus corresponding to Human IL-2 Receptor alpha. PHA activated T cells (Human)
<b>Epitope</b>	ab91164 recognizes epitope B of the IL2 Receptor alpha.
<b>Positive control</b>	Normal Human peripheral blood cells
<b>General notes</b>	<p>The Life Science industry has been in the grips of a reproducibility crisis for a number of years. Abcam is leading the way in addressing this with our range of recombinant monoclonal antibodies and knockout edited cell lines for gold-standard validation. Please check that this product meets your needs before purchasing.</p> <p>If you have any questions, special requirements or concerns, please send us an inquiry and/or contact our Support team ahead of purchase. Recommended alternatives for this product can be found below, along with publications, customer reviews and Q&amp;As</p>

### Properties

---

<b>Form</b>	Liquid
<b>Storage instructions</b>	Shipped at 4°C. Store at +4°C.
<b>Storage buffer</b>	pH: 7.20 Preservative: 0.09% Sodium azide Constituent: 1% BSA
<b>Purity</b>	Immunogen affinity purified
<b>Clonality</b>	Monoclonal
<b>Clone number</b>	TP1/6
<b>Isotype</b>	IgG2b

## Applications

### The Abpromise guarantee

Our **Abpromise guarantee** covers the use of ab91164 in the following tested applications.

The application notes include recommended starting dilutions; optimal dilutions/concentrations should be determined by the end user.

Application	Abreviews	Notes
Flow Cyt		

### Application notes

Flow Cyt: Use 20  $\mu$ l for  $10^6$  cells.

Not yet tested in other applications.

Optimal dilutions/concentrations should be determined by the end user.

## Target

### Function

Receptor for interleukin-2.

### Involvement in disease

Genetic variations in IL2RA are associated with susceptibility to diabetes mellitus insulin-dependent type 10 (IDDM10) [MIM:601942]. A multifactorial disorder of glucose homeostasis that is characterized by susceptibility to ketoacidosis in the absence of insulin therapy. Clinical features are polydipsia, polyphagia and polyuria which result from hyperglycemia-induced osmotic diuresis and secondary thirst. These derangements result in long-term complications that affect the eyes, kidneys, nerves, and blood vessels.

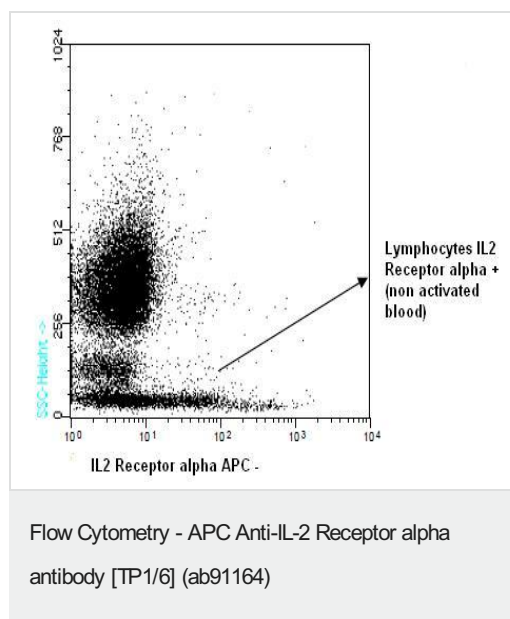
### Sequence similarities

Contains 2 Sushi (CCP/SCR) domains.

### Cellular localization

Membrane.

## Images



ab91164, at 20  $\mu$ l/ $10^6$  cells, staining IL2 Receptor alpha in normal Human peripheral blood cells by Flow cytometry.

**Please note:** All products are "FOR RESEARCH USE ONLY. NOT FOR USE IN DIAGNOSTIC PROCEDURES"

## **Our Abpromise to you: Quality guaranteed and expert technical support**

---

- Replacement or refund for products not performing as stated on the datasheet
- Valid for 12 months from date of delivery
- Response to your inquiry within 24 hours
  
- We provide support in Chinese, English, French, German, Japanese and Spanish
- Extensive multi-media technical resources to help you
- We investigate all quality concerns to ensure our products perform to the highest standards

If the product does not perform as described on this datasheet, we will offer a refund or replacement. For full details of the Abpromise, please visit <https://www.abcam.com/abpromise> or contact our technical team.

## **Terms and conditions**

---

- Guarantee only valid for products bought direct from Abcam or one of our authorized distributors