

## Product datasheet

### Anti-APC2 antibody ab106600

[3 Images](#)

#### Overview

---

<b>Product name</b>	Anti-APC2 antibody
<b>Description</b>	Rabbit polyclonal to APC2
<b>Host species</b>	Rabbit
<b>Specificity</b>	ab106600 is predicted to not cross-react with other Apc family members. At least four isoforms of Apc2 are known to exist.
<b>Tested applications</b>	<b>Suitable for:</b> ICC/IF, WB, ICC
<b>Species reactivity</b>	<b>Reacts with:</b> Human
<b>Immunogen</b>	Synthetic peptide corresponding to Human APC2 (internal sequence). Database link: <a href="#">O95996</a>
<b>Positive control</b>	HeLa cells and cell lysate
<b>General notes</b>	<p>The Life Science industry has been in the grips of a reproducibility crisis for a number of years. Abcam is leading the way in addressing this with our range of recombinant monoclonal antibodies and knockout edited cell lines for gold-standard validation. Please check that this product meets your needs before purchasing.</p> <p>If you have any questions, special requirements or concerns, please send us an inquiry and/or contact our Support team ahead of purchase. Recommended alternatives for this product can be found below, along with publications, customer reviews and Q&amp;As</p>

#### Properties

---

<b>Form</b>	Liquid
<b>Storage instructions</b>	Shipped at 4°C. Store at 4°C (stable for up to 12 months).
<b>Storage buffer</b>	pH: 7.2 Preservative: 0.02% Sodium azide Constituent: PBS
<b>Purity</b>	Immunogen affinity purified
<b>Clonality</b>	Polyclonal
<b>Isotype</b>	IgG

#### Applications

## The Abpromise guarantee

Our **Abpromise guarantee** covers the use of ab106600 in the following tested applications.

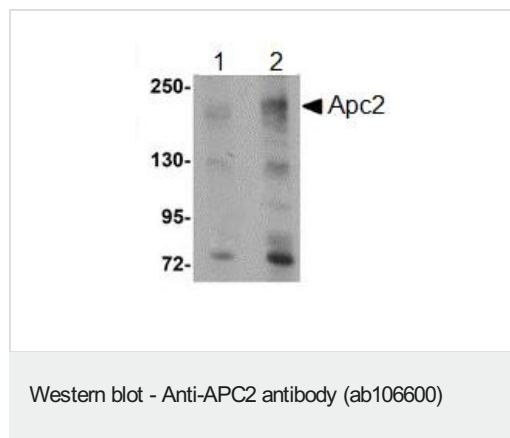
The application notes include recommended starting dilutions; optimal dilutions/concentrations should be determined by the end user.

Application	Abreviews	Notes
ICC/IF		Use a concentration of 20 µg/ml.
WB		Use a concentration of 1 - 2 µg/ml. Predicted molecular weight: 244 kDa.
ICC		Use a concentration of 5 µg/ml.

## Target

<b>Function</b>	Promotes rapid degradation of CTNNB1 and may function as a tumor suppressor. May function in Wnt signaling.
<b>Tissue specificity</b>	Widely expressed (at protein level). Specifically expressed in the CNS.
<b>Sequence similarities</b>	Belongs to the adenomatous polyposis coli (APC) family. Contains 6 ARM repeats.
<b>Developmental stage</b>	Expressed in fetal brain.
<b>Cellular localization</b>	Cytoplasm, cytoskeleton. Golgi apparatus. Cytoplasm. Cytoplasm, perinuclear region. Associated with actin filaments (PubMed:11691822). Associated with microtubule network (PubMed:10644998, PubMed:11691822).

## Images



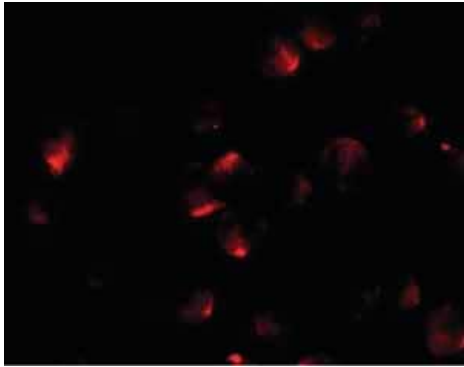
**Lane 1** : Anti-APC2 antibody (ab106600) at 1 µg/ml

**Lane 2** : Anti-APC2 antibody (ab106600) at 2 µg/ml

**All lanes** : HeLa cell lysate

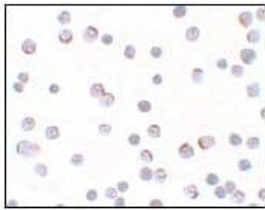
Lysates/proteins at 15 µg per lane.

**Predicted band size:** 244 kDa



Immunofluorescence of APC2 in HeLa cells with ab106600 at 20 ug/mL.

Immunocytochemistry/ Immunofluorescence - Anti-APC2 antibody (ab106600)



Immunocytochemical analysis of ab106600 at 5 ug/ml in HeLa cells.

Immunocytochemistry - Anti-APC2 antibody (ab106600)

**Please note:** All products are "FOR RESEARCH USE ONLY. NOT FOR USE IN DIAGNOSTIC PROCEDURES"

### **Our Abpromise to you: Quality guaranteed and expert technical support**

---

- Replacement or refund for products not performing as stated on the datasheet
- Valid for 12 months from date of delivery
- Response to your inquiry within 24 hours
- We provide support in Chinese, English, French, German, Japanese and Spanish
- Extensive multi-media technical resources to help you
- We investigate all quality concerns to ensure our products perform to the highest standards

If the product does not perform as described on this datasheet, we will offer a refund or replacement. For full details of the Abpromise, please visit <https://www.abcam.com/abpromise> or contact our technical team.

## Terms and conditions

---

- Guarantee only valid for products bought direct from Abcam or one of our authorized distributors