

## Product datasheet

# Anti-APOBEC2 antibody [EPR11285(B)] ab157205

Recombinant RabMAb

[1 References](#) [6 Images](#)

### Overview

<b>Product name</b>	Anti-APOBEC2 antibody [EPR11285(B)]
<b>Description</b>	Rabbit monoclonal [EPR11285(B)] to APOBEC2
<b>Host species</b>	Rabbit
<b>Tested applications</b>	<b>Suitable for:</b> WB, IHC-P <b>Unsuitable for:</b> IP
<b>Species reactivity</b>	<b>Reacts with:</b> Mouse, Rat, Human
<b>Immunogen</b>	Synthetic peptide. This information is proprietary to Abcam and/or its suppliers.
<b>Positive control</b>	fetal muscle and fetal heart lysates; rat muscle lysate; mouse muscle lysate; skeletal muscle tissue.
<b>General notes</b>	<p>This product is a recombinant monoclonal antibody, which offers several advantages including:</p> <ul style="list-style-type: none"><li>- High batch-to-batch consistency and reproducibility</li><li>- Improved sensitivity and specificity</li><li>- Long-term security of supply</li><li>- Animal-free production</li></ul> <p>For more information <a href="#">see here</a>.</p> <p>Our RabMAb<sup>®</sup> technology is a patented hybridoma-based technology for making rabbit monoclonal antibodies. For details on our patents, please refer to <a href="#">RabMAb<sup>®</sup> patents</a>.</p>

### Properties

<b>Form</b>	Liquid
<b>Storage instructions</b>	Shipped at 4°C. Store at -20°C.
<b>Storage buffer</b>	pH: 7.2 Preservative: 0.01% Sodium azide Constituents: 9% PBS, 40% Glycerol (glycerin, glycerine), 0.05% BSA, 50% Tissue culture supernatant
<b>Purity</b>	Tissue culture supernatant
<b>Clonality</b>	Monoclonal
<b>Clone number</b>	EPR11285(B)

Isotype

IgG

## Applications

### The Abpromise guarantee

Our **Abpromise guarantee** covers the use of ab157205 in the following tested applications.

The application notes include recommended starting dilutions; optimal dilutions/concentrations should be determined by the end user.

Application	Abreviews	Notes
WB		1/10000 - 1/50000. Predicted molecular weight: 26 kDa.
IHC-P		1/100 - 1/250. Perform heat mediated antigen retrieval with citrate buffer pH 6 before commencing with IHC staining protocol.

### Application notes

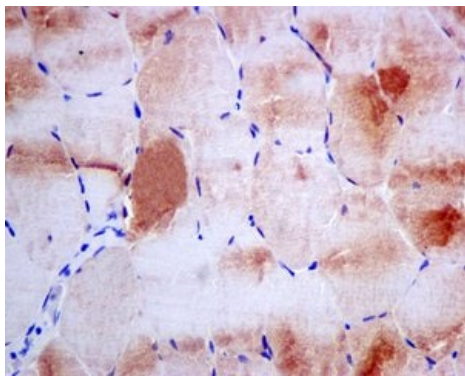
Is unsuitable for IP.

## Target

### Relevance

APOBEC2 belongs to the cytidine and deoxycytidylate deaminase family. It is probable C to U editing enzyme whose physiological substrate is not yet known. It does not display detectable apoB mRNA editing and has a low intrinsic cytidine deaminase activity.

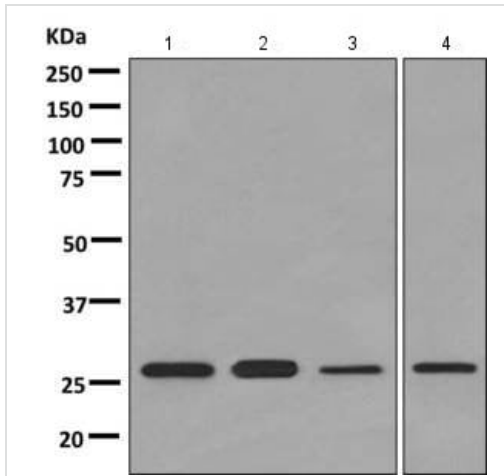
## Images



Immunohistochemistry (Formalin/PFA-fixed paraffin-embedded sections) - Anti-APOBEC2 antibody [EPR11285(B)] (ab157205)

Immunohistochemical analysis of formalin-fixed, paraffin-embedded Human skeletal muscle tissue, labeling APOBEC2 using ab157205 at a 1/100 dilution.

Perform heat mediated antigen retrieval with citrate buffer pH 6 before commencing with IHC staining protocol.



Western blot - Anti-APOBEC2 antibody  
[EPR11285(B)] (ab157205)

**All lanes** : Anti-APOBEC2 antibody [EPR11285(B)] (ab157205) at 1/10000 dilution

**Lane 1** : Fetal human muscle tissue lysate

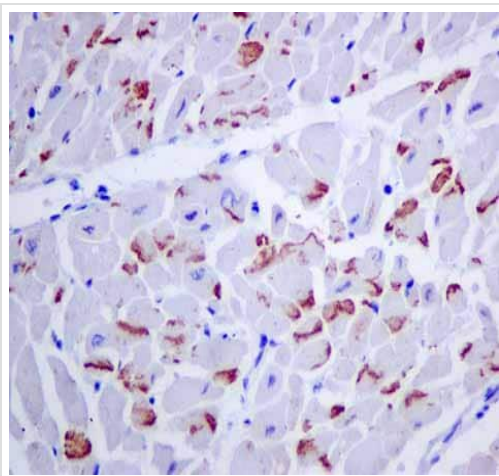
**Lane 2** : Rat muscle tissue lysate

**Lane 3** : Mouse muscle tissue lysate

**Lane 4** : Fetal human heart tissue lysate

Lysates/proteins at 10 µg per lane.

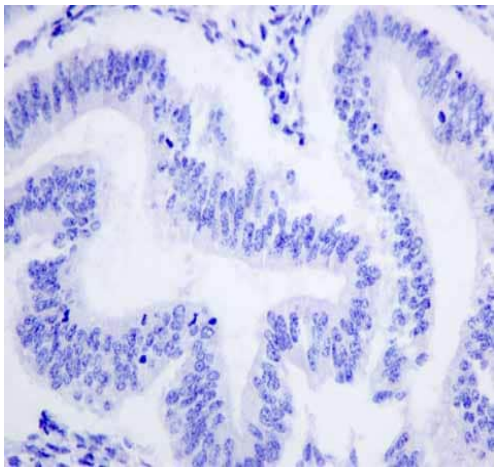
**Predicted band size:** 26 kDa



Immunohistochemistry (Formalin/PFA-fixed paraffin-embedded sections) - Anti-APOBEC2 antibody  
[EPR11285(B)] (ab157205)

ab157205 showing +ve staining in Human heart.

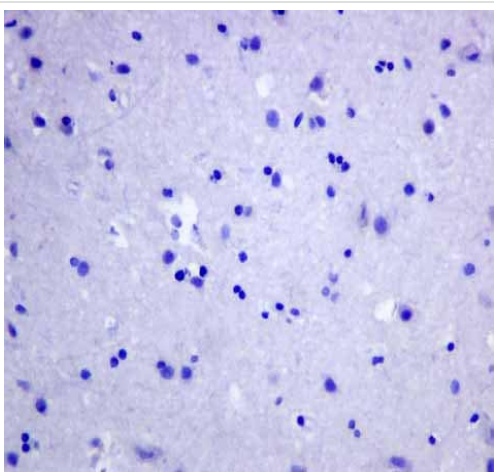
Perform heat mediated antigen retrieval with citrate buffer pH 6 before commencing with IHC staining protocol.



Immunohistochemistry (Formalin/PFA-fixed paraffin-embedded sections) - Anti-APOBEC2 antibody [EPR11285(B)] (ab157205)

ab157205 showing -ve staining in Human normal uterus.

Perform heat mediated antigen retrieval with citrate buffer pH 6 before commencing with IHC staining protocol.







Immunohistochemistry (Formalin/PFA-fixed paraffin-embedded sections) - Anti-APOBEC2 antibody [EPR11285(B)] (ab157205)

ab157205 showing -ve staining in Human normal brain.

Perform heat mediated antigen retrieval with citrate buffer pH 6 before commencing with IHC staining protocol.

Why choose a recombinant antibody?

 <p><b>Research with confidence</b> Consistent and reproducible results</p>	 <p><b>Long-term and scalable supply</b> Recombinant technology</p>
 <p><b>Success from the first experiment</b> Confirmed specificity</p>	 <p><b>Ethical standards compliant</b> Animal-free production</p>

Anti-APOBEC2 antibody [EPR11285(B)] (ab157205)

**Please note:** All products are "FOR RESEARCH USE ONLY. NOT FOR USE IN DIAGNOSTIC PROCEDURES"

### Our Abpromise to you: Quality guaranteed and expert technical support

---

- Replacement or refund for products not performing as stated on the datasheet
- Valid for 12 months from date of delivery
- Response to your inquiry within 24 hours
- We provide support in Chinese, English, French, German, Japanese and Spanish
- Extensive multi-media technical resources to help you
- We investigate all quality concerns to ensure our products perform to the highest standards

If the product does not perform as described on this datasheet, we will offer a refund or replacement. For full details of the Abpromise, please visit <https://www.abcam.com/abpromise> or contact our technical team.

### Terms and conditions

---

- Guarantee only valid for products bought direct from Abcam or one of our authorized distributors