

Product datasheet

Anti-APOF antibody [EPR2908] ab92301

Recombinant RabMAb

[1 References](#) [2 Images](#)

Overview

Product name	Anti-APOF antibody [EPR2908]
Description	Rabbit monoclonal [EPR2908] to APOF
Host species	Rabbit
Tested applications	Suitable for: WB Unsuitable for: Flow Cyt, IHC-P or IP
Species reactivity	Reacts with: Human
Immunogen	Synthetic peptide within Human APOF aa 150-250. The exact sequence is proprietary.
Positive control	HDL and Human plasma lysate
General notes	<p>This product is a recombinant monoclonal antibody, which offers several advantages including:</p> <ul style="list-style-type: none"> - High batch-to-batch consistency and reproducibility - Improved sensitivity and specificity - Long-term security of supply - Animal-free production <p>For more information see here.</p> <p>Our RabMAb[®] technology is a patented hybridoma-based technology for making rabbit monoclonal antibodies. For details on our patents, please refer to RabMAb[®] patents.</p> <p>Rat: We have preliminary internal testing data to indicate this antibody may not react with this species. Please contact us for more information.</p>

Properties

Form	Liquid
Storage instructions	Shipped at 4°C. Store at -20°C. Stable for 12 months at -20°C.
Storage buffer	pH: 7.20 Preservative: 0.01% Sodium azide Constituents: 9% PBS, 40% Glycerol (glycerin, glycerine), 0.05% BSA, 50% Tissue culture supernatant
Purity	Tissue culture supernatant
Clonality	Monoclonal

Clone number EPR2908

Isotype IgG

Applications

The Abpromise guarantee Our **Abpromise guarantee** covers the use of ab92301 in the following tested applications. The application notes include recommended starting dilutions; optimal dilutions/concentrations should be determined by the end user.

Application	Abreviews	Notes
WB		1/1000 - 1/10000. Predicted molecular weight: 33 kDa.

Application notes Is unsuitable for Flow Cyt, IHC-P or IP.

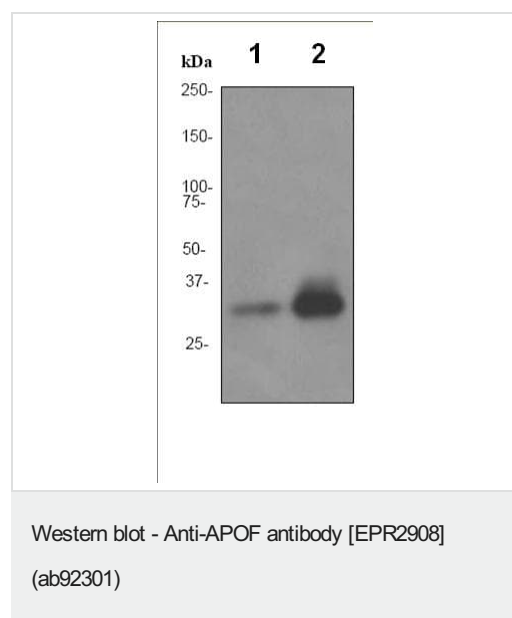
Target

Function Minor apolipoprotein that associates with LDL. Inhibits cholesteryl ester transfer protein (CETP) activity and appears to be an important regulator of cholesterol transport. Also associates to a lesser degree with VLDL, Apo-AI and Apo-AII.

Tissue specificity Expressed by the liver and secreted in plasma.

Cellular localization Secreted.

Images



All lanes : Anti-APOF antibody [EPR2908] (ab92301) at 1/2000 dilution

Lane 1 : HDL lysate

Lane 2 : Human plasma lysate

Lysates/proteins at 10 µg per lane.

Predicted band size: 33 kDa

Why choose a recombinant antibody?



Research with confidence
Consistent and reproducible results



Long-term and scalable supply
Recombinant technology



Success from the first experiment
Confirmed specificity



Ethical standards compliant
Animal-free production

Anti-APOF antibody [EPR2908] (ab92301)

Please note: All products are "FOR RESEARCH USE ONLY. NOT FOR USE IN DIAGNOSTIC PROCEDURES"

Our Abpromise to you: Quality guaranteed and expert technical support

- Replacement or refund for products not performing as stated on the datasheet
- Valid for 12 months from date of delivery
- Response to your inquiry within 24 hours
- We provide support in Chinese, English, French, German, Japanese and Spanish
- Extensive multi-media technical resources to help you
- We investigate all quality concerns to ensure our products perform to the highest standards

If the product does not perform as described on this datasheet, we will offer a refund or replacement. For full details of the Abpromise, please visit <https://www.abcam.com/abpromise> or contact our technical team.

Terms and conditions

- Guarantee only valid for products bought direct from Abcam or one of our authorized distributors