

Product datasheet

Anti-Apolipoprotein L1/APOL1 antibody [EPR2907(2)] ab108315

Recombinant RabMAb

★★★★★ 1 Abreviews 14 References 5 Images

Overview

Product name	Anti-Apolipoprotein L1/APOL1 antibody [EPR2907(2)]
Description	Rabbit monoclonal [EPR2907(2)] to Apolipoprotein L1/APOL1
Host species	Rabbit
Tested applications	Suitable for: WB, IP, Flow Cyt (Intra), ICC/IF Unsuitable for: IHC-P
Species reactivity	Reacts with: Human
Immunogen	Synthetic peptide. This information is proprietary to Abcam and/or its suppliers.
Positive control	Human plasma, ovary cancer, and HepG2 cell lysates. ICC/IF: BxPC-3 cells.
General notes	<p>This product is a recombinant monoclonal antibody, which offers several advantages including:</p> <ul style="list-style-type: none"> - High batch-to-batch consistency and reproducibility - Improved sensitivity and specificity - Long-term security of supply - Animal-free production <p>For more information see here.</p> <p>Our RabMAb[®] technology is a patented hybridoma-based technology for making rabbit monoclonal antibodies. For details on our patents, please refer to RabMAb[®] patents.</p> <p>Mouse, Rat: We have preliminary internal testing data to indicate this antibody may not react with these species. Please contact us for more information.</p>

Properties

Form	Liquid
Storage instructions	Shipped at 4°C. Store at -20°C. Stable for 12 months at -20°C.
Storage buffer	<p>pH: 7.20</p> <p>Preservative: 0.01% Sodium azide</p> <p>Constituents: 9% PBS, 40% Glycerol (glycerin, glycerine), 0.05% BSA, 50% Tissue culture supernatant</p>
Purity	Protein A purified

Clonality	Monoclonal
Clone number	EPR2907(2)
Isotype	IgG

Applications

The Abpromise guarantee Our **Abpromise guarantee** covers the use of ab108315 in the following tested applications. The application notes include recommended starting dilutions; optimal dilutions/concentrations should be determined by the end user.

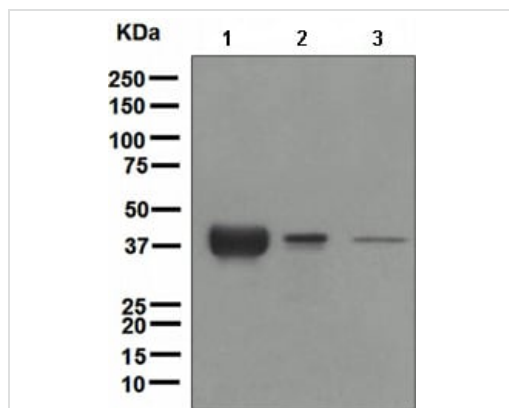
Application	Abreviews	Notes
WB	★★★★★ (1)	1/1000 - 1/10000. Predicted molecular weight: 44 kDa.
IP		1/10 - 1/100.
Flow Cyt (Intra)		1/10 - 1/100. ab172730 - Rabbit monoclonal IgG, is suitable for use as an isotype control with this antibody.
ICC/IF		1/50.

Application notes Is unsuitable for IHC-P.

Target

Function	May play a role in lipid exchange and transport throughout the body. May participate in reverse cholesterol transport from peripheral cells to the liver.
Tissue specificity	Plasma. Found on APOA-I-containing high density lipoprotein (HDL3). Expressed in pancreas, lung, prostate, liver, placenta and spleen.
Involvement in disease	Defects in APOL1 are the cause of focal segmental glomerulosclerosis type 4 (FSGS4) [MIM:612551]. It is a renal pathology defined by the presence of segmental sclerosis in glomeruli and resulting in proteinuria, reduced glomerular filtration rate and edema. Renal insufficiency often progresses to end-stage renal disease, a highly morbid state requiring either dialysis therapy or kidney transplantation.
Sequence similarities	Belongs to the apolipoprotein L family.
Post-translational modifications	Phosphorylation sites are present in the extracellular medium.
Cellular localization	Secreted.

Images



Western blot - Anti-Apolipoprotein L1/APOL1 antibody [EPR2907(2)] (ab108315)

All lanes : Anti-Apolipoprotein L1/APOL1 antibody [EPR2907(2)] (ab108315) at 1/1000 dilution

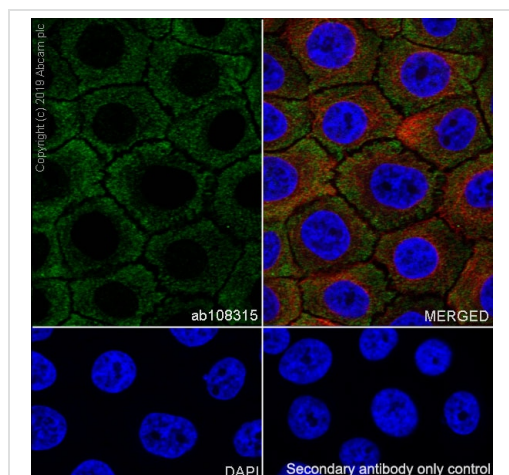
Lane 1 : Human plasma lysate

Lane 2 : Human ovary cancer lysate

Lane 3 : HepG2 cell lysate

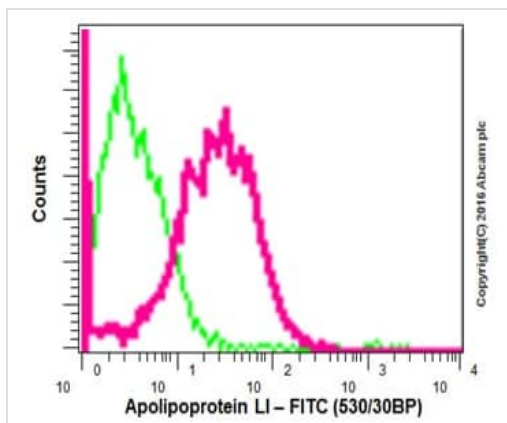
Lysates/proteins at 10 µg per lane.

Predicted band size: 44 kDa



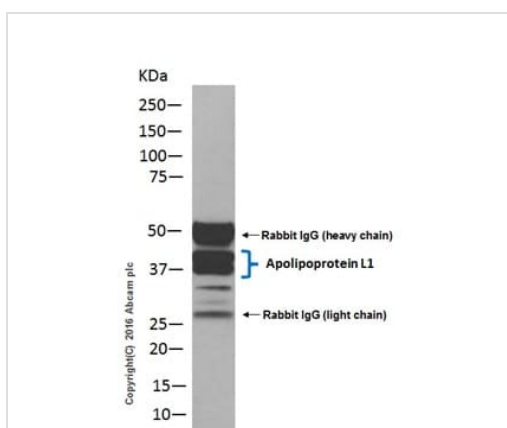
Immunocytochemistry/ Immunofluorescence - Anti-Apolipoprotein L1/APOL1 antibody [EPR2907(2)] (ab108315)

Immunocytochemistry/ Immunofluorescence analysis of BxPC-3 (human pancreas adenocarcinoma epithelial cell) cells labeling Apolipoprotein L1/APOL1 with purified ab108315 at 1/50 dilution (9.2 µg/mL). Cells were fixed in 4% Paraformaldehyde and permeabilized with 0.1% tritonX-100. Cells were counterstained with **ab195889** Anti-alpha Tubulin antibody [DM1A] - Microtubule Marker (Alexa Fluor® 594) 1/200 (2.5 µg/mL). Goat anti rabbit IgG (Alexa Fluor® 488, **ab150077**) was used as the secondary antibody at 1/1000 (2 µg/mL) dilution. DAPI (blue) was used as nuclear counterstain. **ab195889** Anti-alpha Tubulin antibody [DM1A] - Microtubule Marker (Alexa Fluor® 594) 1/200 (2.5 µg/mL) was used as the secondary antibody only control.



Flow Cytometry (Intracellular) - Anti-Apolipoprotein L1/APOL1 antibody [EPR2907(2)] (ab108315)

Intracellular flow cytometric analysis of 2% paraformaldehyde-fixed HepG2 (Human hepatocellular carcinoma) cell line labeling Apolipoprotein L 1/APOL1 with ab108315 at 1/70 dilution (red) compared with a Rabbit IgG, monoclonal [EPR25A] - Isotype Control (**ab172730**) (Green). Goat anti Rabbit IgG (FITC) at 1/150 dilution was used as the secondary antibody.



Immunoprecipitation - Anti-Apolipoprotein L1/APOL1 antibody [EPR2907(2)] (ab108315)

Apolipoprotein L 1/APOL1 was immunoprecipitated from 1mg of Human plasma with ab108315 at 1/40 dilution.

Western blot was performed from the immunoprecipitate using ab108315 at 1/1000 dilution.

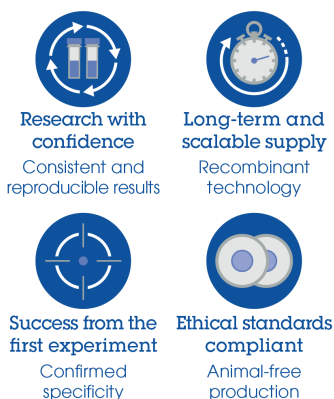
Goat Anti-Rabbit IgG peroxidase conjugated, was used as secondary antibody at 1/1000 dilution.

Lane 1: Human plasma

Blocking and dilution buffer and concentration: 5% NFDM/TBST.

Exposure time: 10 seconds.

Why choose a recombinant antibody?



Anti-Apolipoprotein L1/APOL1 antibody [EPR2907(2)] (ab108315)

Our Abpromise to you: Quality guaranteed and expert technical support

- Replacement or refund for products not performing as stated on the datasheet
- Valid for 12 months from date of delivery
- Response to your inquiry within 24 hours

- We provide support in Chinese, English, French, German, Japanese and Spanish
- Extensive multi-media technical resources to help you
- We investigate all quality concerns to ensure our products perform to the highest standards

If the product does not perform as described on this datasheet, we will offer a refund or replacement. For full details of the Abpromise, please visit <https://www.abcam.com/abpromise> or contact our technical team.

Terms and conditions

- Guarantee only valid for products bought direct from Abcam or one of our authorized distributors