


Anti-Aquaporin 1 antibody ab87845

1 Image

Overview

Product name	Anti-Aquaporin 1 antibody
Description	Rabbit polyclonal to Aquaporin 1
Host species	Rabbit
Tested applications	Suitable for: WB
Species reactivity	Reacts with: Human Predicted to work with: Mouse, Rat, Sheep, Cow, Orangutan 
Immunogen	Synthetic peptide. This information is proprietary to Abcam and/or its suppliers.
Positive control	Recombinant Human Aquaporin 1 protein (ab114210) can be used as a positive control in WB. This antibody gave a positive signal in both HEK293 and Jurkat whole cell lysates as well as the following tissue lysates: Human pancreas; Human heart; Human skeletal muscle.
General notes	<p>The Life Science industry has been in the grips of a reproducibility crisis for a number of years. Abcam is leading the way in addressing this with our range of recombinant monoclonal antibodies and knockout edited cell lines for gold-standard validation. Please check that this product meets your needs before purchasing.</p> <p>If you have any questions, special requirements or concerns, please send us an inquiry and/or contact our Support team ahead of purchase. Recommended alternatives for this product can be found below, along with publications, customer reviews and Q&As</p>

Properties

Form	Liquid
Storage instructions	Shipped at 4°C. Store at +4°C short term (1-2 weeks). Upon delivery aliquot. Store at -20°C or -80°C. Avoid freeze / thaw cycle.
Storage buffer	<p>pH: 7.40</p> <p>Preservative: 0.02% Sodium azide</p> <p>Constituent: PBS</p> <p>Batches of this product that have a concentration < 1mg/ml may have BSA added as a stabilising agent. If you would like information about the formulation of a specific lot, please contact our scientific support team who will be happy to help.</p>
Purity	Immunogen affinity purified

Clonality	Polyclonal
Isotype	IgG

Applications

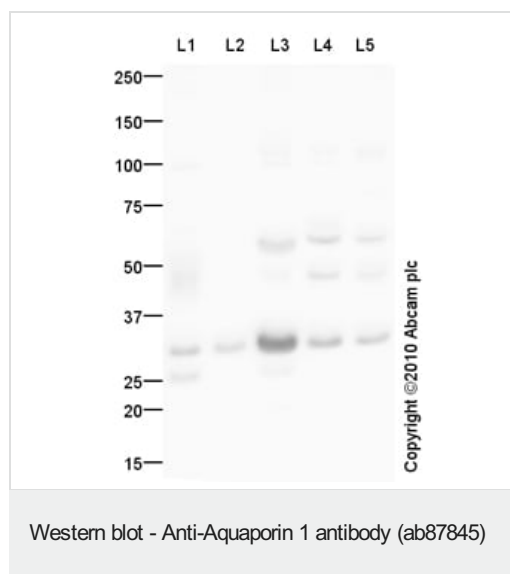
The Abpromise guarantee Our **Abpromise guarantee** covers the use of ab87845 in the following tested applications. The application notes include recommended starting dilutions; optimal dilutions/concentrations should be determined by the end user.

Application	Abreviews	Notes
WB		Use a concentration of 1 µg/ml. Detects a band of approximately 31 kDa (predicted molecular weight: 28 kDa).

Target

Function	Forms a water-specific channel that provides the plasma membranes of red cells and kidney proximal tubules with high permeability to water, thereby permitting water to move in the direction of an osmotic gradient.
Tissue specificity	Expressed in a number of tissues including erythrocytes, renal tubules, retinal pigment epithelium, heart, lung, skeletal muscle, kidney and pancreas. Weakly expressed in brain, placenta and liver.
Sequence similarities	Belongs to the MIP/aquaporin (TC 1.A.8) family.
Domain	Aquaporins contain two tandem repeats each containing three membrane-spanning domains and a pore-forming loop with the signature motif Asn-Pro-Ala (NPA).
Cellular localization	Membrane.

Images



All lanes : Anti-Aquaporin 1 antibody (ab87845) at 1 µg/ml

Lane 1 : Human heart tissue lysate - total protein ([ab29431](#))

Lane 2 : Human pancreas tissue lysate - total protein ([ab29816](#))

Lane 3 : Human skeletal muscle tissue lysate - total protein ([ab29330](#))

Lane 4 : HEK293 (Human embryonic kidney cell line) Whole Cell Lysate

Lane 5 : Jurkat (Human T cell lymphoblast-like cell line) Whole Cell Lysate

Lysates/proteins at 10 µg per lane.

Secondary

All lanes : Goat polyclonal to Rabbit IgG - H&L - Pre-Adsorbed (HRP) at 1/3000 dilution

Developed using the ECL technique.

Performed under reducing conditions.

Predicted band size: 28 kDa

Observed band size: 31 kDa

Additional bands at: 25 kDa, 55 kDa. We are unsure as to the identity of these extra bands.

Exposure time: 3 minutes

Human Aquaporin-1 contains a number of potential glycosylation sites (SwissProt) which may explain its migration at a higher molecular weight than predicted.

Please note: All products are "FOR RESEARCH USE ONLY. NOT FOR USE IN DIAGNOSTIC PROCEDURES"

Our Abpromise to you: Quality guaranteed and expert technical support

- Replacement or refund for products not performing as stated on the datasheet
- Valid for 12 months from date of delivery
- Response to your inquiry within 24 hours
- We provide support in Chinese, English, French, German, Japanese and Spanish
- Extensive multi-media technical resources to help you
- We investigate all quality concerns to ensure our products perform to the highest standards

If the product does not perform as described on this datasheet, we will offer a refund or replacement. For full details of the Abpromise, please visit <https://www.abcam.com/abpromise> or contact our technical team.

Terms and conditions

- Guarantee only valid for products bought direct from Abcam or one of our authorized distributors