

## Product datasheet

### Anti-ARD1A antibody [3G3B9] ab234076

[5 Images](#)

#### Overview

---

<b>Product name</b>	Anti-ARD1A antibody [3G3B9]
<b>Description</b>	Mouse monoclonal [3G3B9] to ARD1A
<b>Host species</b>	Mouse
<b>Tested applications</b>	<b>Suitable for:</b> WB, Flow Cyt, ICC/IF
<b>Species reactivity</b>	<b>Reacts with:</b> Mouse, Human, African green monkey, Recombinant fragment
<b>Immunogen</b>	Recombinant fragment corresponding to Human ARD1A aa 111-235. Expressed in E. coli. Database link: <a href="#">P41227</a>
<b>Positive control</b>	Flow Cytometry: SMMC-7721 cells. ICC/IF: HeLa cells. WB: COS-7, HEK-293, HL-60, MCF7, HeLa, NIH/3T3, and C2C12 cell lysates; Recombinant human ARD1A (amino acids 111-235) protein; Human ARD1A (amino acids 111-235)-hlgGfc transfected HEK-293 cell lysate.
<b>General notes</b>	<p>The Life Science industry has been in the grips of a reproducibility crisis for a number of years. Abcam is leading the way in addressing this with our range of recombinant monoclonal antibodies and knockout edited cell lines for gold-standard validation. Please check that this product meets your needs before purchasing.</p> <p>If you have any questions, special requirements or concerns, please send us an inquiry and/or contact our Support team ahead of purchase. Recommended alternatives for this product can be found below, along with publications, customer reviews and Q&amp;As</p>

#### Properties

---

<b>Form</b>	Liquid
<b>Storage instructions</b>	Shipped at 4°C. Store at +4°C short term (1-2 weeks). Upon delivery aliquot. Store at -20°C long term. Avoid freeze / thaw cycle.
<b>Storage buffer</b>	Preservative: 0.05% Sodium azide Constituent: PBS
<b>Purity</b>	Protein G purified
<b>Purification notes</b>	Purified from tissue culture supernatant.
<b>Clonality</b>	Monoclonal
<b>Clone number</b>	3G3B9
<b>Isotype</b>	IgG1

## Applications

### The Abpromise guarantee

Our **Abpromise guarantee** covers the use of ab234076 in the following tested applications.

The application notes include recommended starting dilutions; optimal dilutions/concentrations should be determined by the end user.

Application	Abreviews	Notes
WB		1/100 - 1/500. Predicted molecular weight: 26 kDa.
Flow Cyt		1/200 - 1/400.
ICC/IF		1/200 - 1/1000.

## Target

### Function

In complex with NAA15, displays alpha (N-terminal) acetyltransferase activity. Without NAA15, displays epsilon (internal) acetyltransferase activity towards HIF1A, thereby promoting its degradation.

### Tissue specificity

Ubiquitous.

### Sequence similarities

Belongs to the acetyltransferase family. ARD1 subfamily.  
Contains 1 N-acetyltransferase domain.

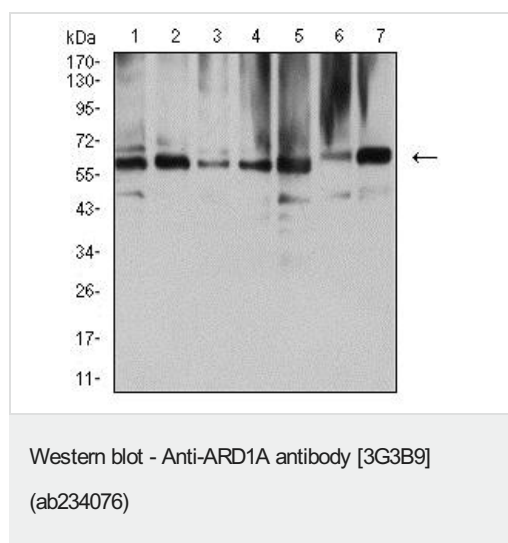
### Post-translational modifications

Cleaved by caspases during apoptosis.

### Cellular localization

Cytoplasm. Nucleus. According to PubMed:12464182 it is cytoplasmic. According to PubMed:15496142, it is nuclear and cytoplasmic. Also present in the free cytosolic and cytoskeleton-bound polysomes.

## Images



**All lanes :** Anti-ARD1A antibody [3G3B9] (ab234076) at 1/100 dilution

**Lane 1 :** COS-7 (African green monkey kidney fibroblast-like cell line) cell lysate

**Lane 2 :** HEK-293 (human epithelial cell line from embryonic kidney) cell lysate

**Lane 3 :** HL-60 (human promyelocytic leukemia cell line) cell lysate

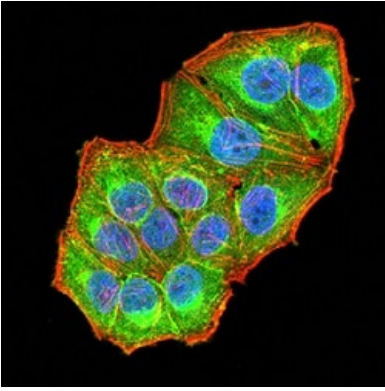
**Lane 4 :** MCF7 (human breast adenocarcinoma cell line) cell lysate

**Lane 5 :** HeLa (human epithelial cell line from cervix adenocarcinoma) cell lysate

**Lane 6 :** NIH-3T3 (mouse embryo fibroblast cell line) cell lysate

**Lane 7 :** C2C12 (mouse myoblast cell line) cell lysate

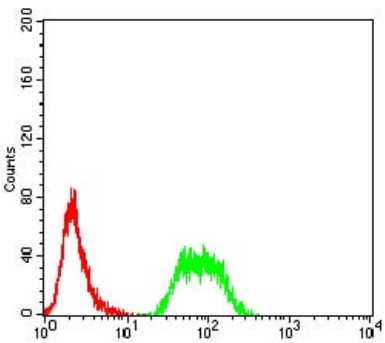
**Predicted band size:** 26 kDa



Immunocytochemistry/ Immunofluorescence - Anti-ARD1A antibody [3G3B9] (ab234076)

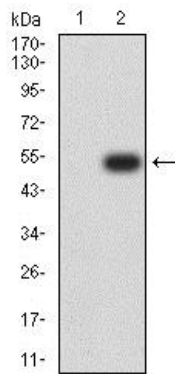
HeLa (human epithelial cell line from cervix adenocarcinoma) cells stained for ARD1A (green) using ab234076 at 1/200 dilution in ICC/IF.

Blue: DRAQ5 fluorescent DNA dye. Red: Actin filaments have been labeled with AlexaFluor<sup>®</sup>555-Phalloidin.



Flow Cytometry - Anti-ARD1A antibody [3G3B9] (ab234076)

Flow Cytometry analysis of SMMC-7721 (human hepatocarcinoma cell line) cells, labeling ARD1A with ab234076 at a 1/200 dilution (green) compared to a negative control (red).



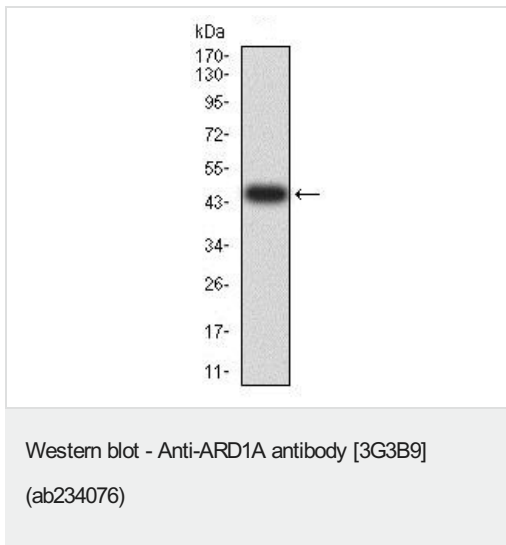
Western blot - Anti-ARD1A antibody [3G3B9] (ab234076)

**All lanes** : Anti-ARD1A antibody [3G3B9] (ab234076) at 1/100 dilution

**Lane 1** : HEK-293 (human epithelial cell line from embryonic kidney) cell lysate

**Lane 2** : Human ARD1A (amino acids 111-235)-hlgGFc transfected HEK-293 cell lysate

**Predicted band size:** 26 kDa



Anti-ARD1A antibody [3G3B9] (ab234076) at 1/100 dilution +  
Recombinant human ARD1A (amino acids 111-235) protein

**Predicted band size:** 26 kDa

Expected recombinant MW is 47.2 kDa

**Please note:** All products are "FOR RESEARCH USE ONLY. NOT FOR USE IN DIAGNOSTIC PROCEDURES"

### Our Abpromise to you: Quality guaranteed and expert technical support

---

- Replacement or refund for products not performing as stated on the datasheet
- Valid for 12 months from date of delivery
- Response to your inquiry within 24 hours
- We provide support in Chinese, English, French, German, Japanese and Spanish
- Extensive multi-media technical resources to help you
- We investigate all quality concerns to ensure our products perform to the highest standards

If the product does not perform as described on this datasheet, we will offer a refund or replacement. For full details of the Abpromise, please visit <https://www.abcam.com/abpromise> or contact our technical team.

### Terms and conditions

---

- Guarantee only valid for products bought direct from Abcam or one of our authorized distributors