

Product datasheet

Anti-ARF1 + ARF3 antibody [EP442Y] ab32524

Recombinant RabMAb

[7 References](#) [9 Images](#)

Overview

Product name	Anti-ARF1 + ARF3 antibody [EP442Y]
Description	Rabbit monoclonal [EP442Y] to ARF1 + ARF3
Host species	Rabbit
Specificity	The immunogen used for this product shares 100% homology with ARF3, ARF4 and ARF5. Cross-reactivity with the latter two protein have not been confirmed experimentally.
Tested applications	Suitable for: Flow Cyt (Intra), WB, IHC-P, ICC/IF Unsuitable for: IP
Species reactivity	Reacts with: Mouse, Rat, Human
Immunogen	Synthetic peptide within Human ARF1 aa 50-150. The exact sequence is proprietary.
Positive control	HEK-293 cell lysates and human breast carcinoma tissue.
General notes	This product is a recombinant monoclonal antibody, which offers several advantages including: <ul style="list-style-type: none"> - High batch-to-batch consistency and reproducibility - Improved sensitivity and specificity - Long-term security of supply - Animal-free production For more information see here . Our RabMAb [®] technology is a patented hybridoma-based technology for making rabbit monoclonal antibodies. For details on our patents, please refer to RabMAb[®] patents .

Properties

Form	Liquid
Storage instructions	Shipped at 4°C. Upon delivery aliquot and store at -20°C. Avoid freeze / thaw cycles.
Storage buffer	pH: 7.20 Preservative: 0.01% Sodium azide Constituents: 49% PBS, 50% Glycerol (glycerin, glycerine), 0.05% BSA
Purity	Protein A purified
Clonality	Monoclonal
Clone number	EP442Y

Applications

The Abpromise guarantee

Our **Abpromise guarantee** covers the use of ab32524 in the following tested applications.

The application notes include recommended starting dilutions; optimal dilutions/concentrations should be determined by the end user.

Application	Abreviews	Notes
Flow Cyt (Intra)		1/80. ab172730 - Rabbit monoclonal IgG, is suitable for use as an isotype control with this antibody.
WB		1/2000. Detects a band of approximately 20 kDa (predicted molecular weight: 21 kDa).
IHC-P		Use at an assay dependent concentration. Perform heat mediated antigen retrieval with citrate buffer pH 6 before commencing with IHC staining protocol.
ICC/IF		1/500.

Application notes

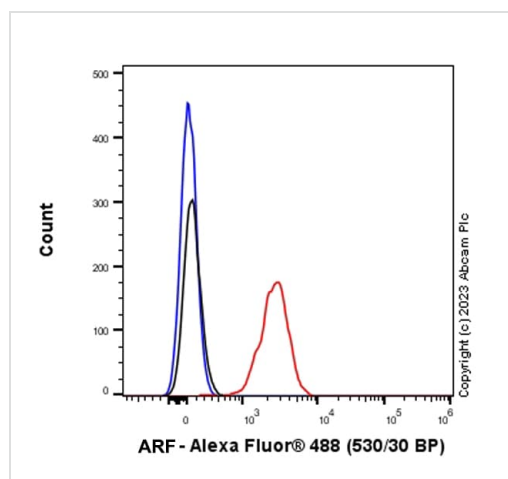
Is unsuitable for IP.

Target

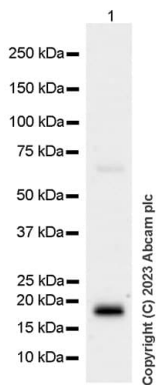
Cellular localization

ARF1: Golgi apparatus. Cytoplasm > perinuclear region. ARF3: Golgi apparatus. Cytoplasm > perinuclear region.

Images



Flow Cytometry - Anti-ARF1 + ARF3 antibody
[EP442Y] (ab32524)



Western blot - Anti-ARF1 + ARF3 antibody [EP442Y] (ab32524)

Anti-ARF1 + ARF3 antibody [EP442Y] (ab32524) at 1/1000 dilution + MCF7 (human breast adenocarcinoma epithelial cell) whole cell lysate at 20 μ g

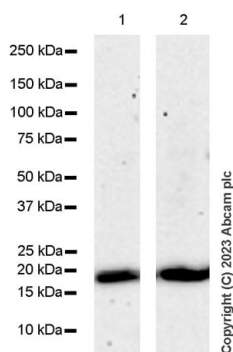
Secondary

Goat Anti-Rabbit IgG H&L (HRP) ([ab97051](#)) at 1/100000 dilution

Predicted band size: 21 kDa

Observed band size: 20 kDa

Blocking and diluting buffer: 5% NFDm/TBST. Lysate was freshly made and used for Western blotting immediately to minimize protein degradation.



Western blot - Anti-ARF1 + ARF3 antibody [EP442Y] (ab32524)

All lanes : Anti-ARF1 + ARF3 antibody [EP442Y] (ab32524) at 1/1000 dilution

Lane 1 : SiHa (human cervical epithelial cell) whole cell lysate

Lane 2 : T-47D (human ductal breast epithelial tumor epithelial cell) whole cell lysate

Lysates/proteins at 50 μ g per lane.

Secondary

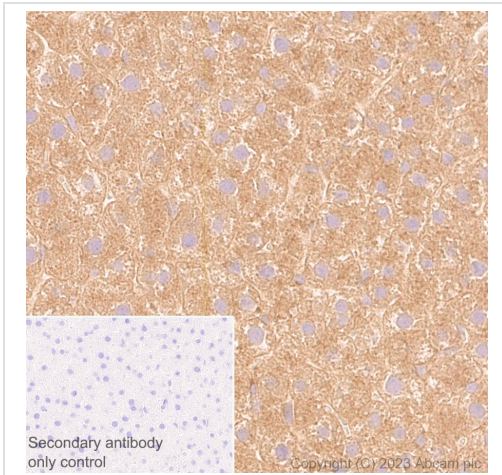
All lanes : Goat Anti-Rabbit IgG H&L (HRP) ([ab97051](#)) at 1/100000 dilution

Predicted band size: 21 kDa

Observed band size: 20 kDa

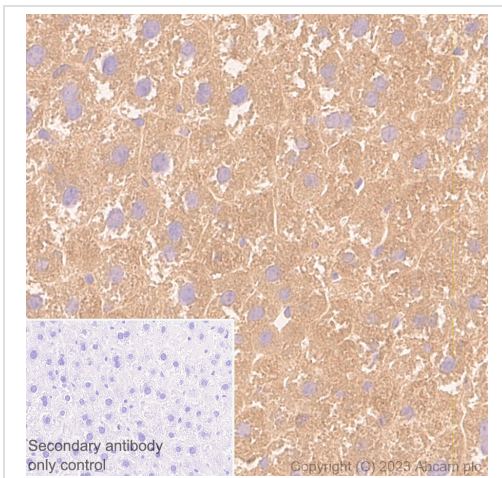
Exposure time: 180 seconds

Blocking and diluting buffer: 5% NFDm/TBST



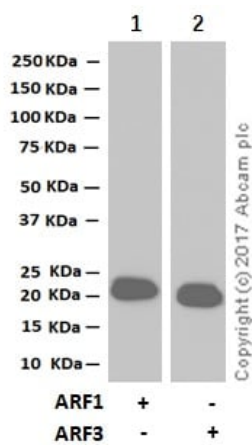
Immunohistochemistry (Formalin/PFA-fixed paraffin-embedded sections) - Anti-ARF1 + ARF3 antibody [EP442Y] (ab32524)

Immunohistochemistry analysis of paraffin-embedded rat liver tissue sections using ab32524 at 1/2000 dilution and ready to use secondary LeicaDS9800 (Bond™ Polymer Refine Detection). Counterstained with Hematoxylin. Heat mediated antigen retrieval was performed with Tris-EDTA buffer (pH 9.0, Epitope Retrieval Solution2) for 20 mins. Positive staining on rat liver. The section was incubated with ab32524 for 30 mins at room temperature. The immunostaining was performed on a Leica Biosystems BOND® RX instrument



Immunohistochemistry (Formalin/PFA-fixed paraffin-embedded sections) - Anti-ARF1 + ARF3 antibody [EP442Y] (ab32524)

Immunohistochemistry analysis of paraffin-embedded mouse liver tissue sections using ab32524 at 1/2000 dilution and ready to use secondary LeicaDS9800 (Bond™ Polymer Refine Detection). Counterstained with Hematoxylin. Heat mediated antigen retrieval was performed with Tris-EDTA buffer (pH 9.0, Epitope Retrieval Solution2) for 20 mins. Positive staining on mouse liver. The section was incubated with ab32524 for 30 mins at room temperature. The immunostaining was performed on a Leica Biosystems BOND® RX instrument



Western blot - Anti-ARF1 + ARF3 antibody
[EP442Y] (ab32524)

All lanes : Anti-ARF1 + ARF3 antibody [EP442Y] (ab32524) at 1/20000 dilution

Lane 1 : Full length human ARF-1 recombinant protein

Lane 2 : Full length human ARF-3 recombinant protein

Lysates/proteins at 0.015 µg per lane.

Secondary

All lanes : Goat Anti-Rabbit IgG H&L (HRP) ([ab97051](#)) at 1/20000 dilution

Predicted band size: 21 kDa

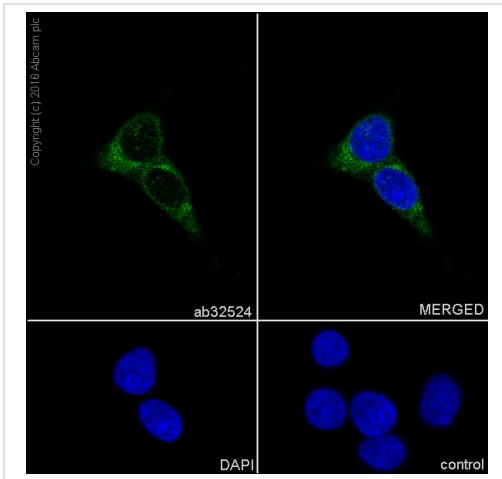
Observed band size: 23 kDa

Exposure time: 3 minutes

Blocking and diluting buffer: 5% NFDm/TBST

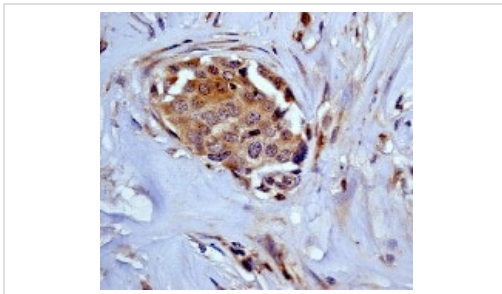
Human ARF-1 recombinant protein, (Cat#: [ab123538](#))

Human ARF-3 recombinant protein, (Cat#: [ab113581](#))



Immunocytochemistry/ Immunofluorescence - Anti-ARF1 + ARF3 antibody [EP442Y] (ab32524)

Immunofluorescence staining of MCF7 cells with purified ab32524 working dilution of 1/500, counter-stained with DAPI. The secondary antibody was an Alexa Fluor[®] 488 conjugated goat anti-rabbit (**ab150077**), used at a dilution of 1/1000. The cells were fixed in 100% methanol. The negative control is shown in bottom right hand panel - for the negative control, PBS was used instead of the primary antibody.







Immunohistochemistry (Formalin/PFA-fixed paraffin-embedded sections) - Anti-ARF1 + ARF3 antibody [EP442Y] (ab32524)

Immunohistochemical analysis of paraffin-embedded human breast carcinoma using ab32524 at 1/250 dilution.

Perform heat mediated antigen retrieval with citrate buffer pH 6 before commencing with IHC staining protocol.

Why choose a recombinant antibody?

 Research with confidence Consistent and reproducible results	 Long-term and scalable supply Recombinant technology
 Success from the first experiment Confirmed specificity	 Ethical standards compliant Animal-free production

Anti-ARF1 + ARF3 antibody [EP442Y] (ab32524)

Please note: All products are "FOR RESEARCH USE ONLY. NOT FOR USE IN DIAGNOSTIC PROCEDURES"

Our Abpromise to you: Quality guaranteed and expert technical support

- Replacement or refund for products not performing as stated on the datasheet
- Valid for 12 months from date of delivery
- Response to your inquiry within 24 hours

- We provide support in Chinese, English, French, German, Japanese and Spanish
- Extensive multi-media technical resources to help you
- We investigate all quality concerns to ensure our products perform to the highest standards

If the product does not perform as described on this datasheet, we will offer a refund or replacement. For full details of the Abpromise, please visit <https://www.abcam.com/abpromise> or contact our technical team.

Terms and conditions

- Guarantee only valid for products bought direct from Abcam or one of our authorized distributors