




Product datasheet

Anti-ARFGAP1 antibody ab204405

[2 References](#) [6 Images](#)

Overview

Product name	Anti-ARFGAP1 antibody
Description	Rabbit polyclonal to ARFGAP1
Host species	Rabbit
Tested applications	Suitable for: ICC, WB, IHC-P
Species reactivity	Reacts with: Human Predicted to work with: Mouse, Rat 
Immunogen	Recombinant fragment corresponding to Human ARFGAP1 aa 100-250. Database link: Q8N6T3  Run BLAST with  Run BLAST with
Positive control	IHC-P: Human pancreas, placenta, and tonsil tissues; ICC: CACO-2 cells; WB: RT4 and U-251 MG cell lysates.
General notes	<p>The Life Science industry has been in the grips of a reproducibility crisis for a number of years. Abcam is leading the way in addressing this with our range of recombinant monoclonal antibodies and knockout edited cell lines for gold-standard validation. Please check that this product meets your needs before purchasing.</p> <p>If you have any questions, special requirements or concerns, please send us an inquiry and/or contact our Support team ahead of purchase. Recommended alternatives for this product can be found below, along with publications, customer reviews and Q&As</p>

Properties

Form	Liquid
Storage instructions	Shipped at 4°C. Store at +4°C short term (1-2 weeks). Upon delivery aliquot. Store at -20°C long term. Avoid freeze / thaw cycle.
Storage buffer	pH: 7.20 Preservative: 0.02% Sodium azide Constituents: 59% PBS, 40% Glycerol (glycerin, glycerine)
Purity	Immunogen affinity purified
Clonality	Polyclonal
Isotype	IgG

Applications

The Abpromise guarantee Our **Abpromise guarantee** covers the use of ab204405 in the following tested applications.

The application notes include recommended starting dilutions; optimal dilutions/concentrations should be determined by the end user.

Application	Abreviews	Notes
ICC		Use a concentration of 0.25 - 2 µg/ml.
WB		Use a concentration of 0.04 - 0.4 µg/ml. Predicted molecular weight: 45 kDa.
IHC-P		1/1000 - 1/2500. Perform heat mediated antigen retrieval with citrate buffer pH 6 before commencing with IHC staining protocol.

Target

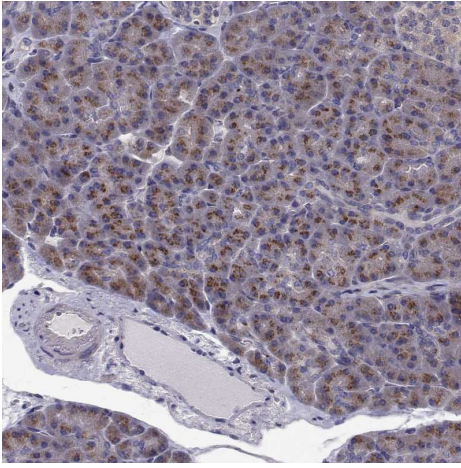
Function GTPase-activating protein (GAP) for the ADP ribosylation factor 1 (ARF1). Involved in membrane trafficking and /or vesicle transport. Promotes hydrolysis of the ARF1-bound GTP and thus, is required for the dissociation of coat proteins from Golgi-derived membranes and vesicles, a prerequisite for vesicle's fusion with target compartment. Probably regulates ARF1-mediated transport via its interaction with the KDEL proteins and RNP24. Overexpression induces the redistribution of the entire Golgi complex to the endoplasmic reticulum, as when ARF1 is deactivated. Its activity is stimulated by phosphoinositides and inhibited by phosphatidylcholine.

Sequence similarities Contains 1 Arf-GAP domain.

Domain The region downstream of Arf-GAP domain is essential to GAP activity in vivo. This region may be required for its targeting to Golgi membranes.

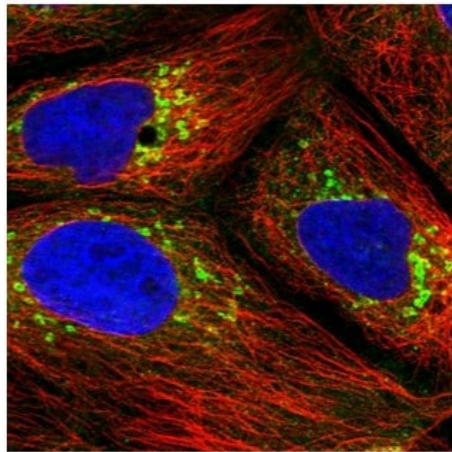
Cellular localization Cytoplasm. Golgi apparatus. Associates with the Golgi complex.

Images



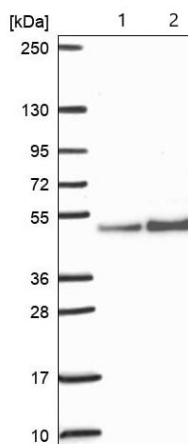
Immunohistochemistry (Formalin/PFA-fixed paraffin-embedded sections) - Anti-ARFGAP1 antibody (ab204405)

Immunohistochemistry (Formalin/PFA-fixed paraffin-embedded sections) analysis of human pancreas tissue labelling ARFGAP1 with ab204405 at 1/1000 dilution. Heat mediated antigen retrieval performed with citrate buffer pH 6 before commencing with IHC staining protocol.



Immunocytochemistry - Anti-ARFGAP1 antibody (ab204405)

Immunofluorescent analysis of CACO-2 cells labeling ARFGAP1 with ab204405 at 4 µg/mL. Fixation/Permeabilization: PFA/Triton X-100.



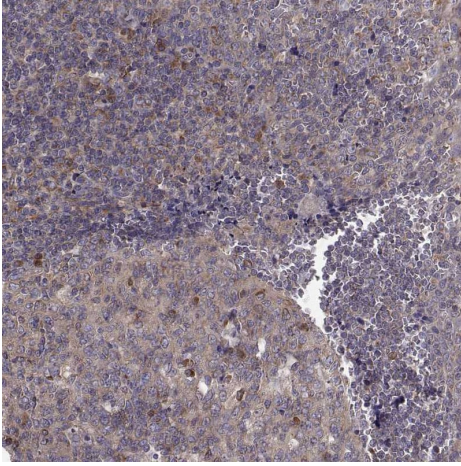
Western blot - Anti-ARFGAP1 antibody (ab204405)

All lanes : Anti-ARFGAP1 antibody (ab204405) at 0.4 µg/ml

Lane 1 : RT4 (human urinary bladder cancer cell line) cell lysate

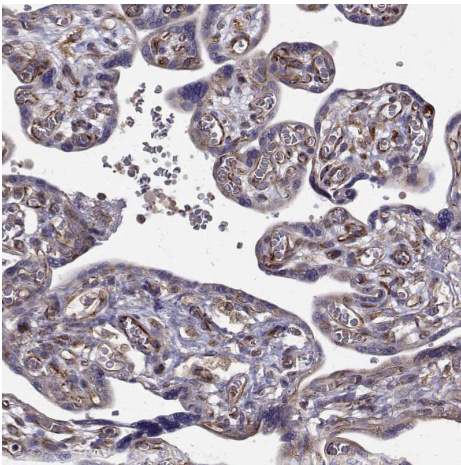
Lane 2 : U-251 MG (formally U-373 MG) (human brain glioma cell line) whole cell lysate

Predicted band size: 45 kDa



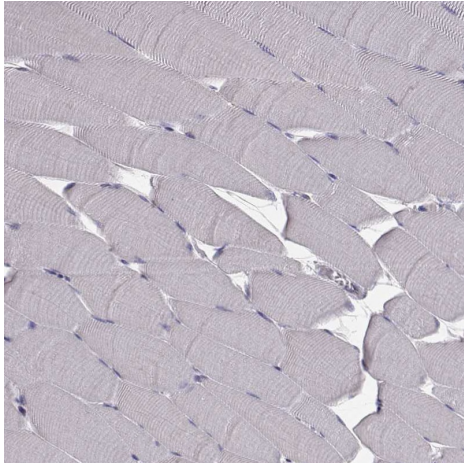
Immunohistochemistry (Formalin/PFA-fixed paraffin-embedded sections) - Anti-ARFGAP1 antibody (ab204405)

Immunohistochemistry (Formalin/PFA-fixed paraffin-embedded sections) analysis of human tonsil tissue labelling ARFGAP1 with ab204405 at 1/1000 dilution. Heat mediated antigen retrieval performed with citrate buffer pH 6 before commencing with IHC staining protocol.



Immunohistochemistry (Formalin/PFA-fixed paraffin-embedded sections) - Anti-ARFGAP1 antibody (ab204405)

Immunohistochemistry (Formalin/PFA-fixed paraffin-embedded sections) analysis of human placenta tissue labelling ARFGAP1 with ab204405 at 1/1000 dilution. Heat mediated antigen retrieval performed with citrate buffer pH 6 before commencing with IHC staining protocol.



Immunohistochemistry (Formalin/PFA-fixed paraffin-embedded sections) - Anti-ARFGAP1 antibody (ab204405)

Immunohistochemistry (Formalin/PFA-fixed paraffin-embedded sections) analysis of human skeletal muscle tissue labelling ARFGAP1 with ab204405 at 1/1000 dilution. Heat mediated antigen retrieval performed with citrate buffer pH 6 before commencing with IHC staining protocol.

Please note: All products are "FOR RESEARCH USE ONLY. NOT FOR USE IN DIAGNOSTIC PROCEDURES"

Our Abpromise to you: Quality guaranteed and expert technical support

- Replacement or refund for products not performing as stated on the datasheet
- Valid for 12 months from date of delivery
- Response to your inquiry within 24 hours
- We provide support in Chinese, English, French, German, Japanese and Spanish
- Extensive multi-media technical resources to help you
- We investigate all quality concerns to ensure our products perform to the highest standards

If the product does not perform as described on this datasheet, we will offer a refund or replacement. For full details of the Abpromise, please visit <https://www.abcam.com/abpromise> or contact our technical team.

Terms and conditions

- Guarantee only valid for products bought direct from Abcam or one of our authorized distributors