


## Product datasheet

### Anti-ARFGEF2/BIG2 antibody ab72420

★★★★★ [2 Abreviews](#) [3 Images](#)

#### Overview

<b>Product name</b>	Anti-ARFGEF2/BIG2 antibody
<b>Description</b>	Rabbit polyclonal to ARFGEF2/BIG2
<b>Host species</b>	Rabbit
<b>Tested applications</b>	<b>Suitable for:</b> WB, IP, IHC-P
<b>Species reactivity</b>	<b>Reacts with:</b> Human <b>Predicted to work with:</b> Chimpanzee, Rhesus monkey, Gorilla, Orangutan 
<b>Immunogen</b>	Synthetic peptide corresponding to Human ARFGEF2/BIG2. GenBank: NP_006411.1 Database link: <a href="#">Q9Y6D5</a>
<b>Positive control</b>	HeLa whole cell lysate.
<b>General notes</b>	<p>The Life Science industry has been in the grips of a reproducibility crisis for a number of years. Abcam is leading the way in addressing this with our range of recombinant monoclonal antibodies and knockout edited cell lines for gold-standard validation. Please check that this product meets your needs before purchasing.</p> <p>If you have any questions, special requirements or concerns, please send us an inquiry and/or contact our Support team ahead of purchase. Recommended alternatives for this product can be found below, along with publications, customer reviews and Q&amp;As</p>

#### Properties

<b>Form</b>	Liquid
<b>Storage instructions</b>	Shipped at 4°C. Upon delivery aliquot and store at -20°C. Avoid freeze / thaw cycles.
<b>Storage buffer</b>	pH: 6.8 Preservative: 0.09% Sodium azide Constituents: 0.1% BSA, Tris buffered saline
<b>Purity</b>	Immunogen affinity purified
<b>Purification notes</b>	ab72420 was affinity purified using an epitope specific to ARFGEF2/BIG2 immobilized on solid support.
<b>Clonality</b>	Polyclonal
<b>Isotype</b>	IgG

## Applications

### The Abpromise guarantee

Our **Abpromise guarantee** covers the use of ab72420 in the following tested applications.

The application notes include recommended starting dilutions; optimal dilutions/concentrations should be determined by the end user.

Application	Abreviews	Notes
WB	★★★★★ (1)	1/2000 - 1/10000. Detects a band of approximately 202 kDa (predicted molecular weight: 202 kDa).
IP		Use at 2-5 µg/mg of lysate.
IHC-P		1/100 - 1/500. Perform heat mediated antigen retrieval with citrate buffer pH 6 before commencing with IHC staining protocol.

## Target

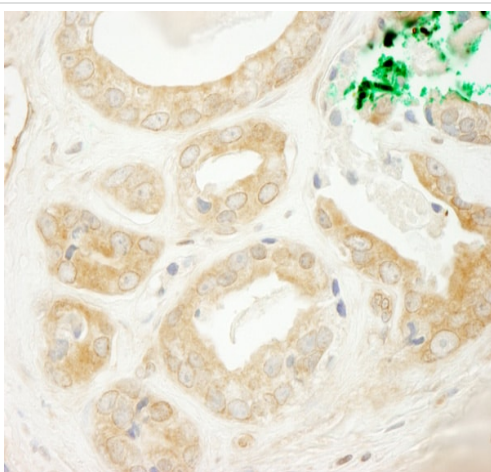
### Relevance

ADP-ribosylation factors (ARFs) play an important role in intracellular vesicular trafficking. ARFGEF2 promotes guanine-nucleotide exchange on ARF1, ARF5 and ARF6 and the activation of ARF1/ARF5/ARF6 through replacement of GDP with GTP. It contains a Sec7 domain, which may be responsible for its guanine-nucleotide exchange activity and also brefeldin A inhibition.

### Cellular localization

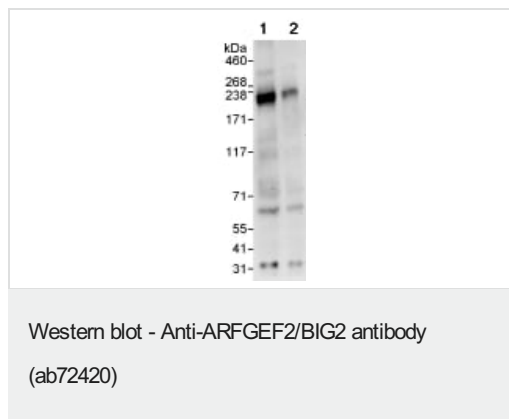
Cytoplasm. Membrane. Golgi apparatus. Cytoplasm › perinuclear region. Golgi apparatus › trans-Golgi network By similarity. Endosome By similarity. Cytoplasm › cytoskeleton › microtubule organizing center › centrosome. Cell projection › dendrite By similarity. Cytoplasmic vesicle By similarity. Cell junction › synapse By similarity. Cytoplasm › cytoskeleton By similarity. Note: Translocates from cytoplasm to membranes upon cAMP treatment. Localized in recycling endosomes.

## Images



Immunohistochemistry (Formalin/PFA-fixed paraffin-embedded sections) analysis of human prostate carcinoma tissue labelling ARFGEF2/BIG with ab72420 at 1/200 (1µg/ml). Detection: DAB.

Immunohistochemistry (Formalin/PFA-fixed paraffin-embedded sections) - Anti-ARFGEF2/BIG2 antibody (ab72420)



**All lanes :** Anti-ARFGEF2/BIG2 antibody (ab72420) at 0.04 µg/ml

**Lane 1 :** HeLa whole cell lysate at 50 µg

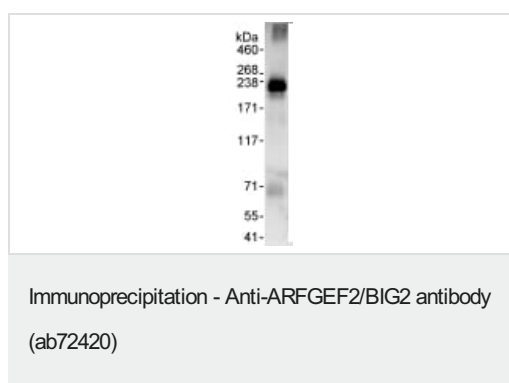
**Lane 2 :** HeLa whole cell lysate at 15 µg

Developed using the ECL technique.

**Predicted band size:** 202 kDa

**Observed band size:** 202 kDa

**Exposure time:** 3 minutes



Detection of ARFGEF2/BIG by Western Blot of Immunoprecipitate.

ab72420 at 1µg/ml staining ARFGEF2/BIG in HeLa whole cell lysate immunoprecipitated using ab72420 at 3µg/mg lysate (1 mg/IP; 20% of IP loaded/lane).

Detection: Chemiluminescence with exposure time of 30 seconds.

**Please note:** All products are "FOR RESEARCH USE ONLY. NOT FOR USE IN DIAGNOSTIC PROCEDURES"

### Our Abpromise to you: Quality guaranteed and expert technical support

- Replacement or refund for products not performing as stated on the datasheet
- Valid for 12 months from date of delivery
- Response to your inquiry within 24 hours
- We provide support in Chinese, English, French, German, Japanese and Spanish
- Extensive multi-media technical resources to help you
- We investigate all quality concerns to ensure our products perform to the highest standards

If the product does not perform as described on this datasheet, we will offer a refund or replacement. For full details of the Abpromise, please visit <https://www.abcam.com/abpromise> or contact our technical team.

### Terms and conditions

- Guarantee only valid for products bought direct from Abcam or one of our authorized distributors