


# Anti-Arg2 antibody ab228700

[2 References](#) [6 Images](#)

## Overview

<b>Product name</b>	Anti-Arg2 antibody
<b>Description</b>	Rabbit polyclonal to Arg2
<b>Host species</b>	Rabbit
<b>Tested applications</b>	<b>Suitable for:</b> ICC/IF, WB, IHC-P
<b>Species reactivity</b>	<b>Reacts with:</b> Mouse, Human <b>Predicted to work with:</b> Cow, Rhesus monkey 
<b>Immunogen</b>	Recombinant fragment within Human Arg2 (internal sequence). The exact sequence is proprietary. Database link: <a href="#">P78540</a>
<b>Positive control</b>	WB: NT2/D1 and PC-3 whole cell lysates; HEK-293T whole cell and cytoplasmic extracts. IHC-P: U373 xenograft tissue; mouse kidney and duodenum tissue. ICC/IF: HepG2 cells.
<b>General notes</b>	<p>The Life Science industry has been in the grips of a reproducibility crisis for a number of years. Abcam is leading the way in addressing this with our range of recombinant monoclonal antibodies and knockout edited cell lines for gold-standard validation. Please check that this product meets your needs before purchasing.</p> <p>If you have any questions, special requirements or concerns, please send us an inquiry and/or contact our Support team ahead of purchase. Recommended alternatives for this product can be found below, along with publications, customer reviews and Q&amp;As</p>

## Properties

<b>Form</b>	Liquid
<b>Storage instructions</b>	Shipped at 4°C. Store at +4°C short term (1-2 weeks). Upon delivery aliquot. Store at -20°C long term. Avoid freeze / thaw cycle.
<b>Storage buffer</b>	pH: 7.00 Preservative: 0.01% Thimerosal (merthiolate) Constituents: 79.99% PBS, 20% Glycerol (glycerin, glycerine)
<b>Purity</b>	Immunogen affinity purified
<b>Clonality</b>	Polyclonal
<b>Isotype</b>	IgG

## Applications

### The Abpromise guarantee

Our **Abpromise guarantee** covers the use of ab228700 in the following tested applications.

The application notes include recommended starting dilutions; optimal dilutions/concentrations should be determined by the end user.

Application	Abreviews	Notes
ICC/IF		1/100 - 1/1000.
WB		1/500 - 1/3000. Predicted molecular weight: 39 kDa.
IHC-P		1/100 - 1/1000.

## Target

### Function

May play a role in the regulation of extra-urea cycle arginine metabolism and also in down-regulation of nitric oxide synthesis. Extrahepatic arginase functions to regulate L-arginine bioavailability to NO synthase. Since NO synthase is found in the penile corpus cavernosum smooth muscle, the clitoral corpus cavernosum and the vagina, arginase II plays a role in both male and female sexual arousal. It is therefore a potential target for the treatment of male and female sexual arousal disorders.

### Tissue specificity

Expressed most strongly in kidney and prostate, much less strongly in the brain, skeletal muscle, placenta, lung, mammary gland, macrophage, uterus, testis and gut, but apparently not in the liver, heart and pancreas.

### Pathway

Nitrogen metabolism; urea cycle; L-ornithine and urea from L-arginine: step 1/1.

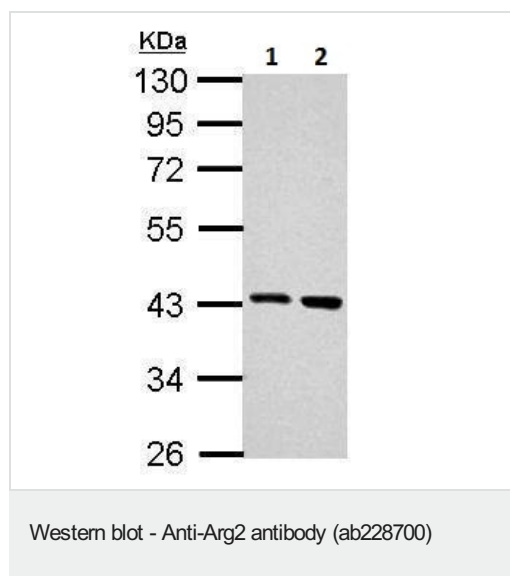
### Sequence similarities

Belongs to the arginase family.

### Cellular localization

Mitochondrion.

## Images



**All lanes :** Anti-Arg2 antibody (ab228700) at 1/1000 dilution

**Lane 1 :** NT2/D2 (human carcinoma cell line from metastatic lung) whole cell lysate

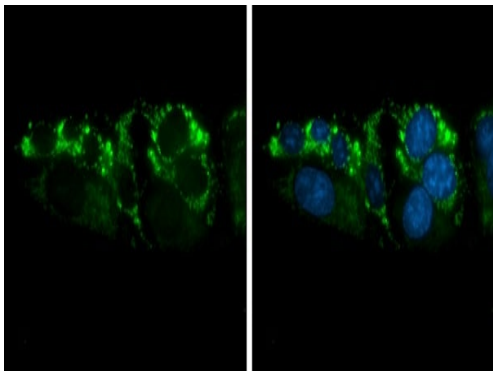
**Lane 2 :** PC-3 (human prostate adenocarcinoma cell line) whole cell lysate

Lysates/proteins at 30 µg per lane.

Developed using the ECL technique.

**Predicted band size:** 39 kDa

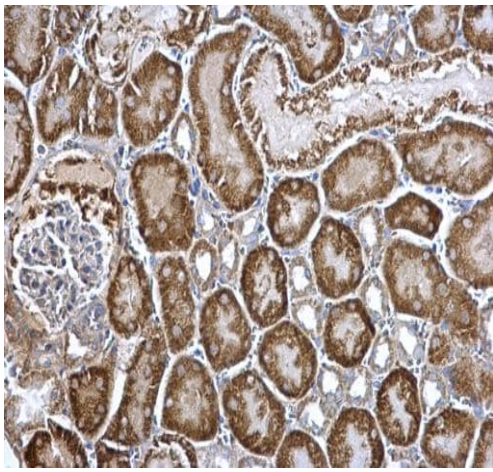
## 10% SDS-PAGE



Immunocytochemistry/ Immunofluorescence - Anti-Arg2 antibody (ab228700)

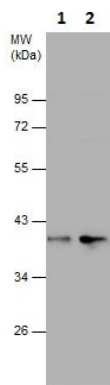
Ice-cold methanol-fixed HepG2 (human liver hepatocellular carcinoma cell line) cells stained for Arg2 (green) using ab228700 at 1/500 dilution in ICC/IF.

Nuclear counterstain: Hoechst 33342 (blue).



Immunohistochemistry (Formalin/PFA-fixed paraffin-embedded sections) - Anti-Arg2 antibody (ab228700)

Paraffin-embedded mouse kidney tissue stained for Arg2 with ab228700 at 1/500 dilution in immunohistochemical analysis.



Western blot - Anti-Arg2 antibody (ab228700)

**All lanes :** Anti-Arg2 antibody (ab228700) at 1/1000 dilution

**Lane 1 :** HEK-293T (human epithelial cell line from embryonic kidney transformed with large T antigen) whole cell extract

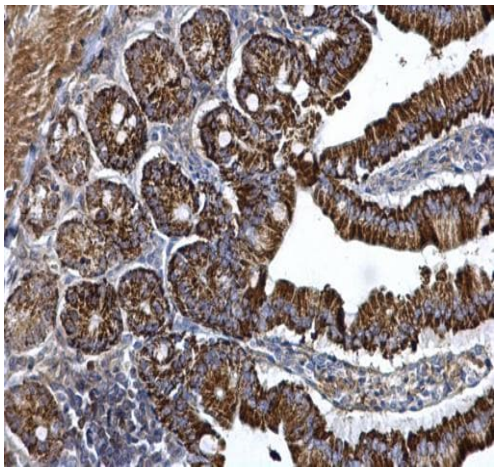
**Lane 2 :** HEK-293T cytoplasmic extract

Lysates/proteins at 30 µg per lane.

Developed using the ECL technique.

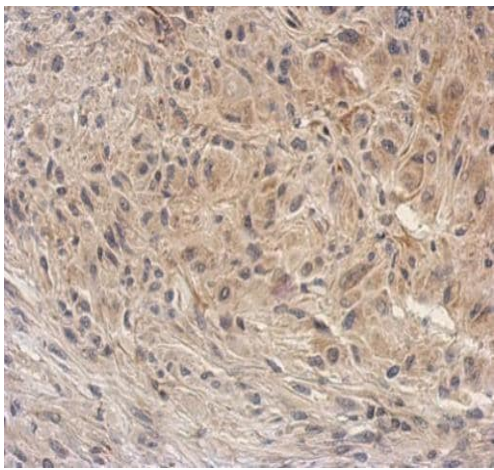
**Predicted band size:** 39 kDa

## 10% SDS-PAGE



Immunohistochemistry (Formalin/PFA-fixed paraffin-embedded sections) - Anti-Arg2 antibody (ab228700)

Paraffin-embedded mouse duodenum tissue stained for Arg2 with ab228700 at 1/500 dilution in immunohistochemical analysis.



Immunohistochemistry (Formalin/PFA-fixed paraffin-embedded sections) - Anti-Arg2 antibody (ab228700)

Paraffin-embedded U737 xenograft tissue stained for Arg2 with ab228700 at 1/500 dilution in immunohistochemical analysis.

**Please note:** All products are "FOR RESEARCH USE ONLY. NOT FOR USE IN DIAGNOSTIC PROCEDURES"

### Our Abpromise to you: Quality guaranteed and expert technical support

- Replacement or refund for products not performing as stated on the datasheet
- Valid for 12 months from date of delivery
- Response to your inquiry within 24 hours
- We provide support in Chinese, English, French, German, Japanese and Spanish
- Extensive multi-media technical resources to help you
- We investigate all quality concerns to ensure our products perform to the highest standards

If the product does not perform as described on this datasheet, we will offer a refund or replacement. For full details of the Abpromise, please visit <https://www.abcam.com/abpromise> or contact our technical team.

## Terms and conditions

---

- Guarantee only valid for products bought direct from Abcam or one of our authorized distributors