

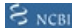


Product datasheet

Anti-ARHGEF10 antibody ab168936

2 Images

Overview

| | |
|----------------------------|---|
| Product name | Anti-ARHGEF10 antibody |
| Description | Mouse polyclonal to ARHGEF10 |
| Host species | Mouse |
| Tested applications | Suitable for: WB, ICC/IF |
| Species reactivity | Reacts with: Human |
| Immunogen | Recombinant fragment corresponding to amino acids 207-570 of Human ARHGEF10 Isoform 3 (AAH40474.1)  Run BLAST with  Run BLAST with  |
| Positive control | ARHGEF10-transfected 293T cell lysate. HeLa cells. |
| General notes | <p>The Life Science industry has been in the grips of a reproducibility crisis for a number of years. Abcam is leading the way in addressing this with our range of recombinant monoclonal antibodies and knockout edited cell lines for gold-standard validation. Please check that this product meets your needs before purchasing.</p> <p>If you have any questions, special requirements or concerns, please send us an inquiry and/or contact our Support team ahead of purchase. Recommended alternatives for this product can be found below, along with publications, customer reviews and Q&As</p> |

Properties

| | |
|-----------------------------|--|
| Form | Liquid |
| Storage instructions | Shipped at 4°C. Store at +4°C short term (1-2 weeks). Upon delivery aliquot. Store at -20°C long term. |
| Storage buffer | pH: 7.4 Constituent: 99% PBS |
| Purity | Protein A purified |
| Clonality | Polyclonal |
| Isotype | IgG |

Applications

The Abpromise guarantee

Our **Abpromise guarantee** covers the use of ab168936 in the following tested applications.

The application notes include recommended starting dilutions; optimal dilutions/concentrations should be determined by the end user.

| Application | Abreviews | Notes |
|-------------|-----------|--|
| WB | | Use a concentration of 1 µg/ml. Predicted molecular weight: 152 kDa. |
| ICC/IF | | Use a concentration of 10 µg/ml. |

Target

Function

May play a role in developmental myelination of peripheral nerves.

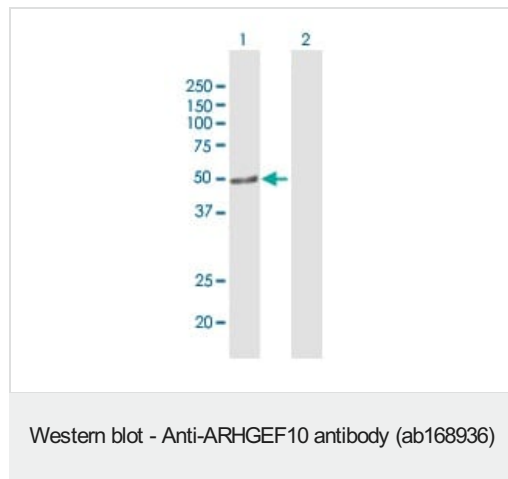
Involvement in disease

Defects in ARHGEF10 are the cause of slowed nerve conduction velocity (SNCV) [MIM:608236]. Affected individuals present a reduction in nerve conduction velocities without any clinical signs of peripheral or central nervous system dysfunction. SNCV inheritance is autosomal dominant.

Sequence similarities

Contains 1 DH (DBL-homology) domain.

Images



All lanes : Anti-ARHGEF10 antibody (ab168936) at 1 µg/ml

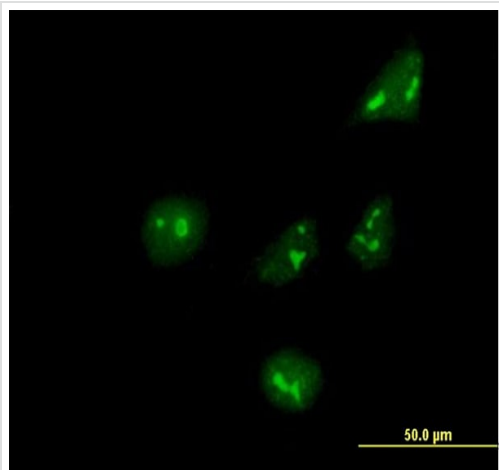
Lane 1 : ARHGEF10-transfected 293T cell lysate (41.8 KDa)

Lane 2 : non-transfected 293T cell lysate

Lysates/proteins at 15 µl per lane.

Developed using the ECL technique.

Predicted band size: 152 kDa



Immunofluorescent analysis of HeLa cells, labeling ARHGEF10 with ab168936 at 10 $\mu\text{g/ml}$.

Immunocytochemistry/ Immunofluorescence - Anti-ARHGEF10 antibody (ab168936)

Please note: All products are "FOR RESEARCH USE ONLY. NOT FOR USE IN DIAGNOSTIC PROCEDURES"

Our Abpromise to you: Quality guaranteed and expert technical support

- Replacement or refund for products not performing as stated on the datasheet
- Valid for 12 months from date of delivery
- Response to your inquiry within 24 hours
- We provide support in Chinese, English, French, German, Japanese and Spanish
- Extensive multi-media technical resources to help you
- We investigate all quality concerns to ensure our products perform to the highest standards

If the product does not perform as described on this datasheet, we will offer a refund or replacement. For full details of the Abpromise, please visit <https://www.abcam.com/abpromise> or contact our technical team.

Terms and conditions

- Guarantee only valid for products bought direct from Abcam or one of our authorized distributors