


Product datasheet

Anti-ARL 1 antibody [EPR10595] ab155982

Recombinant RabMAb

10 Images

Overview

Product name	Anti-ARL 1 antibody [EPR10595]
Description	Rabbit monoclonal [EPR10595] to ARL 1
Host species	Rabbit
Tested applications	Suitable for: WB, IHC-P, ICC/IF Unsuitable for: Flow Cyt
Species reactivity	Reacts with: Human Predicted to work with: Mouse, Rat 
Immunogen	Synthetic peptide. This information is proprietary to Abcam and/or its suppliers.
Positive control	HepG2, MCF7, HeLa and K562 cell lysate; Human liver and pancreas tissues. This antibody gave a positive result when used in the following formaldehyde fixed cell lines: CaCo2
General notes	<p>This product is a recombinant monoclonal antibody, which offers several advantages including:</p> <ul style="list-style-type: none"> - High batch-to-batch consistency and reproducibility - Improved sensitivity and specificity - Long-term security of supply - Animal-free production <p>For more information see here.</p> <p>Our RabMAb[®] technology is a patented hybridoma-based technology for making rabbit monoclonal antibodies. For details on our patents, please refer to RabMAb[®] patents.</p>

Properties

Form	Liquid
Storage instructions	Shipped at 4°C. Store at -20°C.
Storage buffer	pH: 7.2 Preservative: 0.01% Sodium azide Constituents: 9% PBS, 40% Glycerol (glycerin, glycerine), 0.05% BSA, 50% Tissue culture supernatant
Purity	Tissue culture supernatant
Clonality	Monoclonal

Clone number EPR10595

Isotype IgG

Applications

The Abpromise guarantee Our **Abpromise guarantee** covers the use of ab155982 in the following tested applications. The application notes include recommended starting dilutions; optimal dilutions/concentrations should be determined by the end user.

Application	Abreviews	Notes
WB		1/1000 - 1/10000. Predicted molecular weight: 20 kDa.
IHC-P		1/50 - 1/100. Perform heat mediated antigen retrieval before commencing with IHC staining protocol.
ICC/IF		1/100 - 1/250.

Application notes Is unsuitable for Flow Cyt.

Target

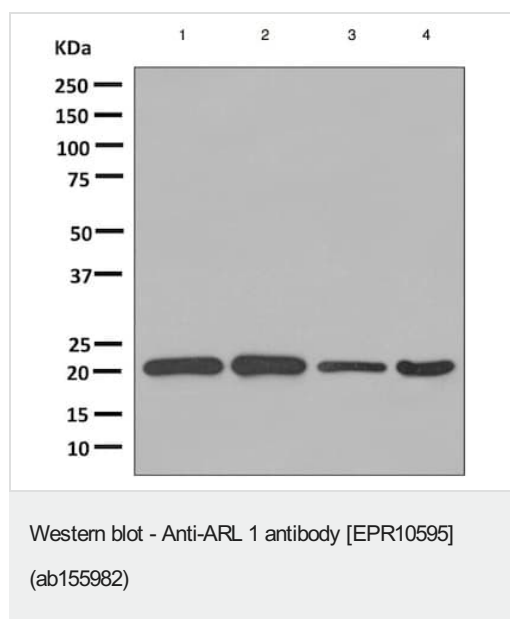
Function GTP-binding protein that has very low efficiency as allosteric activator of the cholera toxin catalytic subunit, an ADP-ribosyltransferase. Can activate phospholipase D with very low efficiency. Important for normal function of the Golgi apparatus.

Tissue specificity Detected in heart, liver, lung and liver (at protein level). Detected in fetal heart, lung, liver and kidney. Detected in adult heart, placenta, lung, liver, skeletal muscle, kidney and pancreas.

Sequence similarities Belongs to the small GTPase superfamily. Arf family.

Cellular localization Golgi apparatus membrane.

Images



All lanes : Anti-ARL 1 antibody [EPR10595] (ab155982) at 1/1000 dilution

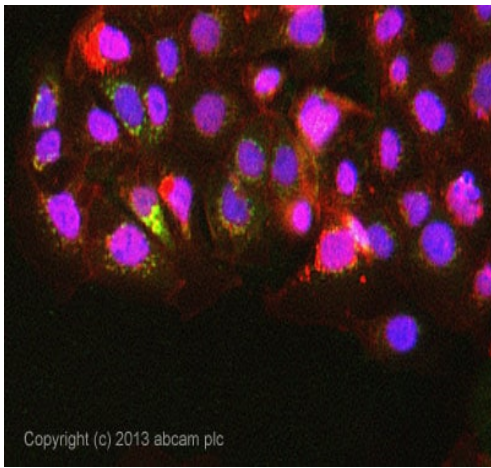
Lane 1 : HepG2 cell lysate
Lane 2 : MCF7 cell lysate
Lane 3 : HeLa cell lysate
Lane 4 : K562 cell lysate

Lysates/proteins at 10 µg per lane.

Secondary

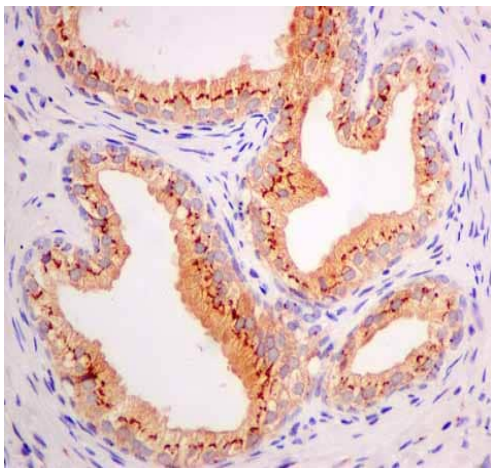
All lanes : HRP labeled goat anti-rabbit IgG at 1/2000 dilution

Predicted band size: 20 kDa



Immunocytochemistry/ Immunofluorescence - Anti-ARL 1 antibody [EPR10595] (ab155982)

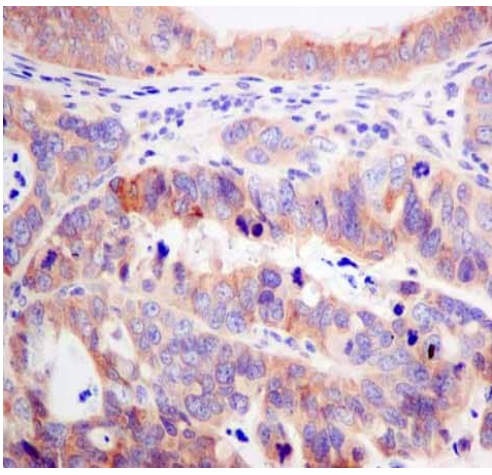
ICC/IF image of ab155982 stained CaCo2 cells. The cells were 4% formaldehyde fixed (10 min) and then incubated in 1%BSA / 10% normal goat serum / 0.3M glycine in 0.1% PBS-Tween for 1h to permeabilise the cells and block non-specific protein-protein interactions. The cells were then incubated with the antibody ab155982 at 10µg/ml overnight at +4°C. The secondary antibody (green) was DyLight® 488 goat anti- rabbit (**ab96899**) IgG (H+L) used at a 1/250 dilution for 1h. Alexa Fluor® 594 WGA was used to label plasma membranes (red) at a 1/200 dilution for 1h. DAPI was used to stain the cell nuclei (blue) at a concentration of 1.43µM.



Immunohistochemistry (Formalin/PFA-fixed paraffin-embedded sections) - Anti-ARL 1 antibody [EPR10595] (ab155982)

ab155982 showing +ve staining in Human normal prostate.

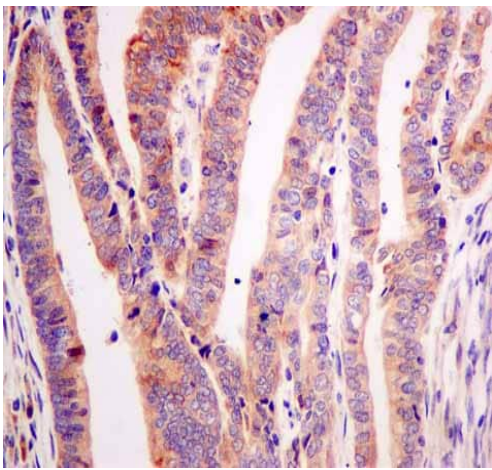
Perform heat mediated antigen retrieval before commencing with IHC staining protocol.



Immunohistochemistry (Formalin/PFA-fixed paraffin-embedded sections) - Anti-ARL 1 antibody
[EPR10595] (ab155982)

ab155982 showing +ve staining in Human gastric adenocarcinoma.

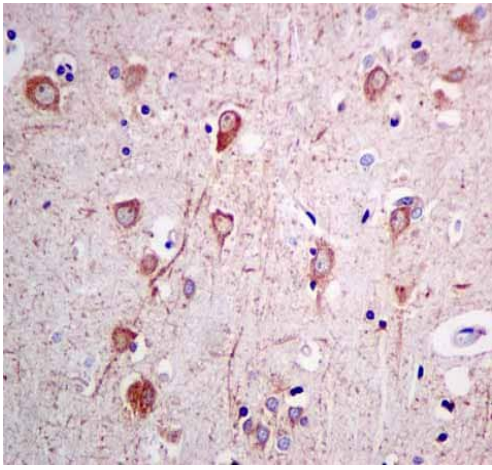
Perform heat mediated antigen retrieval before commencing with IHC staining protocol.



Immunohistochemistry (Formalin/PFA-fixed paraffin-embedded sections) - Anti-ARL 1 antibody
[EPR10595] (ab155982)

ab155982 showing +ve staining in Human endometrial carcinoma.

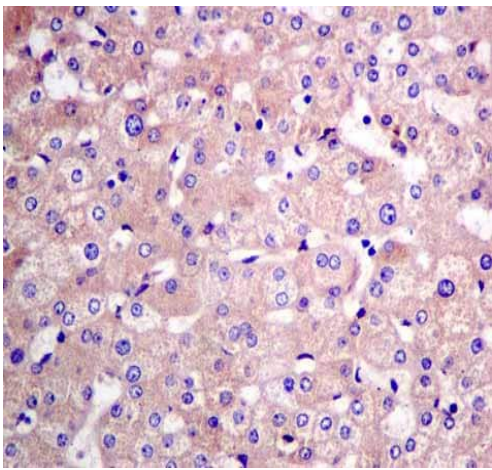
Perform heat mediated antigen retrieval before commencing with IHC staining protocol.



Immunohistochemistry (Formalin/PFA-fixed paraffin-embedded sections) - Anti-ARL 1 antibody
[EPR10595] (ab155982)

ab155982 showing +ve staining in Human normal brain.

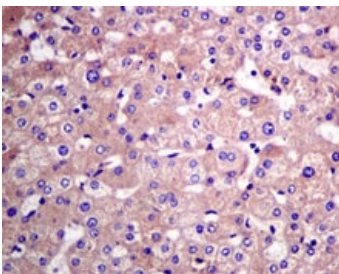
Perform heat mediated antigen retrieval before commencing with IHC staining protocol.



Immunohistochemistry (Formalin/PFA-fixed paraffin-embedded sections) - Anti-ARL 1 antibody
[EPR10595] (ab155982)

ab155982 showing +ve staining in Human normal liver.

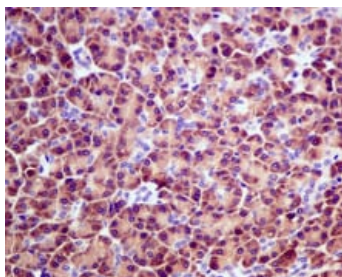
Perform heat mediated antigen retrieval before commencing with IHC staining protocol.



Immunohistochemistry (Formalin/PFA-fixed paraffin-embedded sections) - Anti-ARL 1 antibody
[EPR10595] (ab155982)

Immunohistochemical analysis of paraffin-embedded Human liver tissue labeling ARL 1 with ab155982 at 1/50 dilution.

Perform heat mediated antigen retrieval before commencing with IHC staining protocol.



Immunohistochemical analysis of formalin-fixed, paraffin-embedded Human pancreas tissue labeling ARL 1 with ab155982 at 1/50 dilution

Perform heat mediated antigen retrieval before commencing with IHC staining protocol.

Immunohistochemistry (Formalin/PFA-fixed paraffin-embedded sections) - Anti-ARL 1 antibody [EPR10595] (ab155982)

Why choose a recombinant antibody?



Research with confidence
Consistent and reproducible results



Long-term and scalable supply
Recombinant technology



Success from the first experiment
Confirmed specificity



Ethical standards compliant
Animal-free production

Anti-ARL 1 antibody [EPR10595] (ab155982)

Please note: All products are "FOR RESEARCH USE ONLY. NOT FOR USE IN DIAGNOSTIC PROCEDURES"

Our Abpromise to you: Quality guaranteed and expert technical support

- Replacement or refund for products not performing as stated on the datasheet
- Valid for 12 months from date of delivery
- Response to your inquiry within 24 hours
- We provide support in Chinese, English, French, German, Japanese and Spanish
- Extensive multi-media technical resources to help you
- We investigate all quality concerns to ensure our products perform to the highest standards

If the product does not perform as described on this datasheet, we will offer a refund or replacement. For full details of the Abpromise, please visit <https://www.abcam.com/abpromise> or contact our technical team.

Terms and conditions

- Guarantee only valid for products bought direct from Abcam or one of our authorized distributors