


## Product datasheet

# Anti-ARP1 antibody ab11009

★★★★☆ [6 Abreviews](#) [2 References](#) [3 Images](#)

### Overview

---

<b>Product name</b>	Anti-ARP1 antibody
<b>Description</b>	Rabbit polyclonal to ARP1
<b>Host species</b>	Rabbit
<b>Tested applications</b>	<b>Suitable for:</b> IHC-P, WB
<b>Species reactivity</b>	<b>Reacts with:</b> Rat, Human <b>Predicted to work with:</b> Dog 
<b>Immunogen</b>	Synthetic peptide corresponding to Human ARP1 aa 222-240 conjugated to keyhole limpet haemocyanin. Sequence: ACYLSINPQKDETELEKAQ <a href="#">Run BLAST with</a> <a href="#">Run BLAST with</a>
<b>General notes</b>	<p>If slight turbidity occurs upon prolonged storage, clarify the solution by centrifugation before use. Working dilutions should be discarded if not used within 12 hours.</p> <p>The Life Science industry has been in the grips of a reproducibility crisis for a number of years. Abcam is leading the way in addressing this with our range of recombinant monoclonal antibodies and knockout edited cell lines for gold-standard validation. Please check that this product meets your needs before purchasing.</p> <p>If you have any questions, special requirements or concerns, please send us an inquiry and/or contact our Support team ahead of purchase. Recommended alternatives for this product can be found below, along with publications, customer reviews and Q&amp;As</p>

### Properties

---

<b>Form</b>	Liquid
<b>Storage instructions</b>	Shipped at 4°C. Store at +4°C short term (1-2 weeks). Upon delivery aliquot. Store at -20°C or -80°C. Avoid freeze / thaw cycle.
<b>Storage buffer</b>	pH: 7.40 Preservative: 0.097% Sodium azide Constituent: 0.0268% PBS
<b>Purity</b>	IgG fraction
<b>Purification notes</b>	Whole antiserum is fractionated and then further purified by ion-exchange chromatography to

provide the IgG fraction of antiserum that is essentially free of other rabbit serum proteins.

**Clonality**

Polyclonal

**Isotype**

IgG

**Applications**

---

**The Abpromise guarantee**

Our **Abpromise guarantee** covers the use of ab11009 in the following tested applications.

The application notes include recommended starting dilutions; optimal dilutions/concentrations should be determined by the end user.

Application	Abreviews	Notes
IHC-P		
WB	★★★★☆ (4)	

**Application notes**

IF: 1/100.

For indirect immunofluorescence, a minimum working antibody dilution of 1:100 is recommended using mouse fibroblasts NIH3T cell.

WB: 1/1000 (recommended using a rat brain cytosol extract and a whole cell extract of the human epidermoid carcinoma A431 cell line). Predicted molecular weight: 45 kDa.

Not tested in other applications.

Optimal dilutions/concentrations should be determined by the end user.

**Target**

---

**Function**

Component of a multi-subunit complex involved in microtubule based vesicle motility. It is associated with the centrosome.

**Sequence similarities**

Belongs to the actin family. ARP1 subfamily.

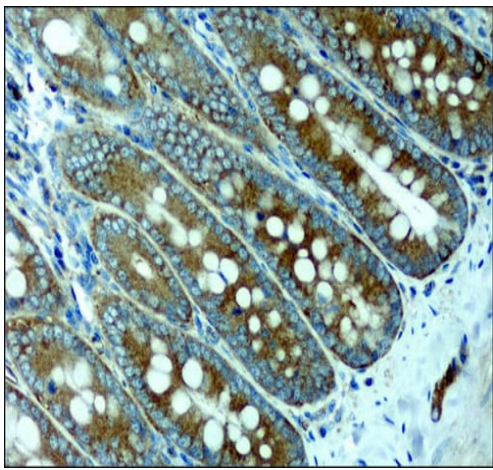
**Cellular localization**

Cytoplasm > cytoskeleton. Cytoplasm > cytoskeleton > centrosome.

---

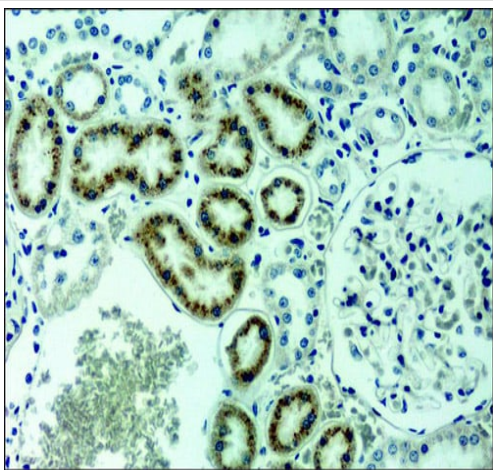
**Images**

---



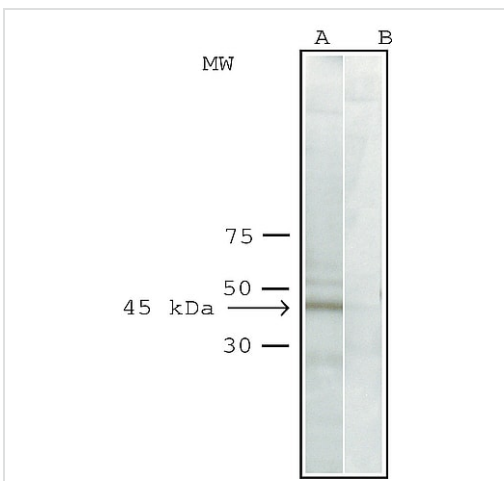
Immunohistochemistry (Formalin/PFA-fixed paraffin-embedded sections) - Anti-ARP1 antibody (ab11009)

Immunohistochemistry (Formalin fixed, paraffin-embedded sections) analysis of rat duodenum tissue labelling ARP1 with ab11009.



Immunohistochemistry (Formalin/PFA-fixed paraffin-embedded sections) - Anti-ARP1 antibody (ab11009)

Immunohistochemistry (Formalin fixed, paraffin-embedded sections) analysis of rat kidney tissue labelling ARP1 with ab11009.



Western blot - Anti-ARP1 antibody (ab11009)

**All lanes :** Anti-ARP1 antibody (ab11009) at 1/1000 dilution

**Lane 1 :** A432 cell lysate

**Lane 2 :** A432 cell lysate with ARP1 immunising peptide at 5 mg/ml

**Predicted band size:** 45 kDa

**Observed band size:** 45 kDa

## **Our Abpromise to you: Quality guaranteed and expert technical support**

---

- Replacement or refund for products not performing as stated on the datasheet
- Valid for 12 months from date of delivery
- Response to your inquiry within 24 hours
  
- We provide support in Chinese, English, French, German, Japanese and Spanish
- Extensive multi-media technical resources to help you
- We investigate all quality concerns to ensure our products perform to the highest standards

If the product does not perform as described on this datasheet, we will offer a refund or replacement. For full details of the Abpromise, please visit <https://www.abcam.com/abpromise> or contact our technical team.

## **Terms and conditions**

---

- Guarantee only valid for products bought direct from Abcam or one of our authorized distributors