


Product datasheet

Anti-Arp2 antibody ab226476

3 Images

Overview

| | |
|----------------------------|---|
| Product name | Anti-Arp2 antibody |
| Description | Rabbit polyclonal to Arp2 |
| Host species | Rabbit |
| Tested applications | Suitable for: WB, IP, IHC-P |
| Species reactivity | Reacts with: Mouse, Human Predicted to work with: Rat, Chicken, Cow, Xenopus laevis, Zebrafish, Orangutan, Xenopus tropicalis  |
| Immunogen | Synthetic peptide within Human Arp2 aa 25-75. The exact sequence is proprietary. Database link: P61160 |
| Positive control | WB: HeLa, HEK-293T, Jurkat and NIH/3T3 cell lysate. IHC: Human skin squamous carcinoma tissue. IP: HEK-293T cell lysate. |
| General notes | <p>The Life Science industry has been in the grips of a reproducibility crisis for a number of years. Abcam is leading the way in addressing this with our range of recombinant monoclonal antibodies and knockout edited cell lines for gold-standard validation. Please check that this product meets your needs before purchasing.</p> <p>If you have any questions, special requirements or concerns, please send us an inquiry and/or contact our Support team ahead of purchase. Recommended alternatives for this product can be found below, along with publications, customer reviews and Q&As</p> |

Properties

| | |
|-----------------------------|---|
| Form | Liquid |
| Storage instructions | Shipped at 4°C. Store at +4°C short term (1-2 weeks). Upon delivery aliquot. Store at -20°C long term. Avoid freeze / thaw cycle. |
| Storage buffer | pH: 7 Preservative: 0.09% Sodium azide Constituent: Tris citrate/phosphate |
| Purity | pH 7 to 8 Immunogen affinity purified |
| Clonality | Polyclonal |

Isotype

IgG

Applications

The Abpromise guarantee

Our **Abpromise guarantee** covers the use of ab226476 in the following tested applications.

The application notes include recommended starting dilutions; optimal dilutions/concentrations should be determined by the end user.

| Application | Abreviews | Notes |
|-------------|-----------|--|
| WB | | 1/2000 - 1/10000. Predicted molecular weight: 45 kDa. |
| IP | | Use at 2-10 µg/mg of lysate. |
| IHC-P | | 1/1000 - 1/5000. Epitope retrieval with citrate buffer pH6.0 is recommended for FFPE tissue sections. |

Target

Function

Functions as ATP-binding component of the Arp2/3 complex which is involved in regulation of actin polymerization and together with an activating nucleation-promoting factor (NPF) mediates the formation of branched actin networks. Seems to contact the pointed end of the daughter actin filament.

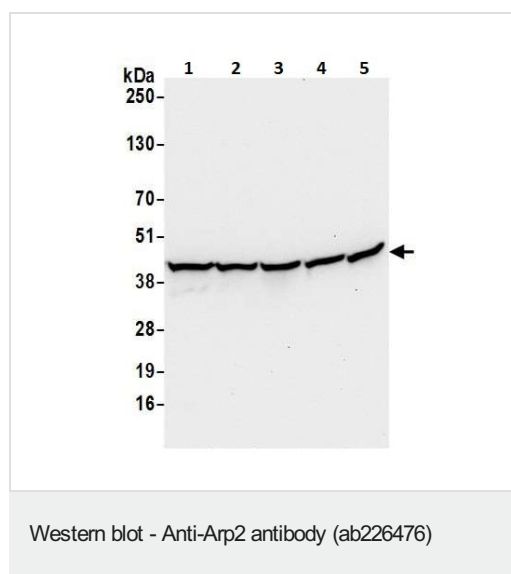
Sequence similarities

Belongs to the actin family. ARP2 subfamily.

Cellular localization

Cytoplasm > cytoskeleton. Cell projection.

Images



All lanes : Anti-Arp2 antibody (ab226476) at 0.1 µg/ml

Lane 1 : HeLa (human epithelial cell line from cervix adenocarcinoma) cell lysate

Lane 2 : HEK-293T (human epithelial cell line from embryonic kidney transformed with large T antigen) cell lysate

Lane 3 : Jurkat (human T cell leukemia cell line from peripheral blood) cell lysate

Lane 4 : TCMK-1 (mouse kidney epithelial cell line) cell lysate

Lane 5 : NIH/3T3 (mouse embryo fibroblast cell line) cell lysate

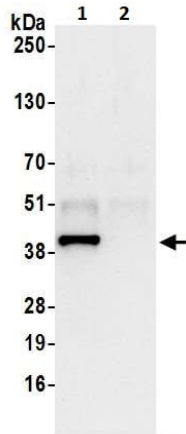
Lysates/proteins at 50 µg per lane.

Developed using the ECL technique.

Performed under reducing conditions.

Predicted band size: 45 kDa

Exposure time: 10 seconds



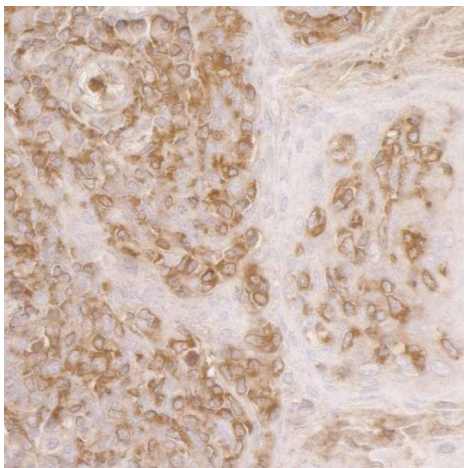
Immunoprecipitation - Anti-Arp2 antibody (ab226476)

Arp2 was immunoprecipitated from HEK-293T (human epithelial cell line from embryonic kidney transformed with large T antigen) whole cell lysate (prepared using NETN buffer; 1.0 mg for IP, 20% of IP loaded) with ab226476 at 6 µg/mg lysate. Western blot was performed from the immunoprecipitate using ab226476 at 1 µg/ml.

Lane 1: ab226476 IP in HEK-293T whole cell lysate.

Lane 2: Control IgG IP in HEK-293T whole cell lysate.

Detection: Chemiluminescence with exposure time of 10 seconds.



Immunohistochemistry (Formalin/PFA-fixed paraffin-embedded sections) - Anti-Arp2 antibody (ab226476)

Human skin squamous carcinoma tissue stained for Arp2 using ab226476 at 1/5000 dilution in immunohistochemical analysis.

Please note: All products are "FOR RESEARCH USE ONLY. NOT FOR USE IN DIAGNOSTIC PROCEDURES"

Our Abpromise to you: Quality guaranteed and expert technical support

- Replacement or refund for products not performing as stated on the datasheet
- Valid for 12 months from date of delivery
- Response to your inquiry within 24 hours
- We provide support in Chinese, English, French, German, Japanese and Spanish
- Extensive multi-media technical resources to help you

- We investigate all quality concerns to ensure our products perform to the highest standards

If the product does not perform as described on this datasheet, we will offer a refund or replacement. For full details of the Abpromise, please visit <https://www.abcam.com/abpromise> or contact our technical team.

Terms and conditions

- Guarantee only valid for products bought direct from Abcam or one of our authorized distributors