


Product datasheet

Anti-ARPC1B antibody ab99314

★★★★★ [2 Abreviews](#) [3 References](#) [2 Images](#)

Overview

Product name	Anti-ARPC1B antibody
Description	Rabbit polyclonal to ARPC1B
Host species	Rabbit
Tested applications	Suitable for: WB, IP
Species reactivity	Reacts with: Mouse, Human Predicted to work with: Rabbit, Chicken, Guinea pig, Cow, Dog, Turkey, Pig, Chimpanzee, Rhesus monkey, Gorilla, Chinese hamster, Orangutan 
Immunogen	Synthetic peptide corresponding to Human ARPC1B aa 272-332. Database link: NP_005711.1
Positive control	HeLa, 293T and NIH3T3 cell lysates
General notes	<p>The Life Science industry has been in the grips of a reproducibility crisis for a number of years. Abcam is leading the way in addressing this with our range of recombinant monoclonal antibodies and knockout edited cell lines for gold-standard validation. Please check that this product meets your needs before purchasing.</p> <p>If you have any questions, special requirements or concerns, please send us an inquiry and/or contact our Support team ahead of purchase. Recommended alternatives for this product can be found below, along with publications, customer reviews and Q&As</p>

Properties

Form	Liquid
Storage instructions	Shipped at 4°C. Upon delivery aliquot and store at -20°C. Avoid freeze / thaw cycles.
Storage buffer	pH: 6.8 Preservative: 0.09% Sodium azide Constituents: 0.1% BSA, Tris buffered saline
Purity	Immunogen affinity purified
Purification notes	ab99314 was affinity purified using an epitope specific to ARPC1B immobilized on solid support.
Clonality	Polyclonal
Isotype	IgG

Applications

The Abpromise guarantee

Our **Abpromise guarantee** covers the use of ab99314 in the following tested applications.

The application notes include recommended starting dilutions; optimal dilutions/concentrations should be determined by the end user.

Application	Abreviews	Notes
WB	★ ★ ★ ★ ★ (1)	1/2000 - 1/10000. Predicted molecular weight: 41 kDa.
IP		Use at 2-5 µg/mg of lysate.

Target

Function

Functions as component of the Arp2/3 complex which is involved in regulation of actin polymerization and together with an activating nucleation-promoting factor (NPF) mediates the formation of branched actin networks.

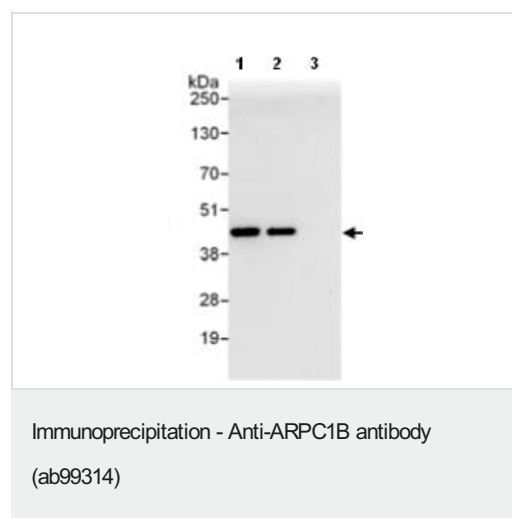
Sequence similarities

Belongs to the WD repeat ARPC1 family.
Contains 6 WD repeats.

Cellular localization

Cytoplasm > cytoskeleton.

Images



ab99314 at 1 µg/ml detecting ARPC1B in HeLa whole cell lysate by WB following IP.

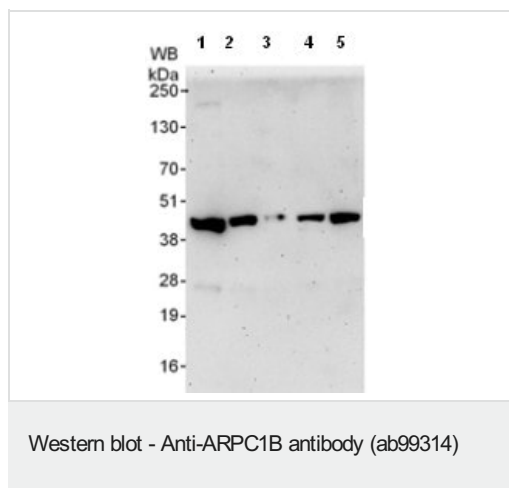
Lane 1: ab99314 at 3µg/mg of lysate.

Lane 2: IP with an antibody which recognizes an downstream epitope of ARPC1B.

Lane 3: control IgG.

In each case, 1 mg of lysate was used for IP and 20% of the IP was loaded.

Detection: Chemiluminescence with an exposure time of 3 seconds.



All lanes : Anti-ARPC1B antibody (ab99314) at 0.04 µg/ml

Lane 1 : HeLa whole cell lysate at 50 µg

Lane 2 : HeLa whole cell lysate at 15 µg

Lane 3 : HeLa whole cell lysate at 5 µg

Lane 4 : 293T cell lysate at 50 µg

Lane 5 : NIH3T3 cell lysate at 50 µg

Developed using the ECL technique.

Predicted band size: 41 kDa

Exposure time: 3 minutes

Please note: All products are "FOR RESEARCH USE ONLY. NOT FOR USE IN DIAGNOSTIC PROCEDURES"

Our Abpromise to you: Quality guaranteed and expert technical support

- Replacement or refund for products not performing as stated on the datasheet
- Valid for 12 months from date of delivery
- Response to your inquiry within 24 hours
- We provide support in Chinese, English, French, German, Japanese and Spanish
- Extensive multi-media technical resources to help you
- We investigate all quality concerns to ensure our products perform to the highest standards

If the product does not perform as described on this datasheet, we will offer a refund or replacement. For full details of the Abpromise, please visit <https://www.abcam.com/abpromise> or contact our technical team.

Terms and conditions

- Guarantee only valid for products bought direct from Abcam or one of our authorized distributors