




Product datasheet

Anti-ARS2 antibody - N-terminal ab192999

[4 References](#) [2 Images](#)

Overview

Product name	Anti-ARS2 antibody - N-terminal
Description	Rabbit polyclonal to ARS2 - N-terminal
Host species	Rabbit
Tested applications	Suitable for: IP, WB
Species reactivity	<p>Reacts with: Mouse, Human</p> <p>Predicted to work with: Rat, Sheep, Horse, Cow, Dog, Pig, Xenopus laevis, Chimpanzee, Rhesus monkey, Gorilla, Orangutan, Xenopus tropicalis </p>
Immunogen	<p>Synthetic peptide within Human ARS2 aa 1-100 (N terminal). The exact immunogen sequence used to generate this antibody is proprietary information. If additional detail on the immunogen is needed to determine the suitability of the antibody for your needs, please contact our Scientific Support team to discuss your requirements. (NP_056992.4).</p> <p>Database link: Q9BXP5</p> <p style="text-align: right;">  Run BLAST with  Run BLAST with </p>
Positive control	HeLa, 293T, Jurkat, TCMK-1 and NIH 3T3 whole cell lysates.
General notes	<p>The Life Science industry has been in the grips of a reproducibility crisis for a number of years. Abcam is leading the way in addressing this with our range of recombinant monoclonal antibodies and knockout edited cell lines for gold-standard validation. Please check that this product meets your needs before purchasing.</p> <p>If you have any questions, special requirements or concerns, please send us an inquiry and/or contact our Support team ahead of purchase. Recommended alternatives for this product can be found below, along with publications, customer reviews and Q&As</p>

Properties

Form	Liquid
Storage instructions	Shipped at 4°C. Store at +4°C short term (1-2 weeks). Upon delivery aliquot. Store at -20°C long term. Avoid freeze / thaw cycle.
Storage buffer	<p>pH: 7</p> <p>Preservative: 0.09% Sodium azide</p> <p>Constituent: 99% Tris citrate/phosphate</p> <p>pH 7 to 8</p>

Purity	Immunogen affinity purified
Purification notes	ab192999 was affinity purified using an epitope specific to ARS2 immobilized on solid support.
Clonality	Polyclonal
Isotype	IgG

Applications

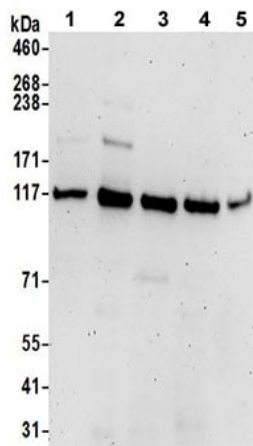
The Abpromise guarantee Our **Abpromise guarantee** covers the use of ab192999 in the following tested applications. The application notes include recommended starting dilutions; optimal dilutions/concentrations should be determined by the end user.

Application	Abreviews	Notes
IP		Use at 2-10 µg/mg of lysate.
WB		1/2000 - 1/10000. Predicted molecular weight: 101 kDa.

Target

Function	Acts as a mediator between the cap-binding complex (CBC) and the primary microRNAs (miRNAs) processing machinery during cell proliferation. Contributes to the stability and delivery of capped primary miRNA transcripts to the primary miRNA processing complex containing DGCR8 and DROSHA, thereby playing a role in RNA-mediated gene silencing (RNAi) by miRNAs. Binds capped RNAs (m7GpppG-capped RNA); however interaction is probably mediated via its interaction with NCBP1/CBP80 component of the CBC complex. Involved in cell cycle progression at S phase. Does not directly confer arsenite resistance but rather modulates arsenic sensitivity.
Tissue specificity	Ubiquitously expressed.
Sequence similarities	Belongs to the ARS2 family.
Cellular localization	Nucleus > nucleoplasm. Cytoplasm. Predominantly nuclear. Shuttles between the nucleus and the cytoplasm in a CRM1-dependent way.

Images



Western blot - Anti-ARS2 antibody - N-terminal (ab192999)

All lanes : Anti-ARS2 antibody - N-terminal (ab192999) at 0.1 $\mu\text{g/ml}$

Lane 1 : HeLa whole cell lysate

Lane 2 : 293T whole cell lysate

Lane 3 : Jurkat whole cell lysate

Lane 4 : TCMK-1 whole cell lysate

Lane 5 : NIH 3T3 whole cell lysate

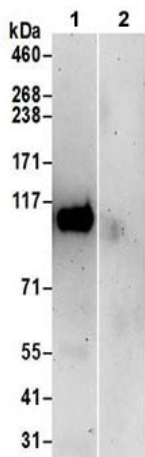
Lysates/proteins at 50 μg per lane.

Developed using the ECL technique.

Predicted band size: 101 kDa

Exposure time: 3 minutes

Lysates prepared using NETN lysis buffer.



Immunoprecipitation - Anti-ARS2 antibody - N-terminal (ab192999)

Detection of ARS2 in immunoprecipitates of Jurkat whole cell lysate (prepared using NETN lysis buffer; 1 mg for IP, 20% of IP loaded) using ab192999 at 6 $\mu\text{g/mg}$ lysate for IP and at 1 $\mu\text{g/ml}$ for subsequent Western blot detection (Lane 1). Lane 2 represents control IgG IP.

Detection: Chemiluminescence with an exposure time of 3 minutes.

Please note: All products are "FOR RESEARCH USE ONLY. NOT FOR USE IN DIAGNOSTIC PROCEDURES"

Our Abpromise to you: Quality guaranteed and expert technical support

- Replacement or refund for products not performing as stated on the datasheet
- Valid for 12 months from date of delivery
- Response to your inquiry within 24 hours

- We provide support in Chinese, English, French, German, Japanese and Spanish
- Extensive multi-media technical resources to help you
- We investigate all quality concerns to ensure our products perform to the highest standards

If the product does not perform as described on this datasheet, we will offer a refund or replacement. For full details of the Abpromise, please visit <https://www.abcam.com/abpromise> or contact our technical team.

Terms and conditions

- Guarantee only valid for products bought direct from Abcam or one of our authorized distributors