



Product datasheet

Anti-AS160 (phospho T642) antibody ab65753

★★★★★ [1 Abreviews](#) [7 References](#) [1 Image](#)

Overview

Product name	Anti-AS160 (phospho T642) antibody
Description	Sheep polyclonal to AS160 (phospho T642)
Host species	Sheep
Tested applications	Suitable for: WB
Species reactivity	Reacts with: Human
Immunogen	Synthetic peptide corresponding to Human AS160 aa 600-700 conjugated to keyhole limpet haemocyanin. Database link: O60343
	 Run BLAST with  Run BLAST with
Positive control	WB: HEK-293 cells
General notes	<p>The Life Science industry has been in the grips of a reproducibility crisis for a number of years. Abcam is leading the way in addressing this with our range of recombinant monoclonal antibodies and knockout edited cell lines for gold-standard validation. Please check that this product meets your needs before purchasing.</p> <p>If you have any questions, special requirements or concerns, please send us an inquiry and/or contact our Support team ahead of purchase. Recommended alternatives for this product can be found below, along with publications, customer reviews and Q&As</p>

Properties

Form	Liquid
Storage instructions	Shipped at 4°C. Store at +4°C short term (1-2 weeks). Store at -20°C or -80°C. Avoid freeze / thaw cycle.
Storage buffer	pH: 7.50 Preservative: 0.05% Sodium azide Constituents: 0.238% HEPES, 0.87% Sodium chloride
Purity	Immunogen affinity purified
Clonality	Polyclonal
Isotype	IgG

Applications

The Abpromise guarantee

Our **Abpromise guarantee** covers the use of ab65753 in the following tested applications.

The application notes include recommended starting dilutions; optimal dilutions/concentrations should be determined by the end user.

Application	Abreviews	Notes
WB	★★★★★ (1)	Use a concentration of 2 µg/ml. Predicted molecular weight: 147 kDa.

Target

Function

May act as a GTPase-activating protein for RAB2A, RAB8A, RAB10 and RAB14. Isoform 2 promotes insulin-induced glucose transporter SLC2A4/GLUT4 translocation at the plasma membrane, thus increasing glucose uptake.

Tissue specificity

Widely expressed. Isoform 2 is the highest overexpressed in most tissues. Isoform 1 is highly expressed in skeletal muscle and heart, but was not detectable in the liver nor in adipose tissue. Isoform 2 is strongly expressed in adrenal and thyroid gland, and also in lung, kidney, colon, brain and adipose tissue. Isoform 2 is moderately expressed in skeletal muscle. Expressed in pancreatic Langerhans islets, including beta cells (at protein level). Expression is decreased by twofold in pancreatic islets in type 2 diabetes patients compared to control subjects. Up-regulated in T cells from patients with atopic dermatitis.

Sequence similarities

Contains 2 PID domains.
Contains 1 Rab-GAP TBC domain.

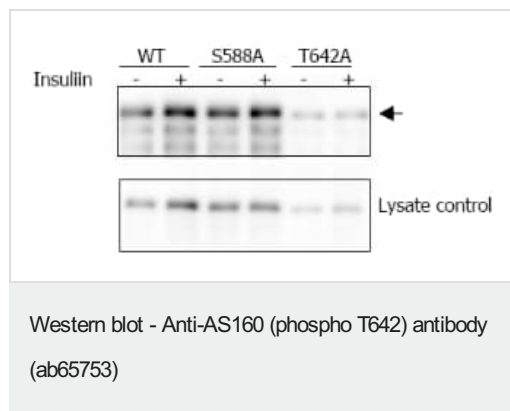
Post-translational modifications

Phosphorylated by AKT1; insulin-induced.
Insulin-stimulated phosphorylation is required for SLC2A4/GLUT4 translocation. Physiological hyperinsulinemia increases phosphorylation in skeletal muscle. Insulin-stimulated phosphorylation is reduced by 39% in type 2 diabetic patients.

Cellular localization

Cytoplasm. Isoform 2 shows a cytoplasmic perinuclear localization in a myoblastic cell line in resting and insulin-stimulated cells.

Images



All lanes : Anti-AS160 (phospho T642) antibody (ab65753) at 2 µg/ml

Lane 1 : AS160 wild type (WT)

Lane 2 : AS160 wild type (WT) with (+) 1 µM insulin treatment for 15 minutes

Lane 3 : S588A mutant (S588A)

Lane 4 : S588A mutant (S588A) with (+) 1 µM insulin treatment for 15 minutes

Lane 5 : T642A mutant (T642A)

Lane 6 : T642A mutant (T642A) with (+) 1 µM insulin treatment for 15 minutes

Predicted band size: 147 kDa

Western blot analysis of immunoprecipitated Flagtagged AS160 wild type (WT), S588A mutant (S588A), and T642A mutant (T642A) over-expressed transiently in HEK-293 cells, basal (-) or with (+) 1 μ M insulin treatment for 15 minutes.

Please note: All products are "FOR RESEARCH USE ONLY. NOT FOR USE IN DIAGNOSTIC PROCEDURES"

Our Abpromise to you: Quality guaranteed and expert technical support

- Replacement or refund for products not performing as stated on the datasheet
- Valid for 12 months from date of delivery
- Response to your inquiry within 24 hours
- We provide support in Chinese, English, French, German, Japanese and Spanish
- Extensive multi-media technical resources to help you
- We investigate all quality concerns to ensure our products perform to the highest standards

If the product does not perform as described on this datasheet, we will offer a refund or replacement. For full details of the Abpromise, please visit <https://www.abcam.com/abpromise> or contact our technical team.

Terms and conditions

- Guarantee only valid for products bought direct from Abcam or one of our authorized distributors