


Product datasheet

Anti-ASRGL1 antibody ab150832

[8 Images](#)

Overview

Product name	Anti-ASRGL1 antibody
Description	Rabbit polyclonal to ASRGL1
Host species	Rabbit
Tested applications	Suitable for: IHC-P, ICC/IF, WB
Species reactivity	Reacts with: Human Predicted to work with: Horse, Cow, Cat, Dog, Pig 
Immunogen	Recombinant fragment corresponding to amino acids 82-163 of Human ASRGL1 Run BLAST with ExPASy Run BLAST with NCBI
Positive control	IHC: Human corpus, uterine tissue. IF: U-2 OS cells.
General notes	Store product undiluted. The antibody solution should be gently mixed before use. The Life Science industry has been in the grips of a reproducibility crisis for a number of years. Abcam is leading the way in addressing this with our range of recombinant monoclonal antibodies and knockout edited cell lines for gold-standard validation. Please check that this product meets your needs before purchasing. If you have any questions, special requirements or concerns, please send us an inquiry and/or contact our Support team ahead of purchase. Recommended alternatives for this product can be found below, along with publications, customer reviews and Q&As

Properties

Form	Liquid
Storage instructions	Shipped at 4°C. Upon delivery aliquot and store at -20°C. Avoid freeze / thaw cycles.
Storage buffer	pH: 7.20 Preservative: 0.02% Sodium azide Constituents: 59% PBS, 40% Glycerol (glycerin, glycerine)
Purity	Immunogen affinity purified
Clonality	Polyclonal
Isotype	IgG

Applications

The Abpromise guarantee

Our **Abpromise guarantee** covers the use of ab150832 in the following tested applications.

The application notes include recommended starting dilutions; optimal dilutions/concentrations should be determined by the end user.

Application	Abreviews	Notes
IHC-P		1/200 - 1/400. Perform heat mediated antigen retrieval with citrate buffer pH 6 before commencing with IHC staining protocol.
ICC/IF		Use a concentration of 0.25 - 2 µg/ml.
WB		Use a concentration of 0.04 - 0.4 µg/ml.

Target**Function**

Has both L-asparaginase and beta-aspartyl peptidase activity. May be involved in the production of L-aspartate, which can act as an excitatory neurotransmitter in some brain regions. Is highly active with L-Asp beta-methyl ester. Besides, has catalytic activity toward beta-aspartyl dipeptides and their methyl esters, including beta-L-Asp-L-Phe, beta-L-Asp-L-Phe methyl ester (aspartame), beta-L-Asp-L-Ala, beta-L-Asp-L-Leu and beta-L-Asp-L-Lys. Does not have aspartylglucosaminidase activity and is inactive toward GlcNAc-L-Asn. Likewise, has no activity toward glutamine.

Tissue specificity

Expressed in brain, kidney, testis and tissues of the gastrointestinal tract. Present in sperm (at protein level). Over-expressed in uterine, mammary, prostatic and ovarian carcinoma.

Sequence similarities

Belongs to the Ntn-hydrolase family.

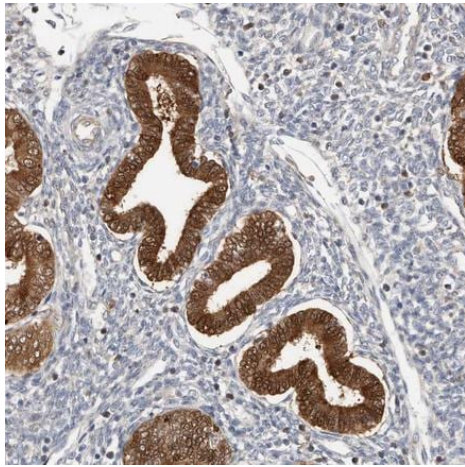
Post-translational modifications

Cleaved into an alpha and beta chain by autocatalysis; this activates the enzyme. The N-terminal residue of the beta subunit is responsible for the nucleophile hydrolase activity.

Cellular localization

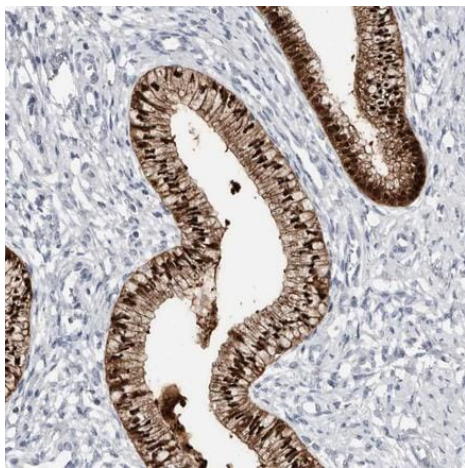
Cytoplasm. Midpiece of sperm tail.

Images



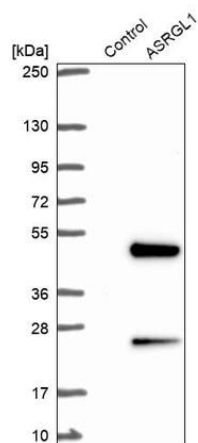
Immunohistochemistry-Paraffin Embedded Human endometrium tissue labelling ASRGL1 with ab150832 at 1:200.

Immunohistochemistry (Formalin/PFA-fixed paraffin-embedded sections) - Anti-ASRGL1 antibody (ab150832)



Immunohistochemistry-Paraffin Embedded Human cervix tissue labelling ASRGL1 with ab150832 at 1:200.

Immunohistochemistry (Formalin/PFA-fixed paraffin-embedded sections) - Anti-ASRGL1 antibody (ab150832)

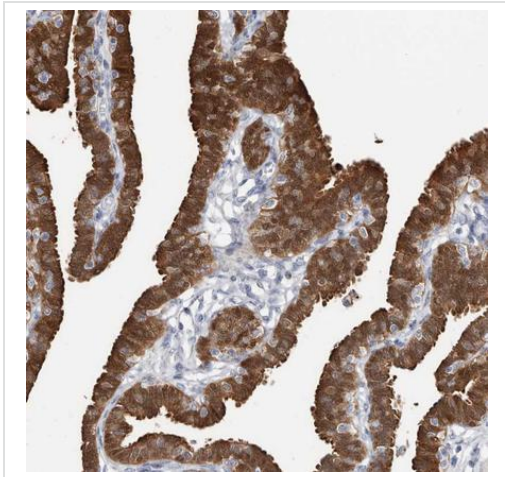


All lanes : Anti-ASRGL1 antibody (ab150832) at 0.4 $\mu\text{g/ml}$

Lane 1 : Control vector transfected HEK239 lysate

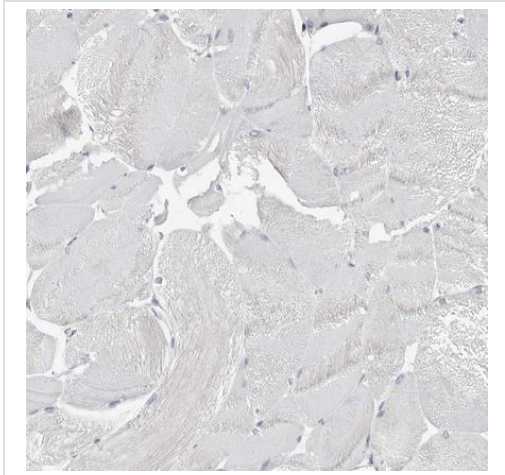
Lane 2 : ASRGL1 transfected HEK239 lysate

Western blot - Anti-ASRGL1 antibody (ab150832)



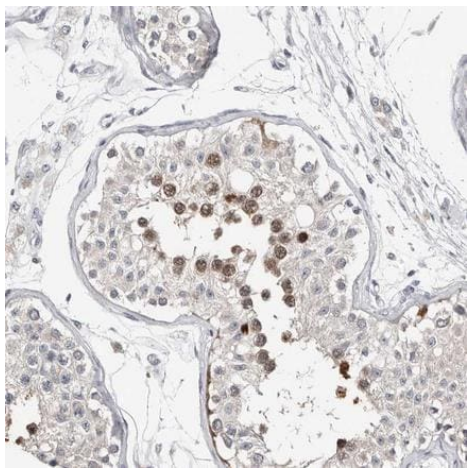
Immunohistochemistry-Paraffin Embedded Human fallopian tube tissue labelling ASRGL1 with ab150832 at 1:200.

Immunohistochemistry (Formalin/PFA-fixed paraffin-embedded sections) - Anti-ASRGL1 antibody (ab150832)

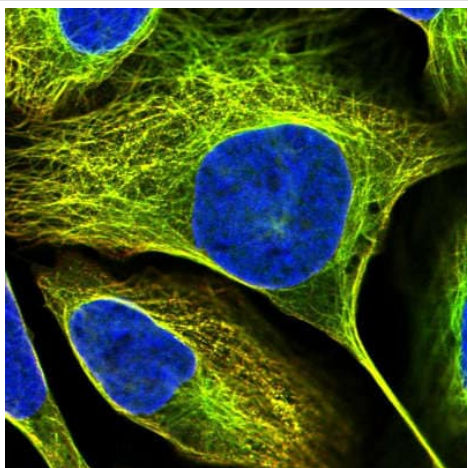


Negative Control: Immunohistochemistry-Paraffin Embedded Human skeletal muscle tissue labelling ASRGL1 with ab150832 at 1:200.

Immunohistochemistry (Formalin/PFA-fixed paraffin-embedded sections) - Anti-ASRGL1 antibody (ab150832)

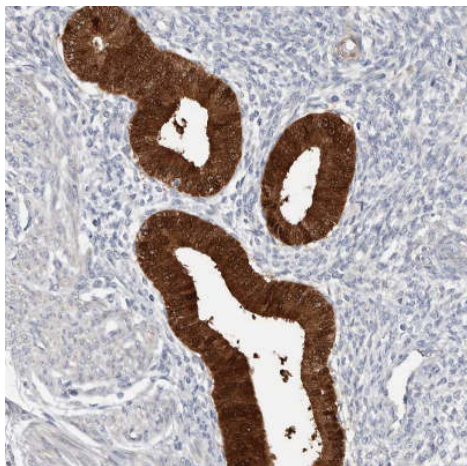


Immunohistochemistry (Formalin/PFA-fixed paraffin-embedded sections) - Anti-ASRGL1 antibody (ab150832)



Immunofluorescence analysis of U-2 OS cells labeling ASRGL1 with ab150832 at 4 $\mu\text{g/ml}$.

Immunocytochemistry/ Immunofluorescence - Anti-ASRGL1 antibody (ab150832)



Immunohistochemistry-Paraffin Embedded Human corpus, uterine tissue labelling ASRGL1 with ab150832 at 1:200.

Immunohistochemistry (Formalin/PFA-fixed paraffin-embedded sections) - Anti-ASRGL1 antibody (ab150832)

Please note: All products are "FOR RESEARCH USE ONLY. NOT FOR USE IN DIAGNOSTIC PROCEDURES"

Our Abpromise to you: Quality guaranteed and expert technical support

- Replacement or refund for products not performing as stated on the datasheet
- Valid for 12 months from date of delivery
- Response to your inquiry within 24 hours
- We provide support in Chinese, English, French, German, Japanese and Spanish
- Extensive multi-media technical resources to help you
- We investigate all quality concerns to ensure our products perform to the highest standards

If the product does not perform as described on this datasheet, we will offer a refund or replacement. For full details of the Abpromise, please visit <https://www.abcam.com/abpromise> or contact our technical team.

Terms and conditions

- Guarantee only valid for products bought direct from Abcam or one of our authorized distributors