

Product datasheet

Anti-Ataxin 1 (phospho S776) antibody ab63376

★★★★★ [1 Abreviews](#) [2 References](#) [1 Image](#)

Overview

Product name	Anti-Ataxin 1 (phospho S776) antibody
Description	Rabbit polyclonal to Ataxin 1 (phospho S776)
Host species	Rabbit
Tested applications	Suitable for: WB
Species reactivity	Reacts with: Human
Immunogen	Synthetic peptide corresponding to Human Ataxin 1 aa 700-800 (phospho S776). Database link: P54253
General notes	<p>The Life Science industry has been in the grips of a reproducibility crisis for a number of years. Abcam is leading the way in addressing this with our range of recombinant monoclonal antibodies and knockout edited cell lines for gold-standard validation. Please check that this product meets your needs before purchasing.</p> <p>If you have any questions, special requirements or concerns, please send us an inquiry and/or contact our Support team ahead of purchase. Recommended alternatives for this product can be found below, along with publications, customer reviews and Q&As</p>

Properties

Form	Liquid
Storage instructions	Shipped at 4°C. Store at -20°C. Stable for 12 months at -20°C.
Storage buffer	pH: 7.40 Preservative: 0.02% Sodium azide Constituents: PBS, 50% Glycerol, 0.87% Sodium chloride
	Without Mg ²⁺ and Ca ²⁺
Purity	Immunogen affinity purified
Purification notes	Purified from rabbit antiserum by affinity chromatography using epitope specific phosphopeptide. The antibody against non-phosphopeptide was removed by chromatography using non-phosphopeptide corresponding to the phosphorylation site.
Clonality	Polyclonal
Isotype	IgG

Applications

The Abpromise guarantee

Our **Abpromise guarantee** covers the use of ab63376 in the following tested applications.

The application notes include recommended starting dilutions; optimal dilutions/concentrations should be determined by the end user.

Application	Abreviews	Notes
WB		1/500 - 1/1000. Detects a band of approximately 87 kDa (predicted molecular weight: 87 kDa).

Target

Function

Binds RNA in vitro. May be involved in RNA metabolism. The expansion of the polyglutamine tract may alter this function.

Tissue specificity

Widely expressed throughout the body.

Involvement in disease

Defects in ATXN1 are the cause of spinocerebellar ataxia type 1 (SCA1) [MIM:164400]; also known as olivopontocerebellar atrophy I (OPCA I or OPCA1). Spinocerebellar ataxia is a clinically and genetically heterogeneous group of cerebellar disorders. Patients show progressive incoordination of gait and often poor coordination of hands, speech and eye movements, due to cerebellum degeneration with variable involvement of the brainstem and spinal cord. SCA1 belongs to the autosomal dominant cerebellar ataxias type I (ADCA I) which are characterized by cerebellar ataxia in combination with additional clinical features like optic atrophy, ophthalmoplegia, bulbar and extrapyramidal signs, peripheral neuropathy and dementia. SCA1 is caused by expansion of a CAG repeat in the coding region of ATXN1. Longer expansions result in earlier onset and more severe clinical manifestations of the disease.

Sequence similarities

Belongs to the ATXN1 family.
Contains 1 AXH domain.

Domain

The AXH domain is required for interaction with CIC.

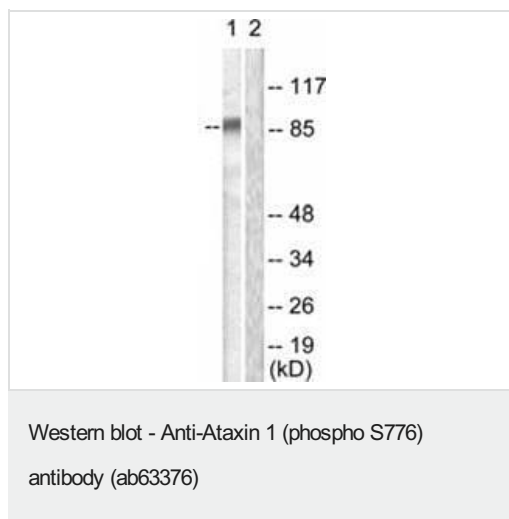
Post-translational modifications

Phosphorylation at Ser-775 increases the pathogenicity of proteins with an expanded polyglutamine tract.
Sumoylation is dependent on nuclear localization and phosphorylation at Ser-775. It is reduced in the presence of an expanded polyglutamine tract.

Cellular localization

Cytoplasm. Nucleus. Colocalizes with USP7 in the nucleus.

Images



All lanes : Anti-Ataxin 1 (phospho S776) antibody (ab63376) at 1/500 dilution

Lane 1 : HepG2 cell extract treated with Adriamycin (0.5 micromoles, 5hours)

Lane 2 : HepG2 cell extract treated with Adriamycin (0.5 micromoles, 5hours) with immunizing phosphopeptide at 10 µg

Lysates/proteins at 30 µg per lane.

Predicted band size: 87 kDa

Observed band size: 87 kDa

Please note: All products are "FOR RESEARCH USE ONLY. NOT FOR USE IN DIAGNOSTIC PROCEDURES"

Our Abpromise to you: Quality guaranteed and expert technical support

- Replacement or refund for products not performing as stated on the datasheet
- Valid for 12 months from date of delivery
- Response to your inquiry within 24 hours
- We provide support in Chinese, English, French, German, Japanese and Spanish
- Extensive multi-media technical resources to help you
- We investigate all quality concerns to ensure our products perform to the highest standards

If the product does not perform as described on this datasheet, we will offer a refund or replacement. For full details of the Abpromise, please visit <https://www.abcam.com/abpromise> or contact our technical team.

Terms and conditions

- Guarantee only valid for products bought direct from Abcam or one of our authorized distributors