

Product datasheet

Anti-ATF-4 antibody ab31390

★★★★★ [4 Abreviews](#) [11 References](#) [1 Image](#)

Overview

Product name	Anti-ATF-4 antibody
Description	Rabbit polyclonal to ATF-4
Host species	Rabbit
Specificity	Antibody detects endogenous levels of ATF-4 protein around Serine 245.
Tested applications	Suitable for: ELISA, IHC-Fr, ICC/IF, IHC-P
Species reactivity	Reacts with: Mouse, Human
Immunogen	Synthetic peptide corresponding to Human ATF-4. Database link: P18848
General notes	<p>The Life Science industry has been in the grips of a reproducibility crisis for a number of years. Abcam is leading the way in addressing this with our range of recombinant monoclonal antibodies and knockout edited cell lines for gold-standard validation. Please check that this product meets your needs before purchasing.</p> <p>If you have any questions, special requirements or concerns, please send us an inquiry and/or contact our Support team ahead of purchase. Recommended alternatives for this product can be found below, along with publications, customer reviews and Q&As</p>

Properties

Form	Liquid
Storage instructions	Shipped at 4°C. Upon delivery aliquot and store at -20°C. Avoid freeze / thaw cycles.
Storage buffer	pH: 7.40 Preservative: 0.02% Sodium azide Constituents: PBS, 50% Glycerol, 0.87% Sodium chloride
Purity	Without Mg ²⁺ and Ca ²⁺ Immunogen affinity purified
Clonality	Polyclonal
Isotype	IgG

Applications

The Abpromise guarantee

Our **Abpromise guarantee** covers the use of ab31390 in the following tested applications.

The application notes include recommended starting dilutions; optimal dilutions/concentrations should be determined by the end user.

Application	Abreviews	Notes
ELISA		Use at an assay dependent concentration.
IHC-Fr	★★★★★ (1)	Use at an assay dependent concentration.
ICC/IF	★★★★★ (1)	Use at an assay dependent concentration. PubMed: 21933012 Fixed with methanol.
IHC-P	★★★★★ (2)	Use at an assay dependent concentration.

Target

Function

Transcriptional activator. Binds the cAMP response element (CRE) (consensus: 5'-GTGACGT[AC][AG]-3'), a sequence present in many viral and cellular promoters. It binds to a Tax-responsive enhancer element in the long terminal repeat of HTLV-I.

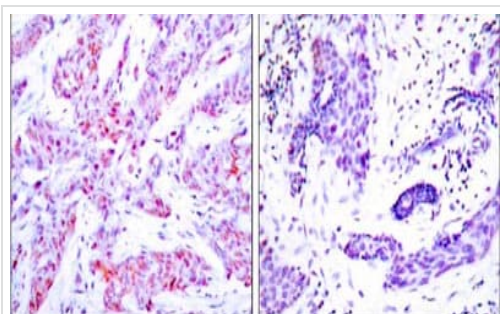
Sequence similarities

Belongs to the bZIP family.
Contains 1 bZIP domain.

Cellular localization

Cytoplasm. Cell membrane. Nucleus. Colocalizes with GABBR1 in hippocampal neuron dendritic membranes.

Images



Immunohistochemistry (Formalin/PFA-fixed paraffin-embedded sections) - Anti-ATF-4 antibody (ab31390)

ab31390 at a 1:50-1:100 dilution staining ATF-4 in human breast carcinoma tissue, using Immunohistochemistry, Paraffin Embedded Tissue.

Left image : Un-treated.

Right image : Antibody pre-incubated with synthesized peptide.

Please note: All products are "FOR RESEARCH USE ONLY. NOT FOR USE IN DIAGNOSTIC PROCEDURES"

Our Abpromise to you: Quality guaranteed and expert technical support

- Replacement or refund for products not performing as stated on the datasheet
- Valid for 12 months from date of delivery

- Response to your inquiry within 24 hours
- We provide support in Chinese, English, French, German, Japanese and Spanish
- Extensive multi-media technical resources to help you
- We investigate all quality concerns to ensure our products perform to the highest standards

If the product does not perform as described on this datasheet, we will offer a refund or replacement. For full details of the Abpromise, please visit <https://www.abcam.com/abpromise> or contact our technical team.

Terms and conditions

- Guarantee only valid for products bought direct from Abcam or one of our authorized distributors